



*Essential Validation Services*



**Nature's** FUSIONS  
ESSENTIAL OILS



**Sample:**

---

Client: | Nature's Fusions  
Sample: | Dragon's Breath (Protective)  
Batch # | NF-NF.DRAG-18-A  
CAS Number |  
Type: | Blend

---

**Conclusion:**

- No adulterants, diluents, or contaminants were detected via this method.
- This oil meets the expected profile for genuine oil of Dragon's Breath (Protective).

X

Validated By:



Essential Validation Services

747 SW 2nd Ave, Gainesville, FL 32601

Phone: 317-361-5044 E-mail: Adam@essentialvalidationservices.com

**Summary of Analyses**

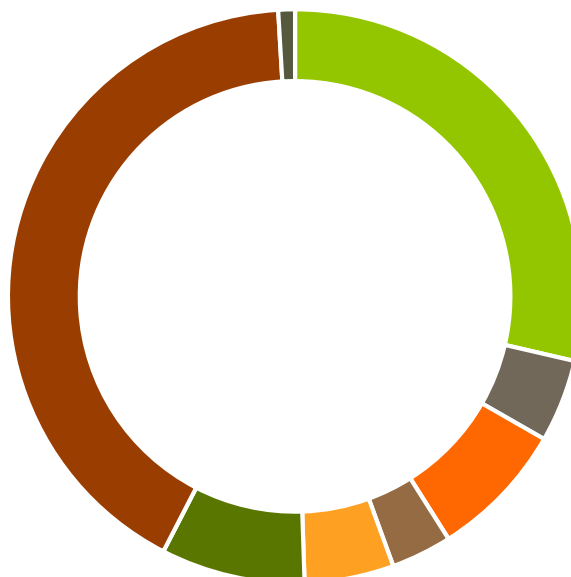
---

A fresh sample of Dragon's Breath (Protective) (10 uL in .5to.5 mL Hexane + ETOH) was prepared and analyzed via split injection GC/EI-MS.



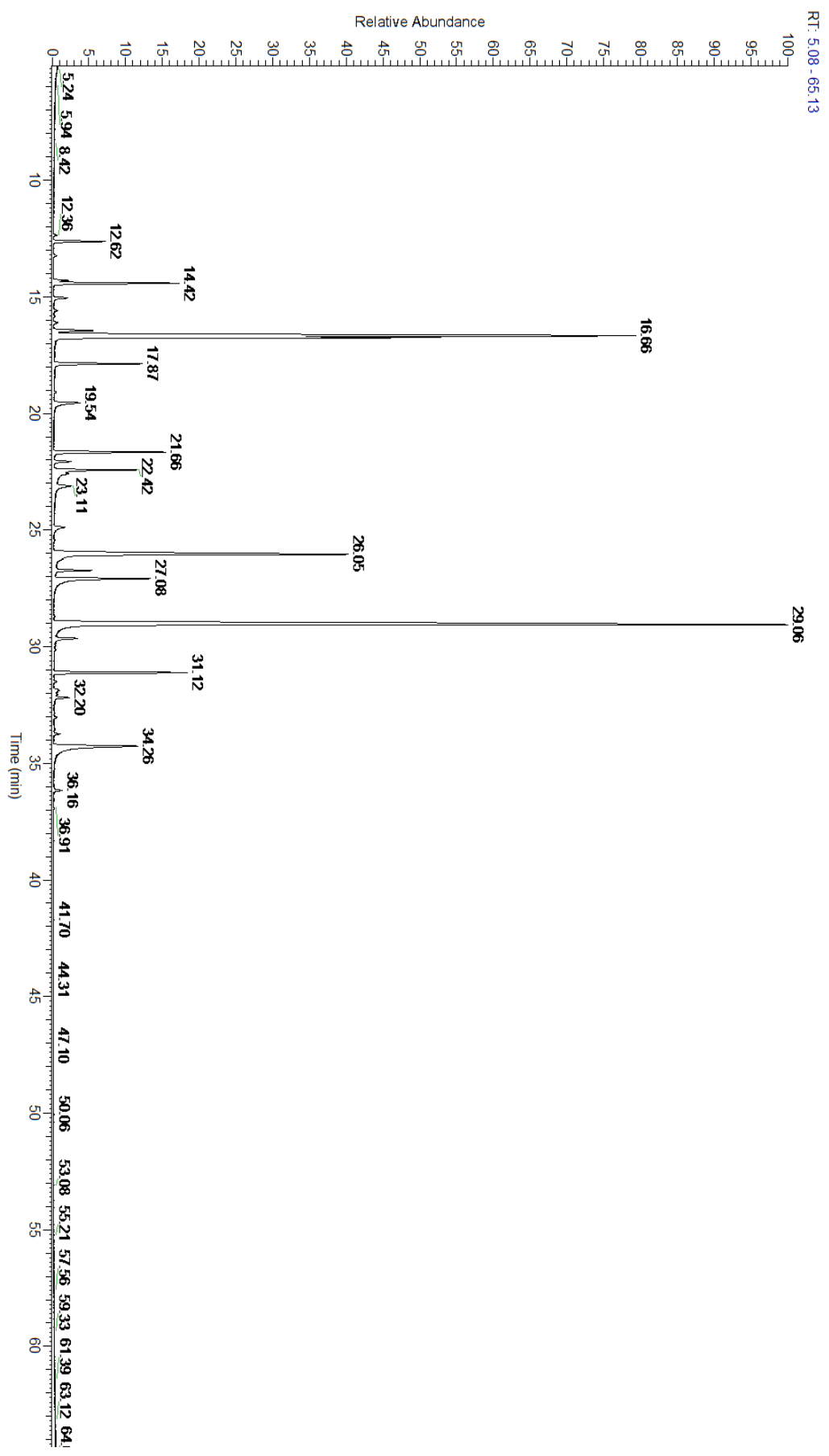
| Main Compounds     | Percentages |
|--------------------|-------------|
| Eugenol            | 29.58%      |
| Limonene           | 19.75%      |
| (E)-Cinnamaldehyde | 11.89%      |
| 1,8-Cineole        | 8.12%       |
| Eugenyl acetate    | 4.11%       |
| beta-Caryophyllene | 3.50%       |
| Carvacrol          | 3.23%       |
| beta-Pinene        | 3.17%       |
| Menthone           | 3.01%       |
| gamma-Terpinene    | 2.33%       |
| Menthol            | 2.12%       |
| alpha-Pinene       | 1.26%       |
| para-Cymene        | 1.11%       |

| Monoterpenes | Sesquiterpenes | Monoterpenols | Sesquiterpenols | Ketones |
|--------------|----------------|---------------|-----------------|---------|
| 28.62%       | 4.66%          | 7.74%         | 0.00%           | 3.42%   |
| Esters       | Ethers         | Aldehydes     | Phenols         | Other   |
| 5.03%        | 8.12%          | 0.00%         | 41.47%          | 0.94%   |



- Monoterpenes
- Sesquiterpenes
- Monoterpenols
- Sesquiterpenols
- Ketones
- Esters
- Ethers
- Phenols
- Other

ESSENTIAL VALIDATION SERVICES | 747 SW 2<sup>ND</sup> AVE GAINESVILLE, FLORIDA 32601 | 317-361-5044



ESSENTIAL VALIDATION SERVICES | 747 SW 2<sup>ND</sup> AVE GAINESVILLE, FLORIDA 32601 | 317-361-5044

