



Essential Validation Services



Nature's FUSIONS
ESSENTIAL OILS



Sample:

Client: | Nature's Fusions
Sample: | Earthly Calm (Anti-spasmodic)
Batch # | NF-NF.EART-18-A
CAS Number |
Type: | Blend

Conclusion:

- No adulterants, diluents, or contaminants were detected via this method.
- This oil meets the expected profile for genuine oil of Earthly Calm (Anti-spasmodic).



X *Adam Christen*

Validated By:

Essential Validation Services

747 SW 2nd Ave, Gainesville, FL 32601

Phone: 317-361-5044 E-mail: Adam@essentialvalidationservices.com

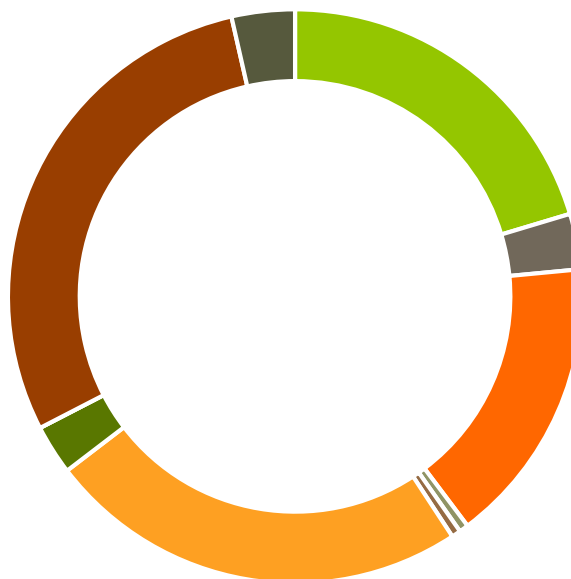
Summary of Analyses

A fresh sample of Earthly Calm (Anti-spasmodic) (10 uL in .5to.5 mL Hexane + ETOH) was prepared and analyzed via split injection GC/EI-MS.



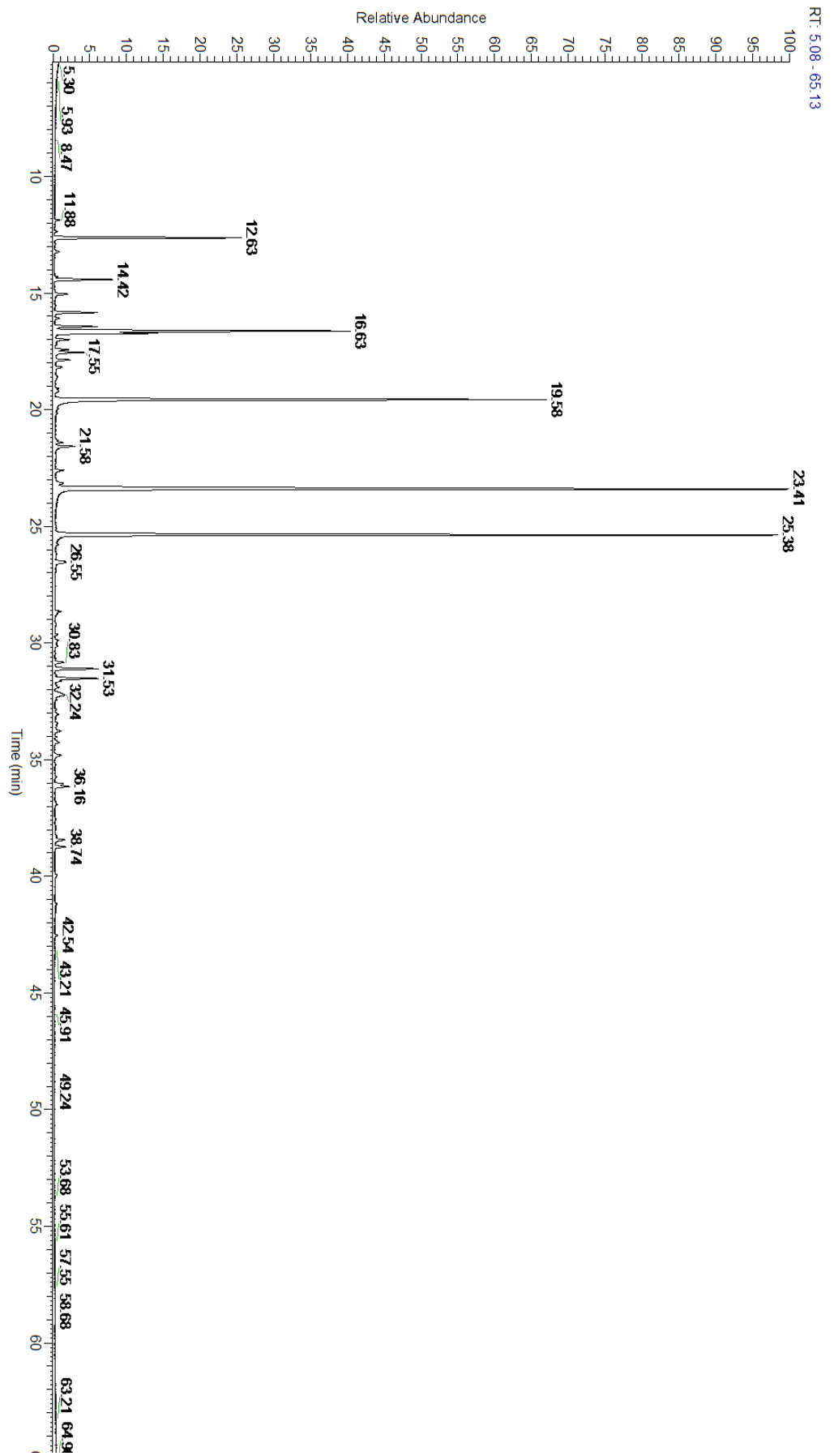
Main Compounds	Percentages
Methyl chavicol	29.02%
Linalyl acetate	22.21%
Linalool	15.75%
Limonene	9.24%
alpha-Pinene	5.33%
1,8-Cineole	2.63%
beta-Pinene	1.68%
beta-Gurjunene	1.36%
beta-Caryophyllene	1.33%
delta-3-Carene	1.20%
para-Cymene	1.19%
Isobutyl angelate	0.86%
Isoamyl tiglate	0.58%

Monoterpenes	Sesquiterpenes	Monoterpenols	Sesquiterpenols	Ketones
20.36%	3.13%	16.25%	0.52%	0.51%
Esters	Ethers	Aldehydes	Phenols	Other
23.84%	2.81%	0.00%	29.02%	3.56%



- Monoterpenes
- Sesquiterpenes
- Monoterpenols
- Sesquiterpenols
- Ketones
- Esters
- Ethers
- Phenols
- Other

ESSENTIAL VALIDATION SERVICES | 747 SW 2ND AVE GAINESVILLE, FLORIDA 32601 | 317-361-5044



ESSENTIAL VALIDATION SERVICES | 747 SW 2ND AVE GAINESVILLE, FLORIDA 32601 | 317-361-5044



ESSENTIAL VALIDATION SERVICES | 747 SW 2ND AVE GAINESVILLE, FLORIDA 32601 | 317-361-5044

Total Percentage		96.44%			
Peak Number	RT	Area %	Compound Name	RI	Chemical Family
1	11.88	0.10%	Isobutyl acetate	761.00	Aliphatic Ester
2	12.36	0.04%	alpha-Thujene	927.80	Monoterpene
3	12.63	5.33%	alpha-Pinene	936.10	Monoterpene
4	13.25	0.12%	Camphene	950.30	Monoterpene
5	14.31	0.06%	Sabinene	973.00	Monoterpene
6	14.42	1.68%	beta-Pinene	974.00	Monoterpene
7	15.05	0.38%	Myrcene	989.20	Monoterpene
8	15.84	1.20%	delta-3-Carene	1008.00	Monoterpene
9	16.09	0.09%	Isoamyl isobutyrate	1007.00	Aliphatic Ester
10	16.44	1.19%	para-Cymene	1024.30	Monoterpene
11	16.63	9.24%	Limonene	1029.50	Monoterpene
12	16.72	2.63%	1,8-Cineole	1031.80	Monoterpene Ether
13	16.99	0.37%	(Z)-beta-Ocimene	1037.80	Monoterpene
14	17.43	0.36%	(E)-beta-Ocimene	1047.70	Monoterpene
15	17.55	0.86%	Isobutyl angelate	1053.75	Aliphatic Ester
16	17.87	0.39%	gamma-Terpinene	1054.00	Monoterpene
17	18.18	0.19%	Artemisia ketone	1057.00	Monoterpene Ketone
18	19.58	15.75%	Linalool	1099.00	Monoterpenol
19	21.58	0.58%	Isoamyl tiglate	1152.50	Aliphatic Ester
20	22.60	0.24%	Terpinen-4-ol	1180.57	Monoterpenol
21	23.15	0.26%	alpha-Terpineol	1191.71	Monoterpenol
22	23.41	29.02%	Methyl chavicol	1193.40	Phenylpropanoid
23	25.38	22.21%	Linalyl acetate	1263.80	Monoterpene Ester
24	28.64	0.18%	alpha-Terpinyl acetate	1353.00	Monoterpene Ether
25	30.83	0.27%	alpha-Gurjunene	1412.00	Sesquiterpene
26	31.11	1.33%	beta-Caryophyllene	1427.14	Sesquiterpene
27	31.53	1.36%	beta-Gurjunene	1433.00	Sesquiterpene
28	34.27	0.17%	gamma-Cadinene	1515.29	Sesquiterpene
29	36.16	0.52%	Longipinanol	1567.50	Sesquiterpenol
30	38.74	0.32%	Valeranone	1671.50	Sesquiterpene Ketone