



Essential Validation Services



Nature's FUSIONS
ESSENTIAL OILS

Sample:

Client: | Nature's Fusions
Sample: | Eternal Flame (Alertness / Memory)
Batch # | NF-NF.ETER-18-A
CAS Number |
Type: | Blend

Conclusion:

- No adulterants, diluents, or contaminants were detected via this method.
- This oil meets the expected profile for genuine oil of Eternal Flame (Alertness / Memory).

X



Validated By:



Essential Validation Services

747 SW 2nd Ave, Gainesville, FL 32601

Phone: 317-361-5044 E-mail: Adam@essentialvalidationservices.com

Summary of Analyses

A fresh sample of Eternal Flame (Alertness / Memory) (10 uL in .5to.5 mL Hexane + ETOH) was prepared and analyzed via split injection GC/EI-MS.



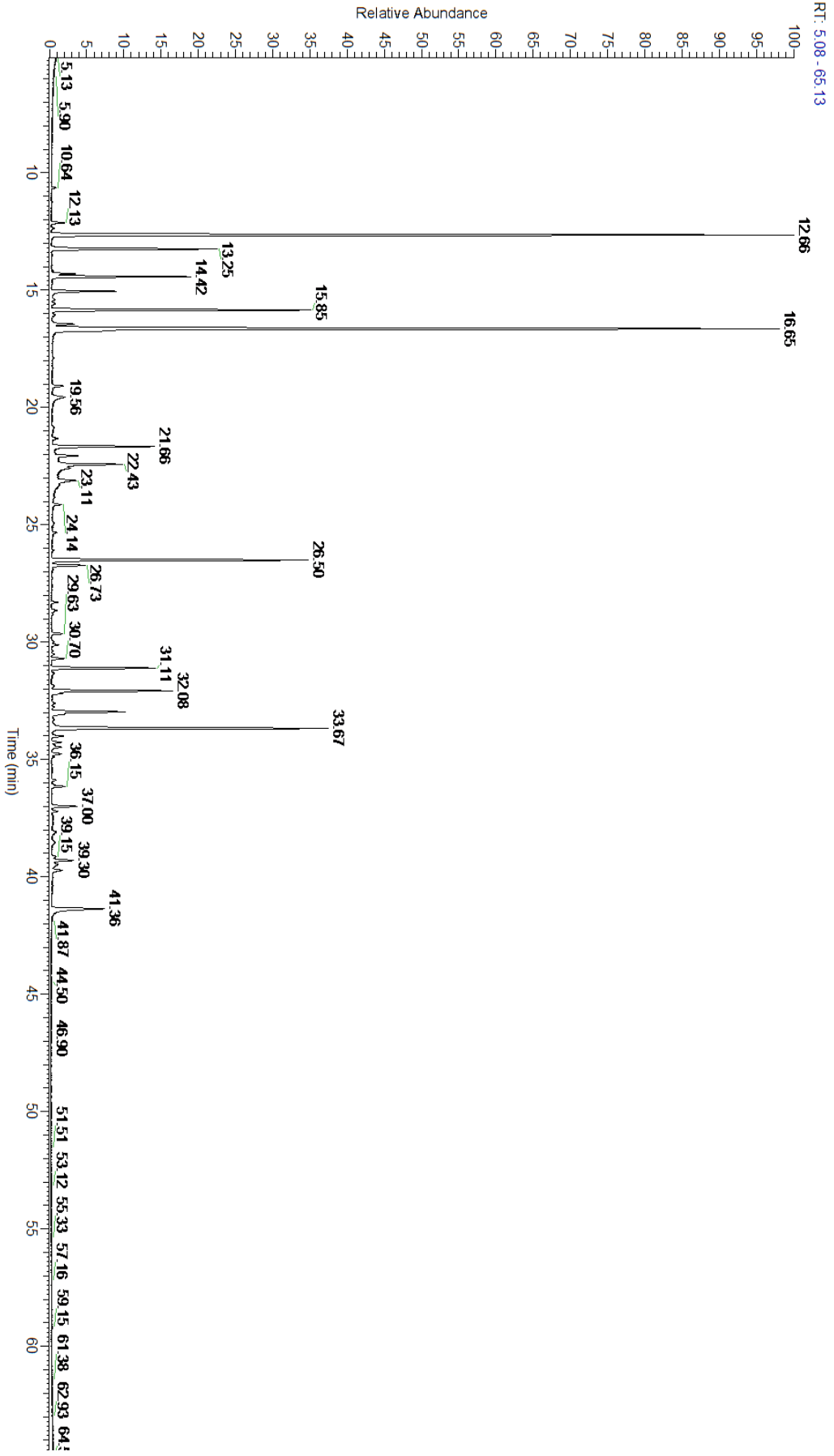
Main Compounds	Percentages
Limonene (Co-Eluting)	22.63%
alpha-Pinene	19.58%
beta-Himachalene	7.76%
delta-3-Carene	6.72%
Bornyl acetate	6.69%
Camphene	4.33%
beta-Pinene	3.63%
Aromadendrene	3.31%
Menthone	2.86%
beta-Caryophyllene	2.79%
Menthol	2.14%
Zerumbone	2.13%
allo-Aromadendrene	2.08%

Monoterpenes	Sesquiterpenes	Monoterpenols	Sesquiterpenols	Ketones
60.43%	17.61%	2.85%	0.36%	4.54%
Esters	Ethers	Aldehydes	Phenols	Other
7.72%	0.84%	0.00%	0.00%	5.65%



- Monoterpenes
- Sesquiterpenes
- Monoterpenols
- Sesquiterpenols
- Ketones
- Esters
- Ethers
- Phenols
- Other

ESSENTIAL VALIDATION SERVICES | 747 SW 2ND AVE GAINESVILLE, FLORIDA 32601 | 317-361-5044



ESSENTIAL VALIDATION SERVICES | 747 SW 2ND AVE GAINESVILLE, FLORIDA 32601 | 317-361-5044



Total Percentage		94.44%			
Peak Number	RT	Area %	Compound Name	RI	Chemical Family
1	10.64	0.08%	Santene	884.00	Normonoterpene
2	12.13	0.31%	Tricyclene	923.00	Monoterpene
3	12.37	0.04%	alpha-Thujene	927.80	Monoterpene
4	12.66	19.58%	alpha-Pinene	936.10	Monoterpene
5	13.25	4.33%	Camphene	950.30	Monoterpene
6	14.31	0.56%	Sabinene	973.00	Monoterpene
7	14.42	3.63%	beta-Pinene	974.00	Monoterpene
8	15.05	1.68%	Myrcene	989.20	Monoterpene
9	15.85	6.72%	delta-3-Carene	1008.00	Monoterpene
10	16.05	0.06%	alpha-Terpinene	1014.00	Monoterpene
11	16.45	0.60%	para-Cymene	1024.30	Monoterpene
12	16.65	22.63%	Limonene	1029.50	Monoterpene
13	16.67	Co-Eluting	1,8-Cineole	1031.80	Monoterpene Ether
14	19.09	0.29%	Terpinolene	1092.10	Monoterpene
15	21.66	2.86%	Menthone	1155.00	Monoterpene Ketone
16	22.06	0.68%	Isomenthone	1164.33	Monoterpene Ketone
17	22.42	2.14%	Menthol	1177.40	Monoterpenol
18	23.11	0.72%	alpha-Terpineol	1191.71	Monoterpenol
19	24.14	0.18%	Fenchyl acetate	1222.00	Monoterpene Ester
20	26.50	6.69%	Bornyl acetate	1288.29	Monoterpene Ester
21	26.73	0.85%	Menthyl acetate	1297.00	Monoterpene Ester
22	28.30	0.13%	delta-Elemene	1335.83	Sesquiterpene
23	28.64	0.17%	alpha-Terpinyl acetate	1353.00	Monoterpene Ether
24	29.63	0.27%	alpha-Copaene	1379.00	Sesquiterpene
25	31.11	2.79%	beta-Caryophyllene	1427.14	Sesquiterpene
26	32.08	3.31%	Aromadendrene	1449.80	Sesquiterpene
27	32.18	0.23%	alpha-Himachalene	1448.40	Sesquiterpene
28	32.98	2.08%	allo-Aromadendrene	1471.00	Sesquiterpene
29	33.07	0.24%	gamma-Murolene	1478.86	Sesquiterpene
30	33.67	7.76%	beta-Himachalene	1497.75	Sesquiterpene
31	34.00	0.28%	alpha-Dehydro-ar-himachalene	1516.00	Sesquiterpene
32	34.48	0.25%	gamma-Dehydro-ar-Himachalene	1529.75	Sesquiterpene
33	34.76	0.27%	gamma-Vetivenene	1532.00	Sesquiterpene
34	36.15	0.36%	(E)-Nerolidol	1567.00	Sesquiterpenol
35	37.00	0.67%	beta-Himachalene oxide	1595.95	Sesquiterpene Ether
36	39.15	0.08%	(Z)-gamma-Atlantone	1683.00	Sesquiterpene Ketone
37	39.30	0.64%	Deodarone	1693.50	Sesquiterpene Ketone
38	39.72	0.28%	(Z)-alpha-Atlantone	1707.50	Sesquiterpene Ketone
39	41.36	2.13%	Zerumbone		