



*Essential Validation Services*



**Nature's** FUSIONS  
ESSENTIAL OILS



**Sample:**

---

Client: | Nature's Fusions  
Sample: | Fire & Ice (Muscle)  
Batch # | NF-NF.FIRE-18-A  
CAS Number |  
Type: | Blend

---

**Conclusion:**

- No adulterants, diluents, or contaminants were detected via this method.
- This oil meets the expected profile for genuine oil of Fire & Ice (Muscle).

X

Validated By:



Essential Validation Services

747 SW 2nd Ave, Gainesville, FL 32601

Phone: 317-361-5044 E-mail: Adam@essentialvalidationservices.com

**Summary of Analyses**

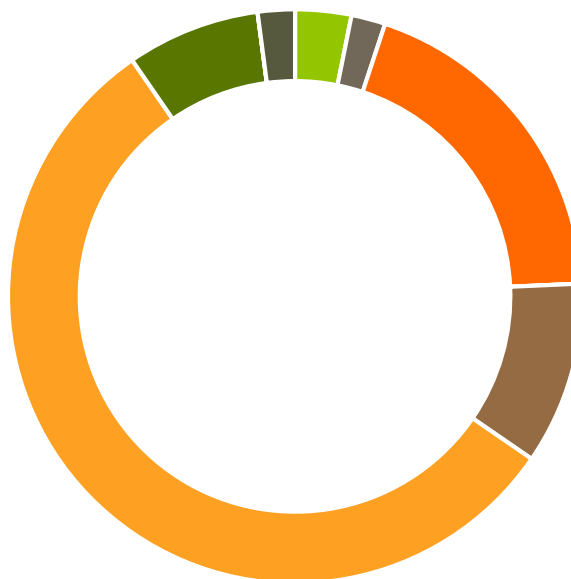
---

A fresh sample of Fire & Ice (Muscle) (10 uL in .5to.5 mL Hexane + ETOH) was prepared and analyzed via split injection GC/EI-MS.



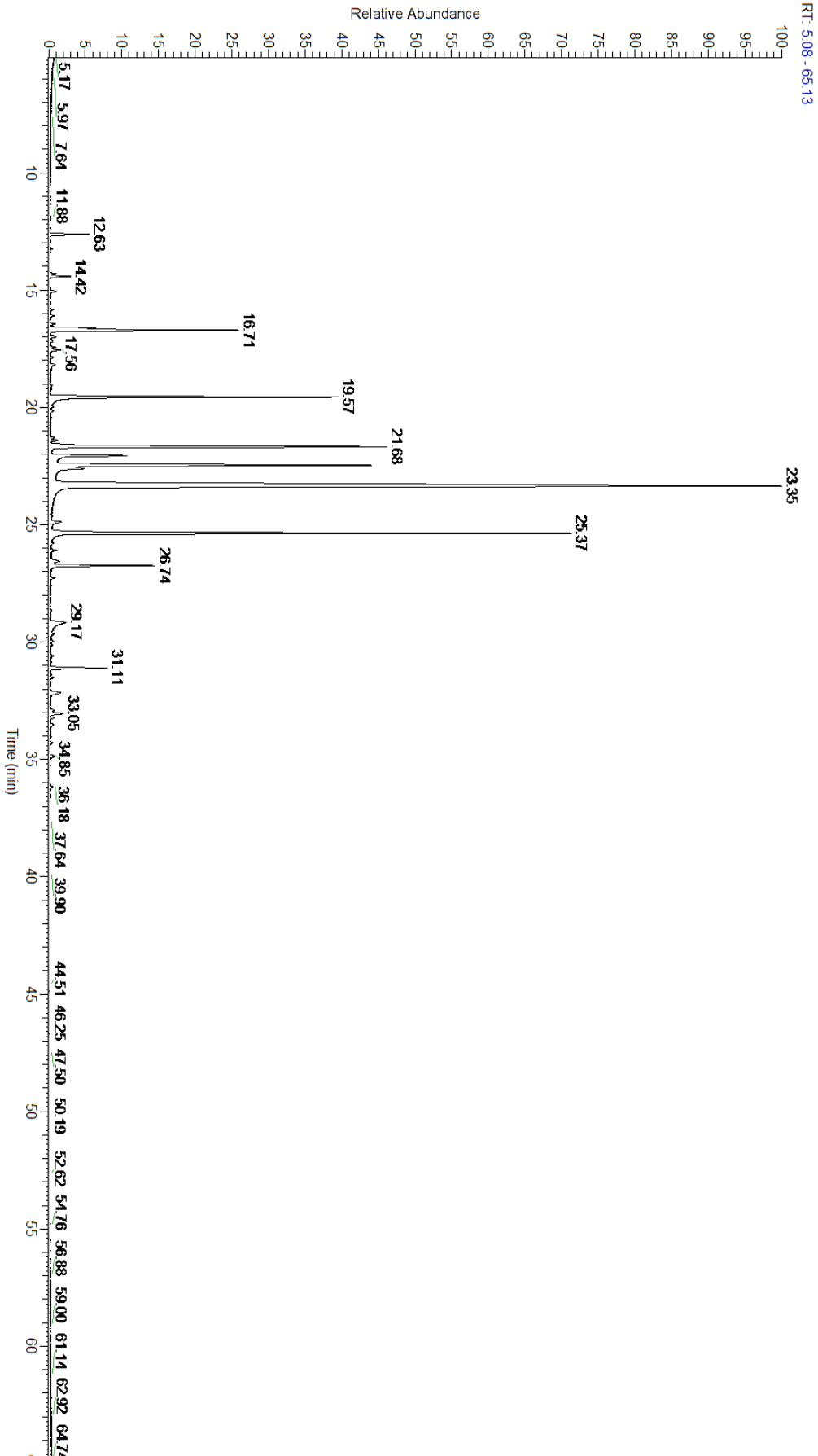
Main Compounds	Percentages
Methyl Salicylate (Co-Eluting)	37.68%
Linalyl acetate	14.08%
Menthol	10.04%
Menthone	9.85%
Linalool	8.24%
1,8-Cineole	5.02%
Menthyl acetate	2.65%
Menthofuran (Co-Eluting)	2.50%
beta-Caryophyllene	1.53%
alpha-Pinene	0.98%
Limonene (Co-Eluting)	0.96%
Terpinen-4-ol	0.93%
Neryl acetate	0.53%

Monoterpenes	Sesquiterpenes	Monoterpenols	Sesquiterpenols	Ketones
3.16%	1.92%	19.21%	0.00%	10.29%
Esters	Ethers	Aldehydes	Phenols	Other
55.81%	7.52%	0.00%	0.00%	2.09%



- Monoterpenes
- Sesquiterpenes
- Monoterpenols
- Sesquiterpenols
- Ketones
- Esters
- Ethers
- Phenols
- Other

ESSENTIAL VALIDATION SERVICES | 747 SW 2<sup>ND</sup> AVE GAINESVILLE, FLORIDA 32601 | 317-361-5044



ESSENTIAL VALIDATION SERVICES | 747 SW 2<sup>ND</sup> AVE GAINESVILLE, FLORIDA 32601 | 317-361-5044



Total Percentage 97.91%

Peak Number	RT	Area %	Compound Name	RI	Chemical Family
1	12.63	0.98%	alpha-Pinene	936.10	Monoterpene
2	14.30	0.13%	Sabinene	973.00	Monoterpene
3	14.42	0.51%	beta-Pinene	974.00	Monoterpene
4	15.05	0.14%	Myrcene	989.20	Monoterpene
5	15.85	0.05%	delta-3-Carene	1008.00	Monoterpene
6	16.09	0.08%	ortho-Cymene	1021.33	Monoterpene
7	16.44	0.10%	para-Cymene	1024.30	Monoterpene
8	16.62	0.96%	Limonene	1029.50	Monoterpene
9	16.63	Co-Eluting	beta-Phellandrene	1030.00	Monoterpene
10	16.71	5.02%	1,8-Cineole	1031.80	Monoterpene Ether
11	17.00	0.11%	(Z)-beta-Ocimene	1037.80	Monoterpene
12	17.44	0.10%	(E)-beta-Ocimene	1047.70	Monoterpene
13	17.56	0.26%	Isobutyl angelate	1053.75	Aliphatic Ester
14	18.19	0.11%	Artemisia ketone	1057.00	Monoterpene Ketone
15	19.57	8.24%	Linalool	1099.00	Monoterpenol
16	21.42	0.16%	Isoamyl tiglate	1152.50	Aliphatic Ester
17	21.68	9.85%	Menthone	1155.00	Monoterpene Ketone
18	22.06	2.50%	Menthofuran	1164.00	Monoterpene Ether
19	22.07	Co-Eluting	Isomenthone	1164.33	Monoterpene Ketone
20	22.07	Co-Eluting	Neomenthol	1165.00	Monoterpenol
21	22.47	10.04%	Menthol	1177.40	Monoterpenol
22	22.61	0.93%	Terpinen-4-ol	1180.57	Monoterpenol
23	23.35	37.68%	Methyl Salicylate	1192.29	Phenolic Ester
24	23.36	Co-Eluting	Methyl Chavicol	1193.40	Phenylpropanoid
25	24.88	0.33%	Pulegone	1244.43	Monoterpene Ketone
26	25.37	14.08%	Linalyl acetate	1263.80	Monoterpene Ester
27	26.09	0.13%	Neomenthyl acetate	1275.00	Monoterpene Ester
28	26.56	0.32%	Neryl formate	1280.50	Monoterpene Ester
29	26.74	2.65%	Menthyl acetate	1297.00	Monoterpene Ester
30	29.20	0.53%	Neryl acetate	1362.90	Monoterpene Ester
31	31.11	1.53%	beta-Caryophyllene	1427.14	Sesquiterpene
32	33.05	0.39%	cis-Muurola-4(14),5-diene	1465.75	Sesquiterpene

ESSENTIAL VALIDATION SERVICES | 747 SW 2<sup>ND</sup> AVE GAINESVILLE, FLORIDA 32601 | 317-361-5044