



*Essential Validation Services*



**Nature's** FUSIONS  
ESSENTIAL OILS



**Sample:**

---

Client: | Nature's Fusions  
Sample: | Holiday Cheer (Spice Blend)  
Batch # | NF-NF.GREN-18-A  
CAS Number |  
Type: | Blend

---

**Conclusion:**

- No adulterants, diluents, or contaminants were detected via this method.
- This oil meets the expected profile for genuine oil of Holiday Cheer (Spice Blend).

X 

---

Validated By:



Essential Validation Services

747 SW 2nd Ave, Gainesville, FL 32601

Phone: 317-361-5044 E-mail: Adam@essentialvalidationservices.com

**Summary of Analyses**

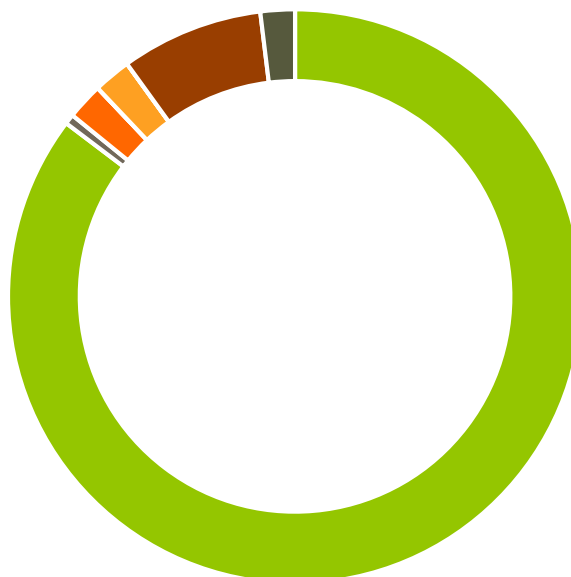
---

A fresh sample of Holiday Cheer (Spice Blend) (10 uL in .5to.5 mL Hexane + ETOH) was prepared and analyzed via split injection GC/EI-MS.



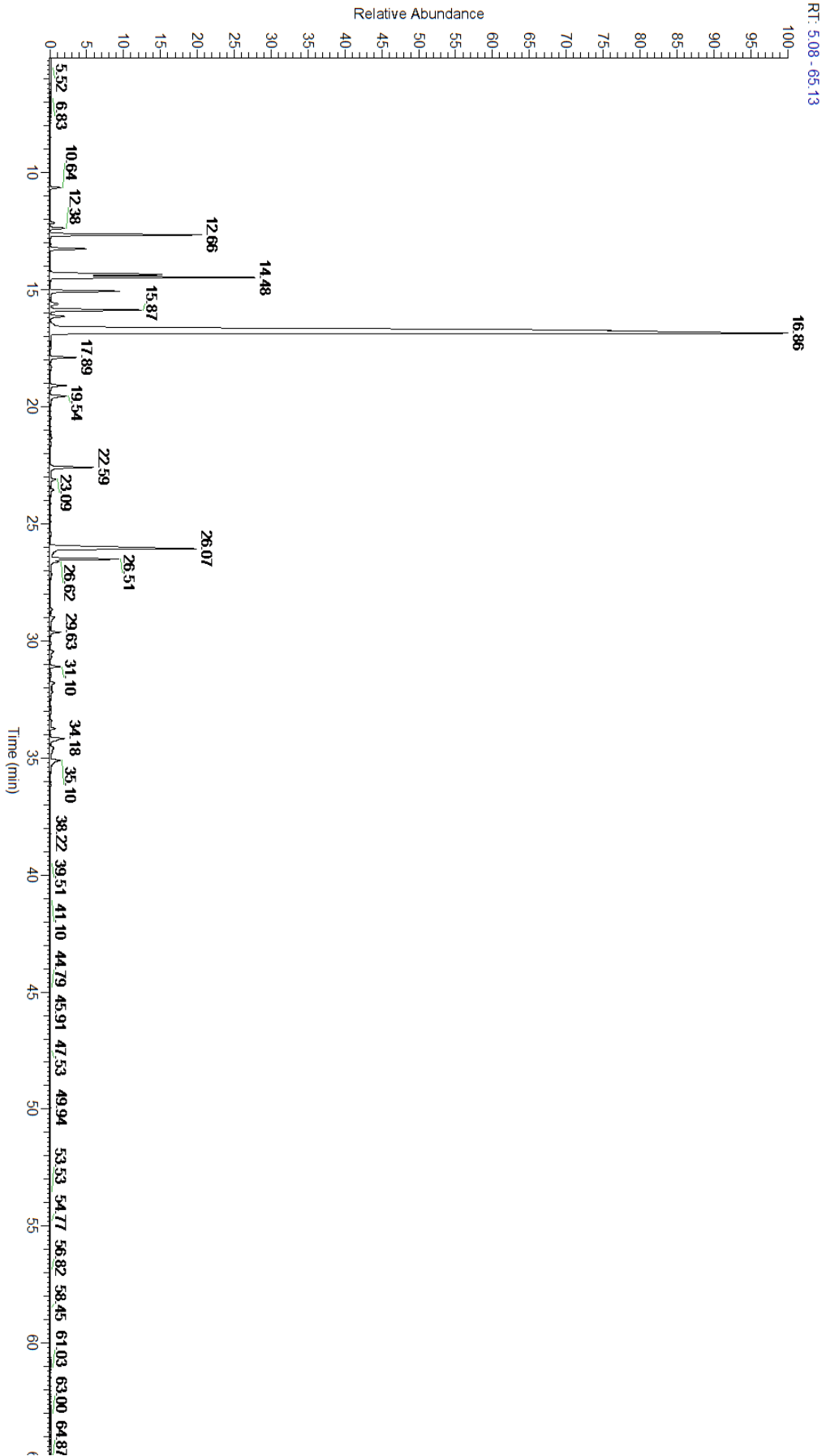
Main Compounds	Percentages
Limonene (Co-Eluting)	61.80%
(E)-Cinnamaldehyde	6.91%
beta-Pinene	6.32%
alpha-Pinene	4.44%
Sabinene	4.07%
delta-3-Carene	2.92%
Myrcene	2.10%
Bornyl acetate	1.93%
Terpinen-4-ol	1.41%
Camphene	1.08%
gamma-Terpinene	0.77%
Myristicin	0.64%
Linalool	0.57%

Monoterpenes	Sesquiterpenes	Monoterpenols	Sesquiterpenols	Ketones
85.31%	0.56%	2.06%	0.00%	0.00%
Esters	Ethers	Aldehydes	Phenols	Other
2.11%	0.00%	0.00%	8.02%	1.94%



- Monoterpenes
- Sesquiterpenes
- Monoterpenols
- Sesquiterpenols
- Ketones
- Esters
- Ethers
- Phenols
- Other

ESSENTIAL VALIDATION SERVICES | 747 SW 2<sup>ND</sup> AVE GAINESVILLE, FLORIDA 32601 | 317-361-5044



ESSENTIAL VALIDATION SERVICES | 747 SW 2ND AVE GAINESVILLE, FLORIDA 32601 | 317-361-5044



Total Percentage		98.35%			
Peak Number	RT	Area %	Compound Name	RI	Chemical Family
1	10.64	0.29%	Santene	884.00	Normonoterpene
2	12.14	0.12%	Tricyclene	923.00	Monoterpene
3	12.38	0.41%	alpha-Thujene	927.80	Monoterpene
4	12.66	4.44%	alpha-Pinene	936.10	Monoterpene
5	13.25	1.08%	Camphene	950.30	Monoterpene
6	14.34	4.07%	Sabinene	973.00	Monoterpene
7	14.48	6.32%	beta-Pinene	974.00	Monoterpene
8	15.07	2.10%	Myrcene	989.20	Monoterpene
9	15.61	0.31%	alpha-Phellandrene	1002.00	Monoterpene
10	15.87	2.92%	delta-3-Carene	1008.00	Monoterpene
11	16.14	0.48%	alpha-Terpinene	1014.00	Monoterpene
12	16.86	61.80%	Limonene	1029.50	Monoterpene
13	16.87	Co-Eluting	beta-Phellandrene	1030.00	Monoterpene
14	16.87	Co-Eluting	para-Cymene	1024.30	Monoterpene
15	17.89	0.77%	gamma-Terpinene	1054.00	Monoterpene
16	19.09	0.49%	Terpinolene	1092.10	Monoterpene
17	19.54	0.57%	Linalool	1099.00	Monoterpenol
18	22.59	1.41%	Terpinen-4-ol	1180.57	Monoterpenol
19	23.09	0.08%	alpha-Terpineol	1191.71	Monoterpenol
20	26.07	6.91%	(E)-Cinnamaldehyde	1267.67	Phenylpropanoid
21	26.51	1.93%	Bornyl acetate	1288.29	Monoterpene Ester
22	26.62	0.22%	Safrole	1290.14	Phenylpropanoid
23	29.02	0.10%	Eugenol	1365.89	Phenylpropanoid
24	29.63	0.28%	alpha-Copaene	1379.00	Sesquiterpene
25	30.45	0.15%	Methyl eugenol	1407.27	Phenylpropanoid
26	31.10	0.28%	beta-Caryophyllene	1427.14	Sesquiterpene
27	31.79	0.18%	(E)-Cinnamyl acetate	1443.50	Phenylpropanoid Ester
28	34.18	0.64%	Myristicin	1522.86	Phenylpropanoid
29	34.59	0.11%	Methoxy cinnamaldehyde		

ESSENTIAL VALIDATION SERVICES | 747 SW 2<sup>ND</sup> AVE GAINESVILLE, FLORIDA 32601 | 317-361-5044