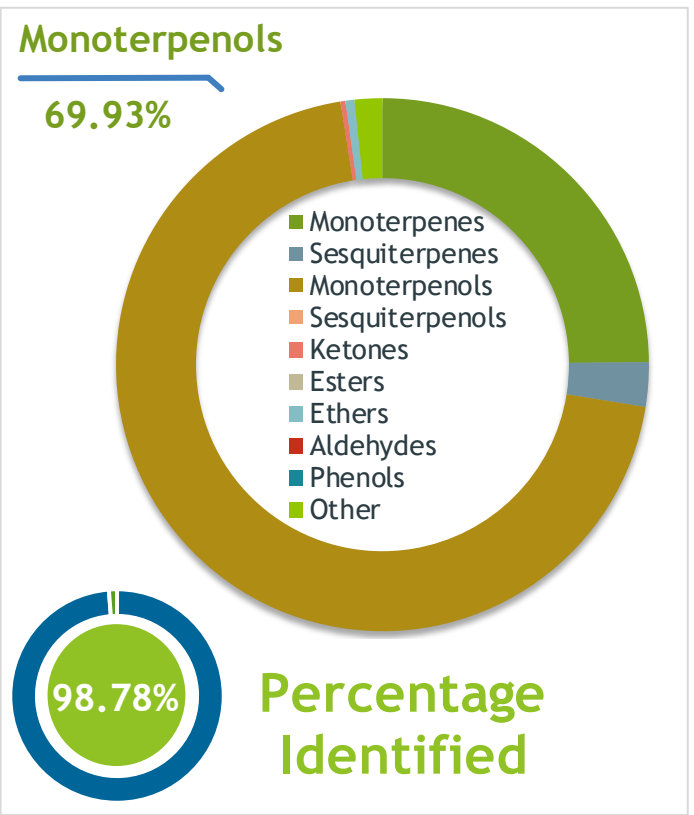


Client  **Source** 

Oregano (*Origanum vulgare*)
NF-OREG-19-A

Sample Oregano (*Origanum vulgare*)
Batch #:..... NF-OREG-19-A
Type:..... Essential Oil
CAS Number:... 84012-24-8
Nature's Fusions



Client  **Website** 

Primary
61.98% Carvacrol
9.54% para-Cymene
7.84% gamma-Terpinene

Result 

Conclusion No adulterants, diluents, or contaminants were detected via this method. This oil meets the expected profile for genuine essential oil of Oregano (*Origanum vulgare*)
Internal Number: | EVS-2906


Essential Validation Services
747 SW 2nd Ave IMB 12 Suite 306
Gainesville, FL 32601
317.361.5044 |
<https://essentialvalidationservices.com/>
adam@essentialvalidationservices.com


Monoterpenes	24.85%	24.85%
Sesquiterpenes	2.69%	2.69%
Monoterpenols	69.93%	69.93%
Sesquiterpenols	0.00%	0.00%
Ketones	0.30%	0.30%
Esters	0.00%	0.00%
Ethers	0.55%	0.55%
Aldehydes	0.00%	0.00%
Phenols	0.00%	0.00%
Other	1.68%	1.68%

ESSENTIAL VALIDATION SERVICES | 747 SW 2ND AVE GAINESVILLE, FLORIDA 32601 | 317-361-5044

Client


Nature's FUSIONS
 ESSENTIAL OILS

Source



Oregano (Origanum vulgare)
 NF-OREG-19-A

Total Percentage		98.78%			
Number	RT	Area %	Compound Name	RI	Chemical Family
1	12.61	1.45%	alpha-Thujene	927.80	Monoterpene
2	12.89	1.13%	alpha-Pinene	936.10	Monoterpene
3	13.51	0.10%	Camphene	950.30	Monoterpene
4	14.70	0.09%	beta-Pinene	974.00	Monoterpene
5	14.79	0.41%	1-Octen-3-ol	980.00	Aliphatic Alcohol
6	15.09	0.17%	Octan-3-one	981.00	Aliphatic Ketone
7	15.29	1.97%	Myrcene	989.20	Monoterpene
8	15.48	0.05%	3-Octanol	992.00	Aliphatic Alcohol
9	15.85	0.20%	alpha-Phellandrene	1002.00	Monoterpene
10	16.11	0.05%	delta-3-Carene	1008.00	Monoterpene
11	16.37	1.91%	alpha-Terpinene	1014.00	Monoterpene
12	16.72	9.54%	para-Cymene	1024.30	Monoterpene
13	16.90	0.42%	Limonene	1029.50	Monoterpene
14	17.01	0.05%	1,8-Cineole	1031.80	Monoterpene Ether
15	17.24	0.01%	(Z)-beta-Ocimene	1037.80	Monoterpene
16	17.69	0.03%	(E)-beta-Ocimene	1047.70	Monoterpene
17	18.16	7.84%	gamma-Terpinene	1054.00	Monoterpene
18	18.48	0.17%	trans-Sabinene hydrate	1072.00	Monoterpenol
19	19.35	0.11%	Terpinolene	1092.10	Monoterpene
20	19.75	0.15%	Linalool	1099.00	Monoterpenol
21	22.43	0.26%	Borneol	1168.71	Monoterpenol
22	22.84	0.99%	Terpinen-4-ol	1180.57	Monoterpenol
23	23.34	0.03%	para-Cymen-8-ol	1185.25	Monoterpenol
24	23.49	0.13%	alpha-Terpineol	1191.71	Monoterpenol
25	23.72	0.06%	cis-Dihydrocarvone	1197.57	Monoterpene Ketone
26	25.21	0.03%	Pulegone	1244.43	Monoterpene Ketone
27	25.56	0.04%	Carvone	1248.14	Monoterpene Ketone
28	26.90	6.22%	Thymol	1288.15	Monoterpenol
29	27.48	61.98%	Carvacrol	1304.40	Monoterpenol
30	31.39	2.18%	beta-Caryophyllene	1427.14	Sesquiterpene
31	32.46	0.15%	alpha-Humulene	1461.43	Sesquiterpene
32	33.99	0.33%	beta-Bisabolene	1509.86	Sesquiterpene
33	34.50	0.03%	delta-Cadinene	1524.14	Sesquiterpene
34	36.41	0.48%	Caryophyllene oxide	1594.86	Sesquiterpene Ether
35	37.17	0.02%	Humulene epoxide II	1606.43	Sesquiterpene Ether

 ESSENTIAL VALIDATION SERVICES | 747 SW 2ND AVE GAINESVILLE, FLORIDA 32601 | 317-361-5044

