



## *Essential Validation Services*



### Sample:

---

Client: | Nature's Fusions  
Sample: | Sandalwood (Santalum Album)  
Batch # | 11130-A14  
CAS Number | 8006-87-9  
Type: | Essential Oil

---

### Conclusion:

- No adulterants, diluents, or contaminants were detected via this method.



X 

Validated By:

Essential Validation Services

747 SW 2nd Ave, Gainesville, FL 32601

Phone: 317-361-5044 E-mail: [Adam@essentialvalidationservices.com](mailto:Adam@essentialvalidationservices.com)

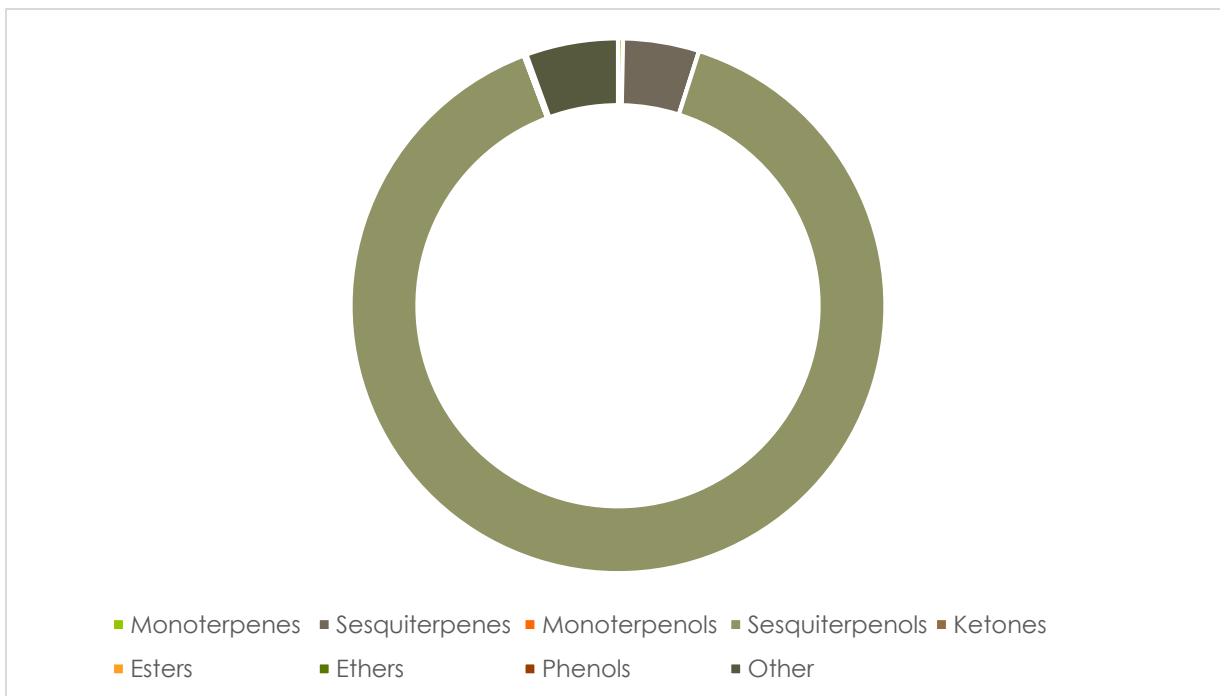
### Summary of Analyses

---

A fresh sample of Sandalwood (Santalum Album) Essential Oil (10 uL in .5to.5 mL Hexane + ETOH) was prepared and analyzed via split injection GC/EI-MS.

Main Compounds	Percentages
cis-alpha-Santalol	44.52%
cis-beta-Santalol	23.58%
(Z)-trans-alpha-Bergamo	6.94%
epi-beta-bisabolol	6.68%
Unknown Sandal	2.73%
trans-beta-Santalol	2.47%
Unknown Sandal	1.54%
beta-Bisabolol	1.47%
beta-Santalene	1.46%
beta-Bisabolol	1.38%
trans-alpha-Santalol	1.25%
epi-beta-Santalene	0.93%
alpha-Santalene	0.75%

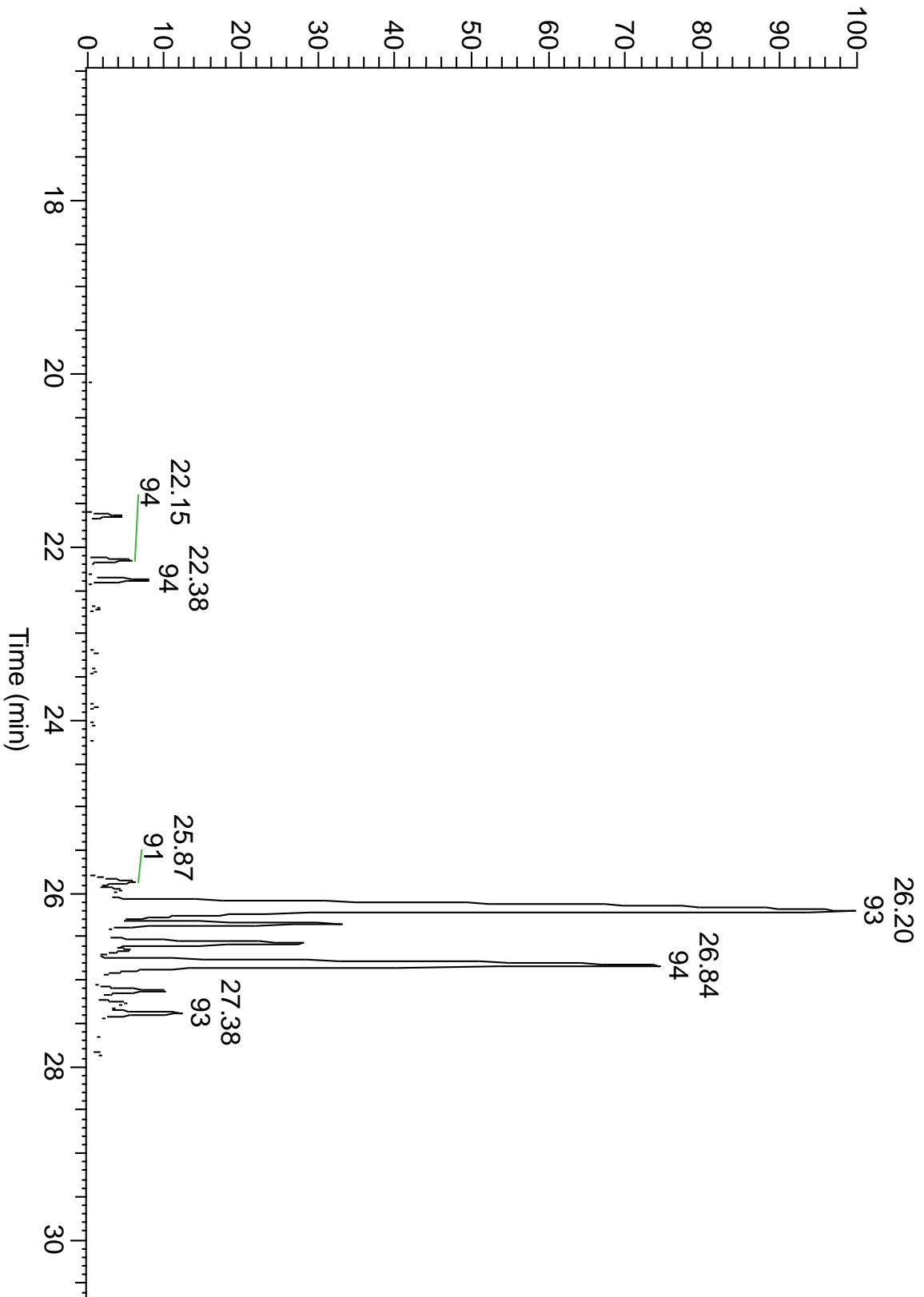
Monoterpenes	Sesquiterpenes	Monoterpenols	Sesquiterpenols	Ketones
0.30%	4.59%	0.00%	89.04%	0.00%
Esters	Ethers	Aldehydes	Phenols	Other
0.00%	0.17%	0.00%	0.00%	5.54%



ESSENTIAL VALIDATION SERVICES | 747 SW 2<sup>ND</sup> AVE GAINESVILLE, FLORIDA 32601 | 317-361-5044



RT: 16.46 - 30.83



ESSENTIAL VALIDATION SERVICES | 747 SW 2<sup>ND</sup> AVE GAINESVILLE, FLORIDA 32601 | 317-361-5044

Total Percentage	99.64%				
Peak Number	RT	Area %	Compound Name	RI	Chemical Family
1	9.34	0.04%	Santene	891.33	Monoterpenes
2	20.91	0.07%	7-epi-Sesquithujene	1398.00	Sesquiterpenes
3	21.64	0.75%	alpha-Santalene	1426.50	Sesquiterpenes
4	21.90	0.12%	trans-alpha-Bergamotene	1435.00	Sesquiterpenes
5	21.94	0.10%	Sesquithujene	1435.10	Sesquiterpenes
6	22.15	0.93%	epi-beta-Santalene	1450.25	Sesquiterpenes
7	22.38	1.46%	beta-Santalene	1464.00	Sesquiterpenes
8	22.60	0.18%	gamma-Curcumene	1476.00	Sesquiterpenes
9	22.71	0.38%	ar-Curcumene	1482.71	Sesquiterpenes
10	23.08	0.10%	beta-Himachalene	1497.75	Sesquiterpenes
11	23.21	0.25%	beta-Bisabolene	1509.86	Sesquiterpenes
12	23.32	0.05%	Santalol Isomer	#N/A	#N/A
13	23.42	0.26%	beta-Curcumene	1520.00	Monoterpenes
14	23.84	0.25%	beta-Sesquiphellandrene	1524.57	Sesquiterpenes
15	24.04	0.17%	Dendrolasin	1574.00	Ethers
16	24.22	0.08%	Teresantalol	1579.30	Sesquiterpenols
17	24.71	0.24%	Unknown Sandal	#N/A	#N/A
18	24.91	0.07%	Unknown Sandal	#N/A	#N/A
19	25.01	0.14%	Unknown Sandal	#N/A	#N/A
20	25.32	0.09%	alpha-Acorenol	1629.50	Sesquiterpenols
21	25.49	0.08%	beta-Acorenol	1641.00	Sesquiterpenols
22	25.87	1.47%	beta-Bisabolol	1670.00	Sesquiterpenols
23	25.96	1.38%	beta-Bisabolol	1670.00	Sesquiterpenols
24	26.20	44.52%	cis-alpha-Santalol	1676.50	Sesquiterpenols
25	26.35	6.68%	epi-beta-bisabolol	1684.86	Sesquiterpenols
26	26.58	6.94%	(Z)-trans-alpha-Bergamotol	1693.00	Sesquiterpenols
27	26.65	1.25%	trans-alpha-Santalol	1695.00	Sesquiterpenols
28	26.84	23.58%	cis-beta-Santalol	1713.75	Sesquiterpenols
29	27.12	2.47%	trans-beta-Santalol	1718.00	Sesquiterpenols
30	27.26	1.54%	Unknown Sandal	#N/A	#N/A
31	27.38	2.73%	Unknown Sandal	#N/A	#N/A
32	27.56	0.12%	(Z)-Nuciferol	1724.50	Sesquiterpenols
33	27.56	Co-Eluting	cis-Lanceol	1763.00	Sesquiterpenols
34	27.64	0.38%	(E,E)-Farnesol	1726.57	Sesquiterpenols
35	27.85	0.38%	Unknown Sandal	#N/A	#N/A
36	28.24	0.09%	Unknown Sandal	#N/A	#N/A
37	28.53	0.11%	Unknown Sandal	#N/A	#N/A
38	28.67	0.05%	Unknown Sandal	#N/A	#N/A
39	28.85	0.09%	Lanceol Isomer	#N/A	#N/A
40	29.08	0.05%	Unknown Sandal	#N/A	#N/A