



Essential Validation Services



Nature's FUSIONS
ESSENTIAL OILS



Sample:

Client: | Nature's Fusions
Sample: | Calming Core (Digestive)
Batch # | NF-NF.CALM-18-A
CAS Number |
Type: | Blend

Conclusion:

- No adulterants, diluents, or contaminants were detected via this method.
- This oil meets the expected profile for genuine oil of Calming Core (Digestive).

X

Validated By:



Essential Validation Services

747 SW 2nd Ave, Gainesville, FL 32601

Phone: 317-361-5044 E-mail: Adam@essentialvalidationservices.com

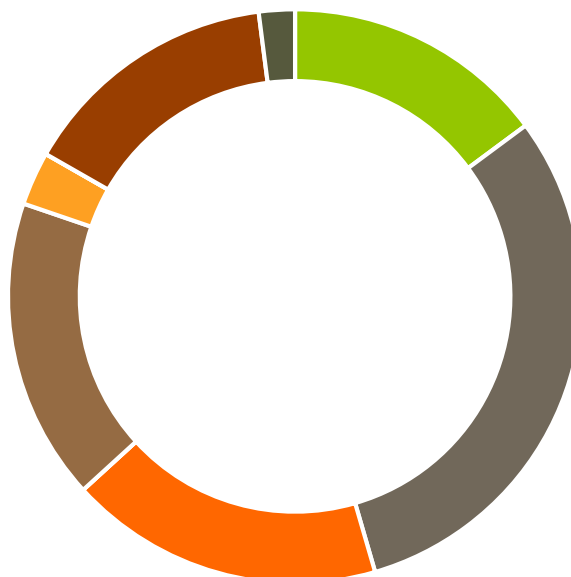
Summary of Analyses

A fresh sample of Calming Core (Digestive) (10 uL in .5to.5 mL Hexane + ETOH) was prepared and analyzed via split injection GC/EI-MS.



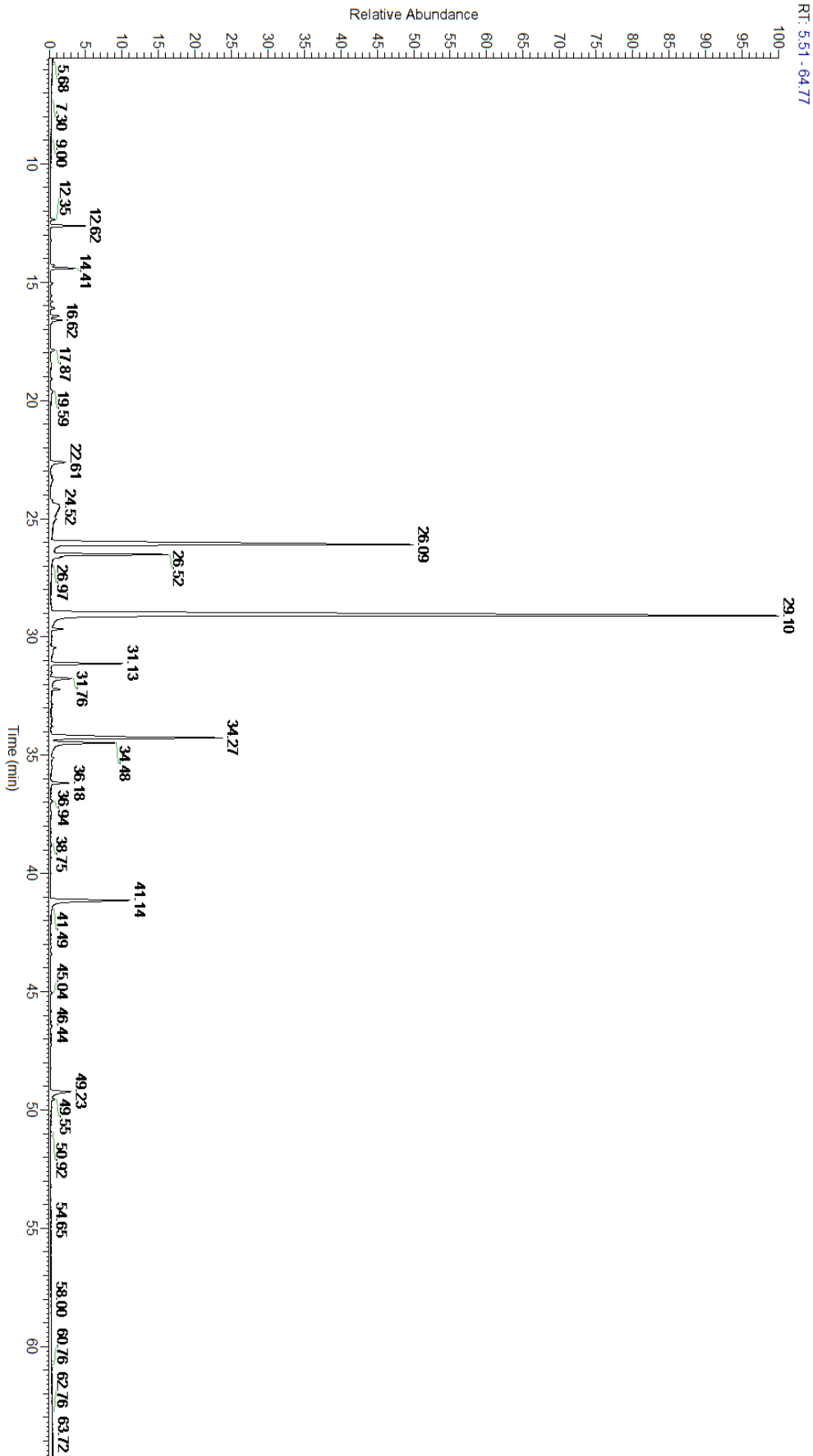
Main Compounds	Percentages
alpha-Zingiberene	13.56%
Menthol	13.07%
Menthone	9.88%
Methyl chavicol	7.91%
(E)-Anethole	6.80%
gamma-Cadinene (Co-Eluting)	5.82%
para-Cymene	4.89%
Linalool	4.65%
ar-Curcumene	4.50%
beta-Bisabolene	3.99%
Carvone	3.10%
Menthyl acetate	3.02%
Isomenthone	2.49%

Monoterpenes	Sesquiterpenes	Monoterpenols	Sesquiterpenols	Ketones
14.85%	30.65%	17.72%	0.00%	17.02%
Esters	Ethers	Aldehydes	Phenols	Other
3.02%	0.00%	0.00%	14.71%	2.03%



- Monoterpenes
- Sesquiterpenes
- Monoterpenols
- Sesquiterpenols
- Ketones
- Esters
- Ethers
- Phenols
- Other

ESSENTIAL VALIDATION SERVICES | 747 SW 2ND AVE GAINESVILLE, FLORIDA 32601 | 317-361-5044





Total Percentage		97.97%			
Peak Number	RT	Area %	Compound Name	RI	Chemical Family
1	12.62	1.78%	alpha-Pinene	936.10	Monoterpene
2	13.23	2.25%	Camphene	950.30	Monoterpene
3	14.29	0.10%	Sabinene	973.00	Monoterpene
4	14.42	0.53%	beta-Pinene	974.00	Monoterpene
5	15.05	0.39%	Myrcene	989.20	Monoterpene
6	15.58	0.25%	alpha-Phellandrene	1002.00	Monoterpene
7	16.43	0.17%	meta-Cymene	1022.00	Monoterpene
8	16.62	4.89%	para-Cymene	1024.30	Monoterpene
9	16.71	2.27%	Limonene	1029.50	Monoterpene
10	16.72	Co-Eluting	1,8-Cineole	1031.80	Monoterpene Ether
11	16.99	0.55%	(Z)-beta-Ocimene	1037.80	Monoterpene
12	17.42	0.47%	(E)-beta-Ocimene	1047.70	Monoterpene
13	17.87	0.18%	gamma-Terpinene	1054.00	Monoterpene
14	19.06	0.91%	Fenchone	1089.57	Monoterpene Ketone
15	19.54	4.65%	Linalool	1099.00	Monoterpenol
16	21.32	0.28%	Camphor	1147.55	Monoterpene Ketone
17	21.68	9.88%	Menthone	1155.00	Monoterpene Ketone
18	22.06	2.49%	Isomenthone	1164.33	Monoterpene Ketone
19	22.47	13.07%	Menthol	1177.40	Monoterpenol
20	23.36	7.91%	Methyl chavicol	1193.40	Phenylpropanoid
21	24.87	0.36%	Pulegone	1244.43	Monoterpene Ketone
22	25.02	3.10%	Carvone	1248.14	Monoterpene Ketone
23	26.51	6.80%	(E)-Anethole	1283.00	Phenylpropanoid
24	26.75	3.02%	Menthyl acetate	1297.00	Monoterpene Ester
25	29.64	0.19%	alpha-Copaene	1379.00	Sesquiterpene
26	30.13	0.47%	beta-Elemene	1389.20	Sesquiterpene
27	30.50	0.09%	Sesquithujene	1405.00	Sesquiterpene
28	31.11	1.32%	beta-Caryophyllene	1427.14	Sesquiterpene
29	32.97	4.50%	ar-Curcumene	1480.50	Sesquiterpene
30	33.38	13.56%	alpha-Zingiberene	1491.75	Sesquiterpene
31	33.59	1.02%	1-epi-Bicyclosesquiphellandrene	1489.25	Monoterpene
32	33.68	0.71%	(Z,E)-alpha-Farnesene	1500.50	Sesquiterpene
33	33.76	3.99%	beta-Bisabolene	1509.86	Sesquiterpene
34	34.25	5.82%	gamma-Cadinene	1515.29	Sesquiterpene
35	34.26	Co-Eluting	beta-Sesquiphellandrene	1524.57	Sesquiterpene