



Essential Validation Services



Nature's FUSIONS
ESSENTIAL OILS



Sample:

Client: | Nature's Fusions
Sample: | Cooling Water (Anti-inflammatory)
Batch # | NF-NF.COOL-18-A
CAS Number |
Type: | Blend

Conclusion:

- No adulterants, diluents, or contaminants were detected via this method.
- This oil meets the expected profile for genuine oil of Cooling Water (Anti-inflammatory).

X 

Validated By:



Essential Validation Services

747 SW 2nd Ave, Gainesville, FL 32601

Phone: 317-361-5044 E-mail: Adam@essentialvalidationservices.com

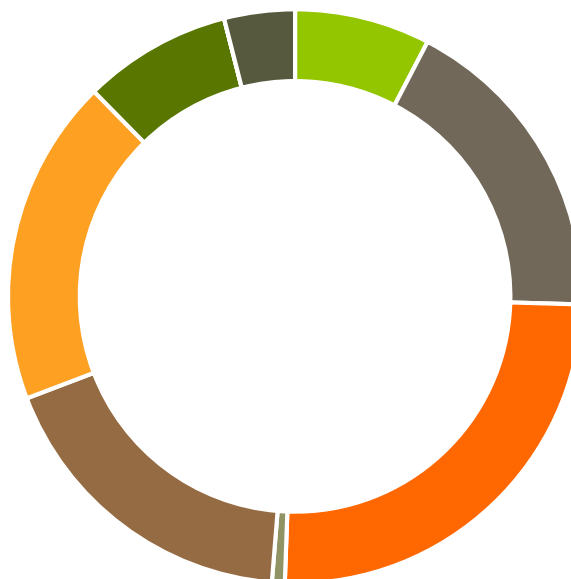
Summary of Analyses

A fresh sample of Cooling Water (Anti-inflammatory) (10 uL in .5to.5 mL Hexane + ETOH) was prepared and analyzed via split injection GC/EI-MS.



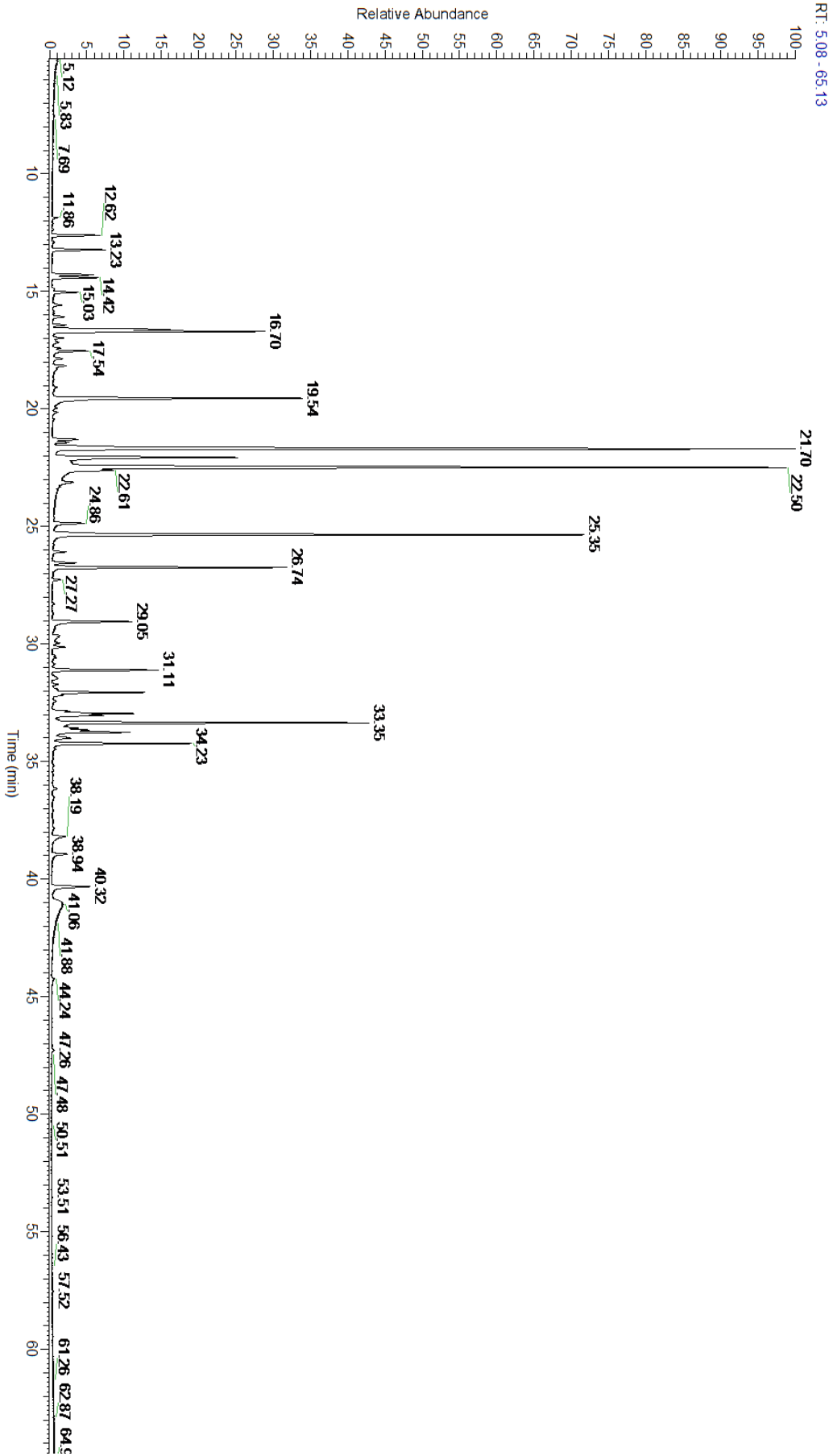
Main Compounds	Percentages
Menthol	17.90%
Menthone	16.47%
Linalyl acetate	10.30%
alpha-Zingiberene	5.82%
Linalool	5.65%
Menthyl acetate	4.48%
Menthofuran (Co-Eluting)	4.40%
1,8-Cineole (Co-Eluting)	3.97%
beta-Sesquiphellandrene	2.67%
para-Cymene	2.33%
beta-Caryophyllene	2.18%
Neryl acetate	1.80%
Aromadendrene	1.79%

Monoterpenes	Sesquiterpenes	Monoterpenols	Sesquiterpenols	Ketones
7.64%	17.81%	25.12%	0.72%	17.93%
Esters	Ethers	Aldehydes	Phenols	Other
18.43%	8.37%	0.00%	0.00%	3.98%



- Monoterpenes
- Sesquiterpenes
- Monoterpenols
- Sesquiterpenols
- Ketones
- Esters
- Ethers
- Phenols
- Other

ESSENTIAL VALIDATION SERVICES | 747 SW 2ND AVE GAINESVILLE, FLORIDA 32601 | 317-361-5044





Total Percentage		97.05%			
Peak Number	RT	Area %	Compound Name	RI	Chemical Family
1	11.86	0.07%	Isobutyl isobutyrate	908.00	Aliphatic Ester
2	12.62	0.89%	alpha-Pinene	936.10	Monoterpene
3	12.89	0.01%	Ibobutyl methacrylate		
4	13.23	0.96%	Camphene	950.30	Monoterpene
5	14.29	0.77%	Sabinene	973.00	Monoterpene
6	14.42	0.89%	beta-Pinene	974.00	Monoterpene
7	15.03	0.47%	Myrcene	989.20	Monoterpene
8	15.58	0.16%	alpha-Phellandrene	1002.00	Monoterpene
9	16.08	0.22%	Isoamyl isobutyrate	1007.00	Aliphatic Ester
10	16.43	0.22%	meta-Cymene	1022.00	Monoterpene
11	16.62	2.33%	para-Cymene	1024.30	Monoterpene
12	16.70	3.97%	1,8-Cineole	1031.80	Monoterpene Ether
13	16.71	Co-Eluting	beta-Phellandrene	1030.00	Monoterpene
14	16.99	0.16%	(Z)-beta-Ocimene	1037.80	Monoterpene
15	17.42	0.10%	(E)-beta-Ocimene	1047.70	Monoterpene
16	17.54	0.67%	Isobutyl angelate	1053.75	Aliphatic Ester
17	17.85	0.16%	gamma-Terpinene	1054.00	Monoterpene
18	18.17	0.26%	Artemisia ketone	1057.00	Monoterpene Ketone
19	19.07	0.05%	Terpinolene	1092.10	Monoterpene
20	19.54	5.65%	Linalool	1099.00	Monoterpenol
21	21.30	0.49%	Camphor	1147.55	Monoterpene Ketone
22	21.42	0.25%	Isoamyl angelate	1154.75	Aliphatic Ester
23	21.70	16.47%	Menthone	1155.00	Monoterpene Ketone
24	22.07	4.40%	Menthofuran	1164.00	Monoterpene Ether
25	22.08	Co-Eluting	IsoMenthone	1164.33	Monoterpene Ketone
26	22.08	Co-Eluting	NeoMenthol	1165.00	Monoterpenol
27	22.50	17.90%	Menthol	1177.40	Monoterpenol
28	22.61	1.14%	Terpinen-4-ol	1180.57	Monoterpenol
29	22.70	0.13%	Isomenthol	1183.75	Monoterpenol
30	23.13	0.30%	alpha-Terpineol	1191.71	Monoterpenol
31	24.86	0.71%	Pulegone	1244.43	Monoterpene Ketone
32	25.35	10.30%	Linalyl acetate	1263.80	Monoterpene Ester
33	26.09	0.21%	Neomenthyl acetate	1275.00	Monoterpene Ester
34	26.55	0.43%	Lavandulyl acetate	1285.00	Monoterpene Ester
35	26.74	4.48%	Menthyl acetate	1297.00	Monoterpene Ester
36	29.05	1.80%	Neryl acetate	1362.90	Monoterpene Ester
37	29.96	0.10%	beta-Bourbonene	1388.70	Sesquiterpene
38	30.13	0.23%	beta-Elemene	1389.20	Sesquiterpene
39	31.11	2.18%	beta-Caryophyllene	1427.14	Sesquiterpene
40	31.46	0.12%	trans-alpha-Bergamotene	1435.00	Sesquiterpene
41	32.06	1.79%	Aromadendrene	1449.80	Sesquiterpene
42	32.17	0.19%	(Z)-beta-Farnesene	1453.40	Sesquiterpene
43	32.86	0.25%	allo-Aromadendrene	1471.00	Sesquiterpene



44	32.96	1.52%	ar-Curcumene	1480.50	Sesquiterpene
45	33.04	0.95%	Germacrene D	1484.71	Sesquiterpene
46	33.35	5.82%	alpha-Zingiberene	1491.75	Sesquiterpene
47	33.58	0.48%	1-epi-Bicyclosesquiphellandrene	1489.25	Monoterpene
48	33.66	0.57%	(Z,E)-alpha-Farnesene	1500.50	Sesquiterpene
49	33.75	1.42%	beta-Bisabolene	1509.86	Sesquiterpene
50	34.23	2.67%	beta-Sesquiphellandrene	1524.57	Sesquiterpene
51	38.19	0.41%	alpha-Bisabolol oxide B	1655.15	Sesquiterpenol
52	38.94	0.31%	alpha-Bisabolone oxide	1682.00	Sesquiterpenol
53	40.32	1.03%	Chamazulene	1717.50	Azulene

ESSENTIAL VALIDATION SERVICES | 747 SW 2ND AVE GAINESVILLE, FLORIDA 32601 | 317-361-5044