



Essential Validation Services



Nature's FUSIONS
ESSENTIAL OILS



Sample:

Client: | Nature's Fusions
Sample: | Crystal Breath (Respiratory / Sinus)
Batch # | NF-NF.CRYS-18-A
CAS Number |
Type: | Blend

Conclusion:

- No adulterants, diluents, or contaminants were detected via this method.
- This oil meets the expected profile for genuine oil of Crystal Breath (Respiratory / Sinus).

X 

Validated By:



Essential Validation Services

747 SW 2nd Ave, Gainesville, FL 32601

Phone: 317-361-5044 E-mail: Adam@essentialvalidationservices.com

Summary of Analyses

A fresh sample of Crystal Breath (Respiratory / Sinus) (10 uL in .5to.5 mL Hexane + ETOH) was prepared and analyzed via split injection GC/EI-MS.



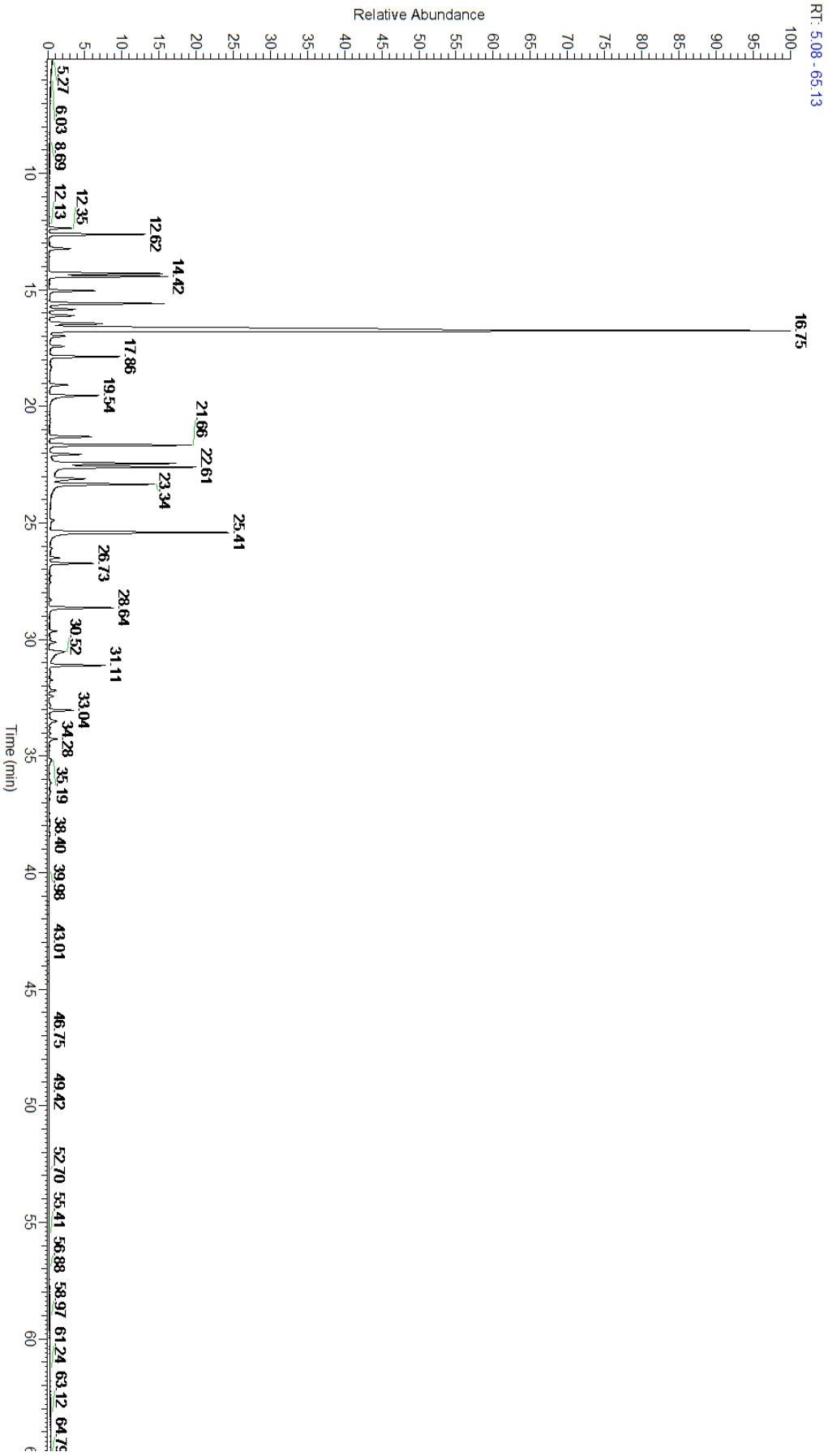
Main Compounds	Percentages
Limonene (Co-Eluting)	37.43%
Piperitone	6.83%
Terpinen-4-ol	5.24%
Menthone	4.63%
Menthol	3.87%
beta-Pinene	3.70%
Methyl chavicol	3.61%
alpha-Phellandrene	3.59%
Sabinene	3.48%
alpha-Pinene	2.85%
alpha-Terpinyl acetate	2.19%
gamma-Terpinene	2.15%
para-Cymene	1.95%

Monoterpenes	Sesquiterpenes	Monoterpenols	Sesquiterpenols	Ketones
60.08%	2.30%	14.70%	0.00%	11.57%
Esters	Ethers	Aldehydes	Phenols	Other
2.38%	2.19%	0.00%	4.72%	2.06%



- Monoterpenes
- Sesquiterpenes
- Monoterpenols
- Sesquiterpenols
- Ketones
- Esters
- Ethers
- Phenols
- Other

ESSENTIAL VALIDATION SERVICES | 747 SW 2ND AVE GAINESVILLE, FLORIDA 32601 | 317-361-5044



ESSENTIAL VALIDATION SERVICES | 747 SW 2ND AVE GAINESVILLE, FLORIDA 32601 | 317-361-5044



ESSENTIAL VALIDATION SERVICES | 747 SW 2ND AVE GAINESVILLE, FLORIDA 32601 | 317-361-5044

Total Percentage		97.94%			
Peak Number	RT	Area %	Compound Name	RI	Chemical Family
1	12.35	0.64%	alpha-Thujene	927.80	Monoterpene
2	12.62	2.85%	alpha-Pinene	936.10	Monoterpene
3	13.23	0.71%	Camphene	950.30	Monoterpene
4	14.30	3.48%	Sabinene	973.00	Monoterpene
5	14.42	3.70%	beta-Pinene	974.00	Monoterpene
6	15.04	1.40%	Myrcene	989.20	Monoterpene
7	15.58	3.59%	alpha-Phellandrene	1002.00	Monoterpene
8	15.83	0.79%	delta-3-Carene	1008.00	Monoterpene
9	16.10	0.77%	Hexyl acetate	1009.00	Aliphatic Ester
10	16.45	1.95%	para-Cymene	1024.30	Monoterpene
11	16.75	37.43%	Limonene	1029.50	Monoterpene
12	16.76	Co-Eluting	1,8-Cineole	1031.80	Monoterpene Ether
13	16.99	0.42%	(Z)-beta-Ocimene	1037.80	Monoterpene
14	17.41	0.42%	(E)-beta-Ocimene	1047.70	Monoterpene
15	17.86	2.15%	gamma-Terpinene	1054.00	Monoterpene
16	19.08	0.55%	Terpinolene	1092.10	Monoterpene
17	19.54	1.92%	Linalool	1099.00	Monoterpenol
18	21.30	1.38%	Isopulegol	1151.25	Monoterpenol
19	21.66	4.63%	Menthone	1155.00	Monoterpene Ketone
20	22.05	1.02%	Neomenthol	1165.00	Monoterpenol
21	22.44	3.87%	Menthol	1177.40	Monoterpenol
22	22.61	5.24%	Terpinen-4-ol	1180.57	Monoterpenol
23	23.10	1.27%	alpha-Terpineol	1191.71	Monoterpenol
24	23.34	3.61%	Methyl chavicol	1193.40	Phenylpropanoid
25	24.87	0.11%	Pulegone	1244.43	Monoterpene Ketone
26	25.41	6.83%	Piperitone	1258.50	Monoterpene Ketone
27	26.09	0.05%	Neo-Menthyl acetate	1275.00	Monoterpene Ester
28	26.50	0.27%	Bornyl acetate	1288.29	Monoterpene Ester
29	26.73	1.29%	Menthyl acetate	1297.00	Monoterpene Ester
30	28.64	2.19%	alpha-Terpinyl acetate	1353.00	Monoterpene Ether
31	30.52	1.11%	Methyl Eugenol	1407.27	Phenylpropanoid
32	31.11	1.74%	beta-Caryophyllene	1427.14	Sesquiterpene
33	32.20	0.19%	alpha-Humulene	1461.43	Sesquiterpene
34	32.43	0.11%	alloAromadendrene	1471.00	Sesquiterpene
35	34.28	0.26%	gamma-Cadinene	1515.29	Sesquiterpene