



Essential Validation Services



Nature's FUSIONS
ESSENTIAL OILS



Sample:

Client: | Nature's Fusions
Sample: | Eye of the Storm (Relaxing)
Batch # | NF-NF.EYES-18-A
CAS Number |
Type: | Blend

Conclusion:

- No adulterants, diluents, or contaminants were detected via this method.
- This oil meets the expected profile for genuine oil of Eye of the Storm (Relaxing).

X 

Validated By:



Essential Validation Services

747 SW 2nd Ave, Gainesville, FL 32601

Phone: 317-361-5044 E-mail: Adam@essentialvalidationservices.com

Summary of Analyses

A fresh sample of Eye of the Storm (Relaxing) (10 uL in .5to.5 mL Hexane + ETOH) was prepared and analyzed via split injection GC/EI-MS.



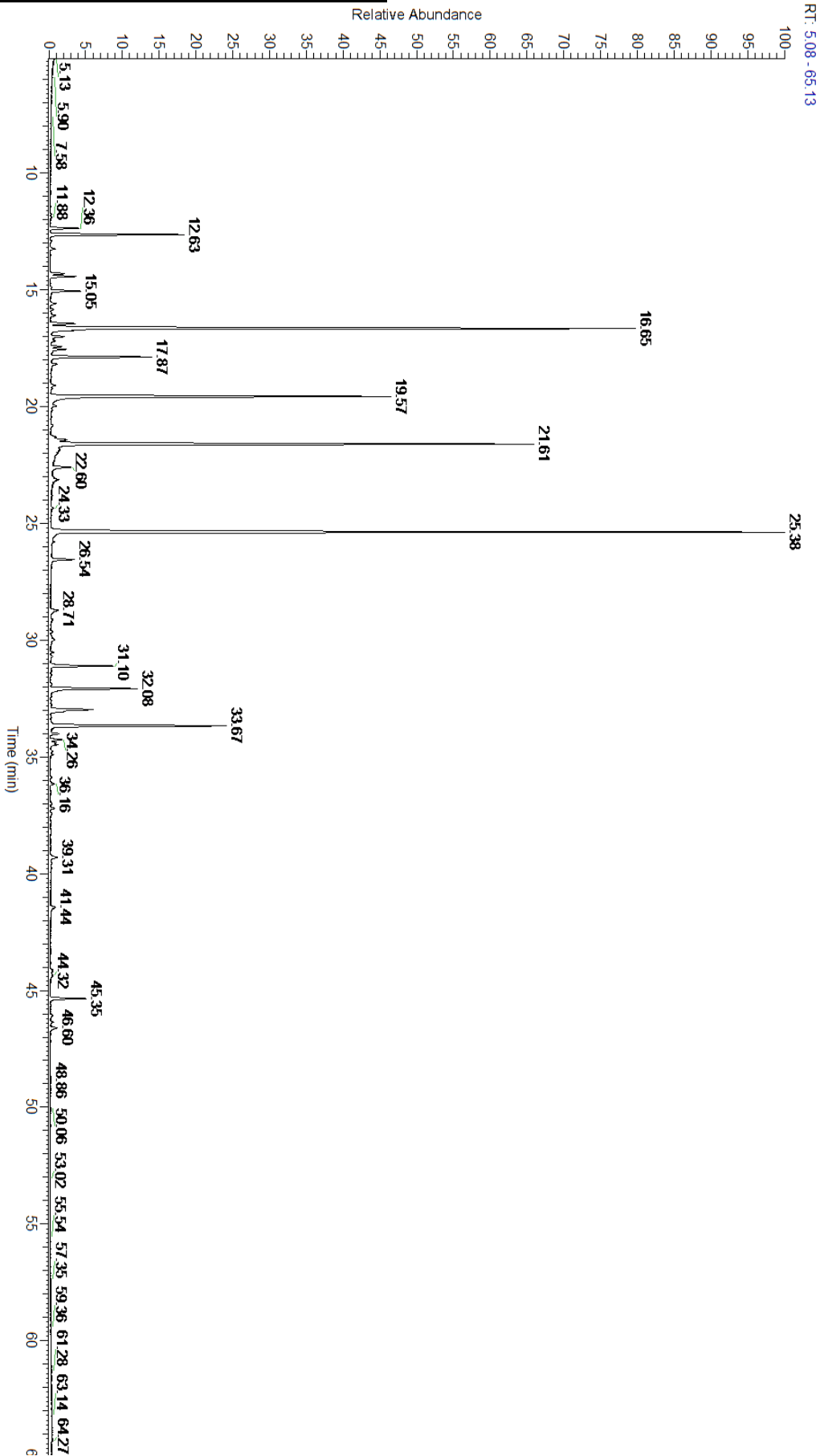
Main Compounds	Percentages
Linalyl acetate	22.90%
Limonene	18.51%
Citronellal	15.68%
Linalool	11.27%
beta-Himachalene	5.58%
alpha-Pinene	3.73%
Aromadendrene	2.96%
gamma-Terpinene	2.95%
beta-Caryophyllene	1.90%
gamma-Himachalene	1.73%
Myrcene	0.87%
alpha-Thujene	0.79%
beta-Pinene	0.76%

Monoterpenes	Sesquiterpenes	Monoterpenols	Sesquiterpenols	Ketones
29.98%	12.93%	11.92%	0.00%	0.20%
Esters	Ethers	Aldehydes	Phenols	Other
24.35%	0.15%	15.68%	0.00%	4.79%



- Monoterpenes
- Sesquiterpenes
- Monoterpenols
- Sesquiterpenols
- Ketones
- Esters
- Ethers
- Phenols
- Other

ESSENTIAL VALIDATION SERVICES | 747 SW 2ND AVE GAINESVILLE, FLORIDA 32601 | 317-361-5044



ESSENTIAL VALIDATION SERVICES | 747 SW 2ND AVE GAINESVILLE, FLORIDA 32601 | 317-361-5044



ESSENTIAL VALIDATION SERVICES | 747 SW 2ND AVE GAINESVILLE, FLORIDA 32601 | 317-361-5044

Total Percentage		95.21%			
Peak Number	RT	Area %	Compound Name	RI	Chemical Family
1	11.88	0.02%	Isobutyl isobutyrate	908.00	Aliphatic Ester
2	12.36	0.79%	alpha-Thujene	927.80	Monoterpene
3	12.63	3.73%	alpha-Pinene	936.10	Monoterpene
4	13.24	0.12%	Camphene	950.30	Monoterpene
5	14.30	0.38%	Sabinene	973.00	Monoterpene
6	14.42	0.76%	beta-Pinene	974.00	Monoterpene
7	14.89	0.03%	Octan-3-one	981.00	Aliphatic Ketone
8	15.05	0.87%	Myrcene	989.20	Monoterpene
9	15.59	0.14%	alpha-Phellandrene	1002.00	Monoterpene
10	16.10	0.14%	alpha-Terpinene	1014.00	Monoterpene
11	16.45	0.72%	para-Cymene	1024.30	Monoterpene
12	16.65	18.51%	Limonene	1029.50	Monoterpene
13	16.75	0.15%	1,8-Cineole	1031.80	Monoterpene Ether
14	17.00	0.40%	(Z)-beta-Ocimene	1037.80	Monoterpene
15	17.43	0.29%	(E)-beta-Ocimene	1047.70	Monoterpene
16	17.55	0.44%	Isobutyl angelate	1053.75	Aliphatic Ester
17	17.87	2.95%	gamma-Terpinene	1054.00	Monoterpene
18	18.19	0.17%	Artemisia ketone	1057.00	Monoterpene Ketone
19	19.09	0.13%	Terpinolene	1092.10	Monoterpene
20	19.57	11.27%	Linalool	1099.00	Monoterpenol
21	20.82	0.05%	Alloocimene	1129.90	Monoterpene
22	21.42	0.62%	Butanoic Acid Ester		
23	21.61	15.68%	Citronellal	1154.50	Monoterpene Aldehyde
24	21.90	0.08%	Isopulegol	1151.25	Monoterpenol
25	22.60	0.57%	Terpinen-4-ol	1180.57	Monoterpenol
26	25.38	22.90%	Linalyl acetate	1263.80	Monoterpene Ester
27	26.54	0.68%	Lavandulyl acetate	1285.00	Monoterpene Ester
28	28.71	0.31%	Citronellyl acetate	1357.83	Monoterpene Ester
29	31.10	1.90%	beta-Caryophyllene	1427.14	Sesquiterpene
30	32.08	2.96%	Aromadendrene	1449.80	Sesquiterpene
31	32.97	1.73%	gamma-Himachalene	1476.50	Sesquiterpene
32	33.67	5.58%	beta-Himachalene	1497.75	Sesquiterpene
33	34.01	0.23%	alpha-Dehydro-ar-himachalene	1516.00	Sesquiterpene
34	34.26	0.32%	gamma-Cadinene	1515.29	Sesquiterpene
35	34.39	0.16%	delta-Cadinene	1524.14	Sesquiterpene
36	34.90	0.05%	alpha-Calacorene	1537.14	Sesquiterpene