



Essential Validation Services



Nature's FUSIONS
ESSENTIAL OILS



Sample:

Client: | Nature's Fusions
Sample: | Lullaby (Sleep / Relaxation)
Batch # | NF-NF.LULL-18-A
CAS Number |
Type: | Blend

Conclusion:

- No adulterants, diluents, or contaminants were detected via this method.
- This oil meets the expected profile for genuine oil of Lullaby (Sleep / Relaxation).

X

Validated By:



Essential Validation Services

747 SW 2nd Ave, Gainesville, FL 32601

Phone: 317-361-5044 E-mail: Adam@essentialvalidationservices.com

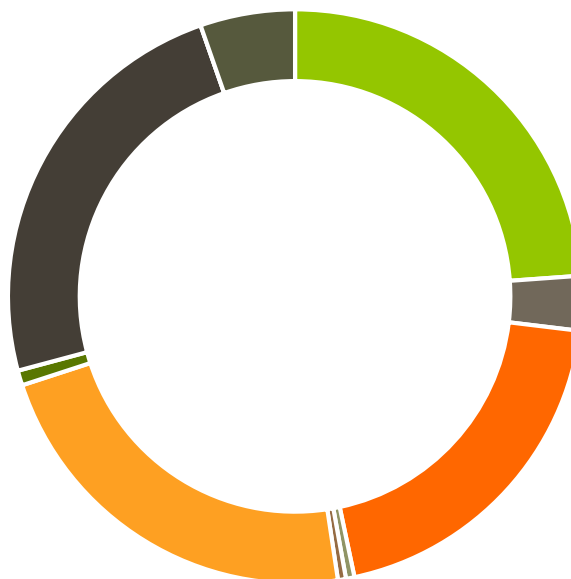
Summary of Analyses

A fresh sample of Lullaby (Sleep / Relaxation) (10 uL in .5to.5 mL Hexane + ETOH) was prepared and analyzed via split injection GC/EI-MS.



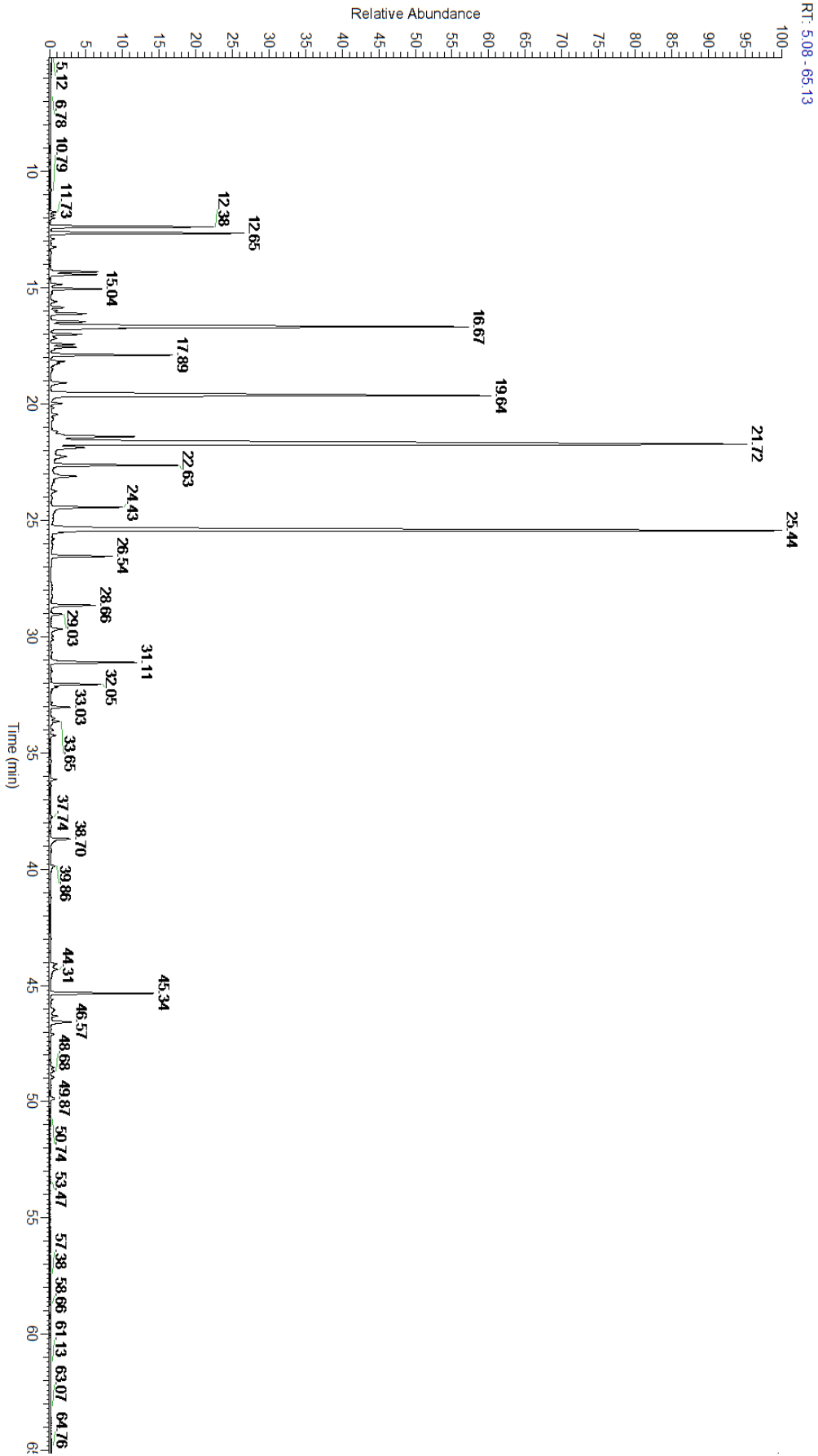
Main Compounds	Percentages
Citronellal	23.83%
Linalyl acetate	19.22%
Linalool	12.53%
Limonene	9.78%
alpha-Pinene	3.37%
alpha-Thujene	2.96%
Terpinen-4-ol	2.39%
gamma-Terpinene	2.24%
Isopulegol	1.83%
beta-Caryophyllene	1.66%
Citronellol	1.31%
Lavandulyl acetate (Co-Eluti	1.04%
Myrcene	0.90%

Monoterpenes	Sesquiterpenes	Monoterpenols	Sesquiterpenols	Ketones
23.85%	3.07%	19.76%	0.48%	0.45%
Esters	Ethers	Aldehydes	Phenols	Other
22.38%	0.84%	23.83%	0.00%	5.34%



- Monoterpenes
- Sesquiterpenes
- Monoterpenols
- Sesquiterpenols
- Ketones
- Esters
- Ethers
- Phenols
- Other

ESSENTIAL VALIDATION SERVICES | 747 SW 2ND AVE GAINESVILLE, FLORIDA 32601 | 317-361-5044



ESSENTIAL VALIDATION SERVICES | 747 SW 2ND AVE GAINESVILLE, FLORIDA 32601 | 317-361-5044



Total Percentage		94.66%			
Peak Number	RT	Area %	Compound Name	RI	Chemical Family
1	11.88	0.06%	Isobutyl isobutyrate	908.00	Aliphatic Ester
2	12.38	2.96%	alpha-Thujene	927.80	Monoterpene
3	12.65	3.37%	alpha-Pinene	936.10	Monoterpene
4	13.25	0.09%	Camphene	950.30	Monoterpene
5	14.31	0.86%	Sabinene	973.00	Monoterpene
6	14.43	0.84%	beta-Pinene	974.00	Monoterpene
7	14.84	0.22%	Octan-3-one	981.00	Aliphatic Ketone
8	15.04	0.90%	Myrcene	989.20	Monoterpene
9	15.84	0.21%	alpha-Phellandrene	1002.00	Monoterpene
10	15.99	0.13%	Hexyl acetate	1009.00	Aliphatic Ester
11	16.10	0.67%	delta-3-Carene	1008.00	Monoterpene
12	16.46	0.66%	para-Cymene	1024.30	Monoterpene
13	16.67	9.78%	Limonene	1029.50	Monoterpene
14	16.75	0.84%	1,8-Cineole	1031.80	Monoterpene Ether
15	17.00	0.51%	(Z)-beta-Ocimene	1037.80	Monoterpene
16	17.43	0.41%	(E)-beta-Ocimene	1047.70	Monoterpene
17	17.56	0.45%	Isobutyl angelate	1053.75	Aliphatic Ester
18	17.89	2.24%	gamma-Terpinene	1054.00	Monoterpene
19	18.16	0.23%	Artemisia ketone	1057.00	Monoterpene Ketone
20	19.08	0.35%	Terpinolene	1092.10	Monoterpene
21	19.64	12.53%	Linalool	1099.00	Monoterpenol
22	19.98	0.17%	Octen-3-yl acetate	1107.00	Monoterpene Ester
23	21.40	1.83%	Isopulegol	1151.25	Monoterpenol
24	21.72	23.83%	Citronellal	1154.50	Monoterpene Aldehyde
25	21.87	0.79%	Lavandulol	1161.50	Monoterpenol
26	22.26	0.34%	Borneol	1168.71	Monoterpenol
27	22.63	2.39%	Terpinen-4-ol	1180.57	Monoterpenol
28	23.11	0.57%	alpha-Terpineol	1191.71	Monoterpenol
29	23.74	0.11%	Hexenyl butanoate		
30	24.43	1.31%	Citronellol	1229.25	Monoterpenol
31	25.44	19.22%	Linalyl acetate	1263.80	Monoterpene Ester
32	26.54	1.04%	Lavandulyl acetate	1285.00	Monoterpene Ester
33	26.55	Co-Eluting	Neryl formate	1280.50	Monoterpene Ester
34	28.66	0.84%	Citronellyl acetate	1357.83	Monoterpene Ester
35	29.03	0.21%	Neryl acetate	1362.90	Monoterpene Ester
36	29.68	0.26%	Geranyl acetate	1379.20	Monoterpene Ester
37	31.11	1.66%	beta-Caryophyllene	1427.14	Sesquiterpene
38	32.05	0.85%	(Z)-beta-Farnesene	1453.40	Sesquiterpene
39	32.18	0.13%	alpha-Humulene	1461.43	Sesquiterpene
40	33.03	0.35%	gamma-Murolene	1478.86	Sesquiterpene
41	34.25	0.08%	gamma-Cadinene	1515.29	Sesquiterpene
42	38.70	0.38%	cis-alpha-Santalol	1668.00	Sesquiterpenol
43	39.86	0.10%	trans-beta-Santalol	1718.00	Sesquiterpenol