



*Essential Validation Services*



**Nature's** FUSIONS  
ESSENTIAL OILS

### Sample:

---

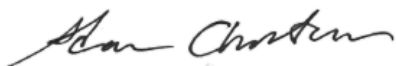
Client: | Nature's Fusions  
Sample: | Nature's Sword (Extreme Protective)  
Batch # | NF-NF.NASW-18-A  
CAS Number |  
Type: | Blend

---

### Conclusion:

- No adulterants, diluents, or contaminants were detected via this method.
- This oil meets the expected profile for genuine oil of Nature's Sword (Extreme Protective).

X



Validated By:



Essential Validation Services

747 SW 2nd Ave, Gainesville, FL 32601

Phone: 317-361-5044 E-mail: Adam@essentialvalidationservices.com

### Summary of Analyses

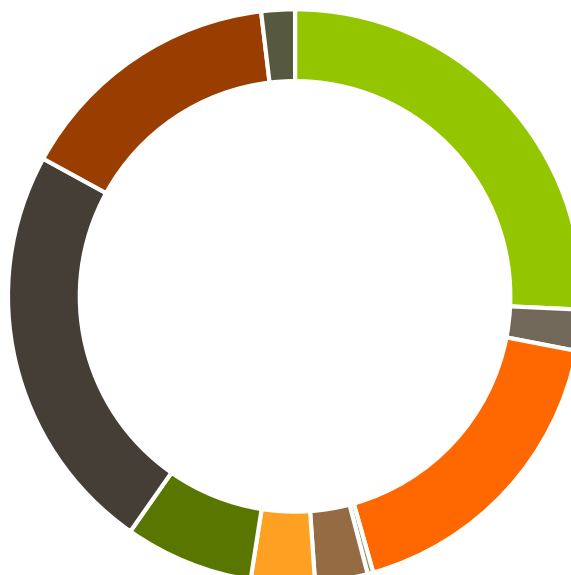
---

A fresh sample of Nature's Sword (Extreme Protective) (10 uL in .5to.5 mL Hexane + ETOH) was prepared and analyzed via split injection GC/EI-MS.



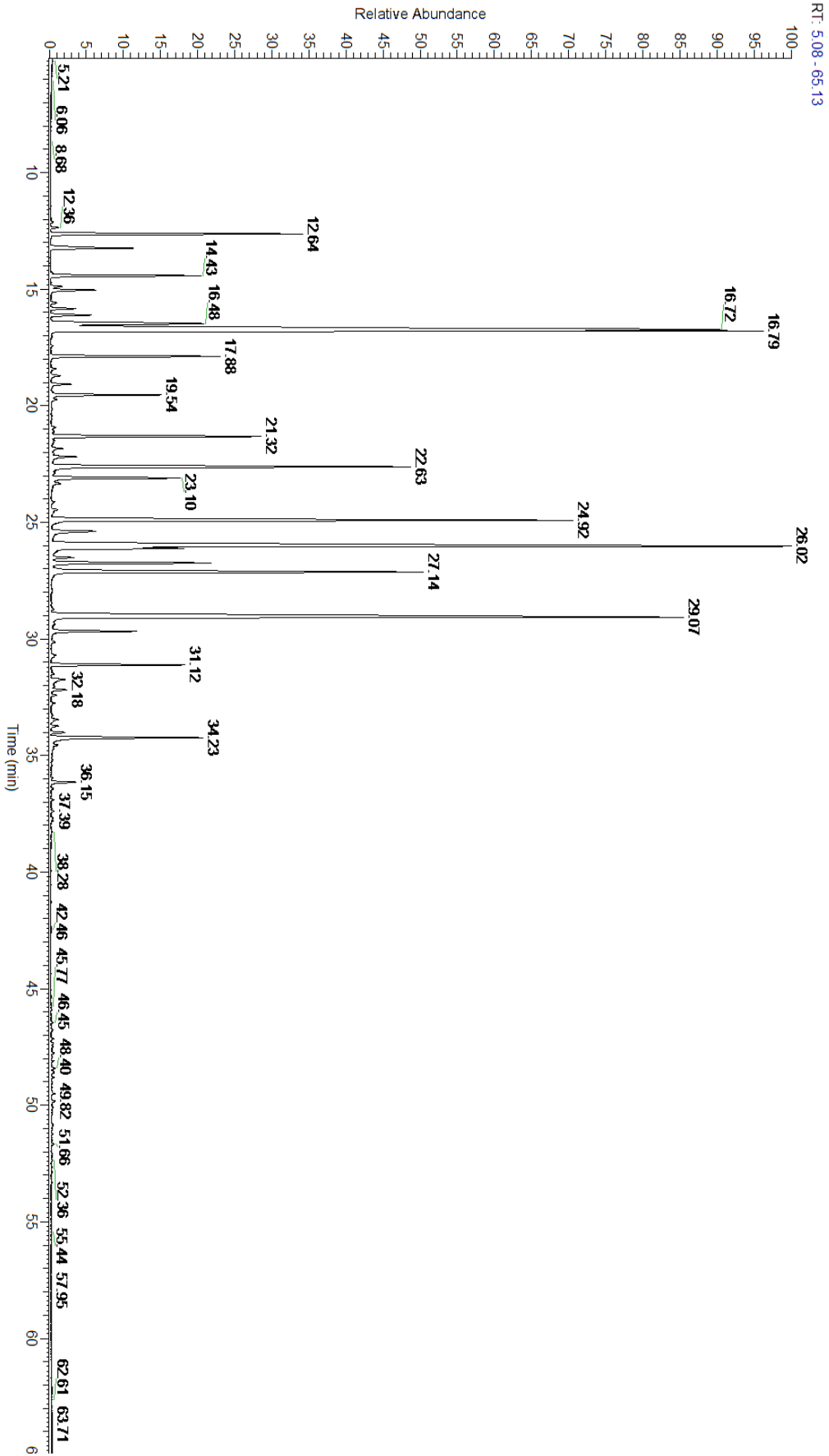
Main Compounds	Percentages
Geranial	14.95%
Eugenol	13.59%
Limonene	12.95%
Neral	8.28%
1,8-Cineole	7.25%
Carvacrol	5.82%
Terpinen-4-ol	5.29%
alpha-Pinene	3.07%
para-Cymene	2.93%
Camphor	2.83%
Eugenyl acetate	2.28%
Thymol	2.18%
gamma-Terpinene	2.13%

Monoterpenes	Sesquiterpenes	Monoterpenols	Sesquiterpenols	Ketones
25.74%	2.31%	17.56%	0.32%	2.96%
Esters	Ethers	Aldehydes	Phenols	Other
3.59%	7.25%	23.23%	15.15%	1.89%



- Monoterpenes
- Sesquiterpenes
- Monoterpenols
- Sesquiterpenols
- Ketones
- Esters
- Ethers
- Phenols
- Other

ESSENTIAL VALIDATION SERVICES | 747 SW 2<sup>ND</sup> AVE GAINESVILLE, FLORIDA 32601 | 317-361-5044





ESSENTIAL VALIDATION SERVICES | 747 SW 2<sup>ND</sup> AVE GAINESVILLE, FLORIDA 32601 | 317-361-5044

Total Percentage		98.11%			
Peak Number	RT	Area %	Compound Name	RI	Chemical Family
1	Apex RT	Co-Eluting			
2	12.13	0.02%	Xi-Fenchene	910.50	Monoterpene
3	12.36	0.09%	alpha-Thujene	927.80	Monoterpene
4	12.64	3.07%	alpha-Pinene	936.10	Monoterpene
5	13.24	1.21%	Camphene	950.30	Monoterpene
6	14.30	0.01%	Sabinene	973.00	Monoterpene
7	14.43	1.88%	beta-Pinene	974.00	Monoterpene
8	14.88	0.13%	6-Methyl-5-hepten-2-one	982.00	Aliphatic Ketone
9	15.05	0.58%	Myrcene	989.20	Monoterpene
10	15.59	0.07%	alpha-Phellandrene	1002.00	Monoterpene
11	16.11	0.53%	delta-3-Carene	1008.00	Monoterpene
12	16.48	2.93%	para-Cymene	1024.30	Monoterpene
13	16.72	12.95%	Limonene	1029.50	Monoterpene
14	16.79	7.25%	1,8-Cineole	1031.80	Monoterpene Ether
15	17.44	0.02%	(E)-beta-Ocimene	1047.70	Monoterpene
16	17.88	2.13%	gamma-Terpinene	1054.00	Monoterpene
17	19.07	0.25%	Terpinolene	1092.10	Monoterpene
18	19.54	1.38%	Linalool	1099.00	Monoterpenol
19	21.32	2.83%	Camphor	1147.55	Monoterpene Ketone
20	22.18	0.32%	Borneol	1168.71	Monoterpenol
21	22.63	5.29%	Terpinen-4-ol	1180.57	Monoterpenol
22	23.10	1.75%	alpha-Terpineol	1191.71	Monoterpenol
23	23.33	0.10%	gamma-Terpineol	1198.50	Monoterpenol
24	24.92	8.28%	Neral	1246.57	Monoterpene Aldehyde
25	25.39	0.72%	Geraniol	1255.29	Monoterpenol
26	26.02	14.95%	Geranial	1272.00	Monoterpene Aldehyde
27	26.12	1.56%	(E)-Cinnamaldehyde	1267.67	Phenylpropanoid
28	26.51	0.24%	Bornyl acetate	1288.29	Monoterpene Ester
29	26.75	2.18%	Thymol	1288.15	Monoterpenol
30	27.14	5.82%	Carvacrol	1304.40	Monoterpenol
31	29.07	13.59%	Eugenol	1365.89	Phenylpropanoid
32	29.68	1.07%	Geranyl acetate	1379.20	Monoterpene Ester
33	31.12	1.68%	beta-Caryophyllene	1427.14	Sesquiterpene
34	31.73	0.11%	beta-Gurjunene	1433.00	Sesquiterpene
35	31.77	0.16%	beta-Copaene	1445.00	Sesquiterpene
36	32.18	0.20%	alpha-Humulene	1461.43	Sesquiterpene
37	34.02	0.16%	delta-Amorphene	1510.10	Sesquiterpene
38	34.23	2.28%	Eugenyl acetate	1524.75	Phenylpropanoid Ester
39	36.15	0.32%	(E)-Nerolidol	1567.00	Sesquiterpenol