



*Essential Validation Services*



**Nature's** FUSIONS  
ESSENTIAL OILS

### Sample:

---

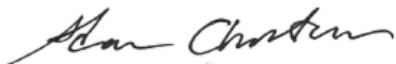
Client: | Nature's Fusions  
Sample: | Pink Flowers (Monthly Feminine)  
Batch # | NF-NF.PINK-18-A  
CAS Number |  
Type: | Blend

---

### Conclusion:

- No adulterants, diluents, or contaminants were detected via this method.
- This oil meets the expected profile for genuine oil of Pink Flowers (Monthly Feminine).

X



Validated By:



Essential Validation Services

747 SW 2nd Ave, Gainesville, FL 32601

Phone: 317-361-5044 E-mail: Adam@essentialvalidationservices.com

### Summary of Analyses

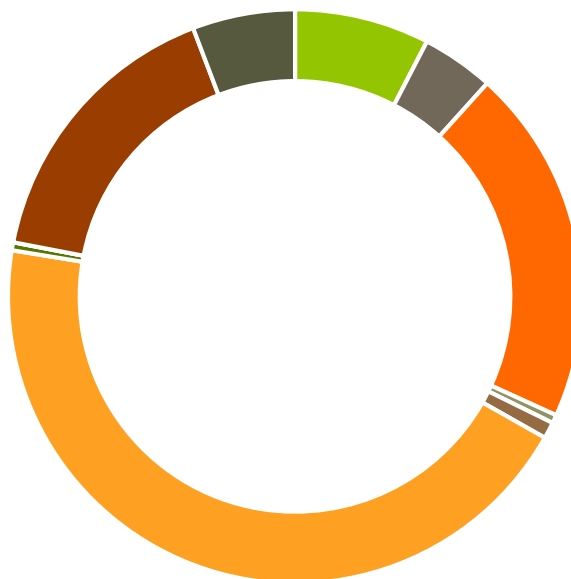
---

A fresh sample of Pink Flowers (Monthly Feminine) (10 uL in .5to.5 mL Hexane + ETOH) was prepared and analyzed via split injection GC/EI-MS.



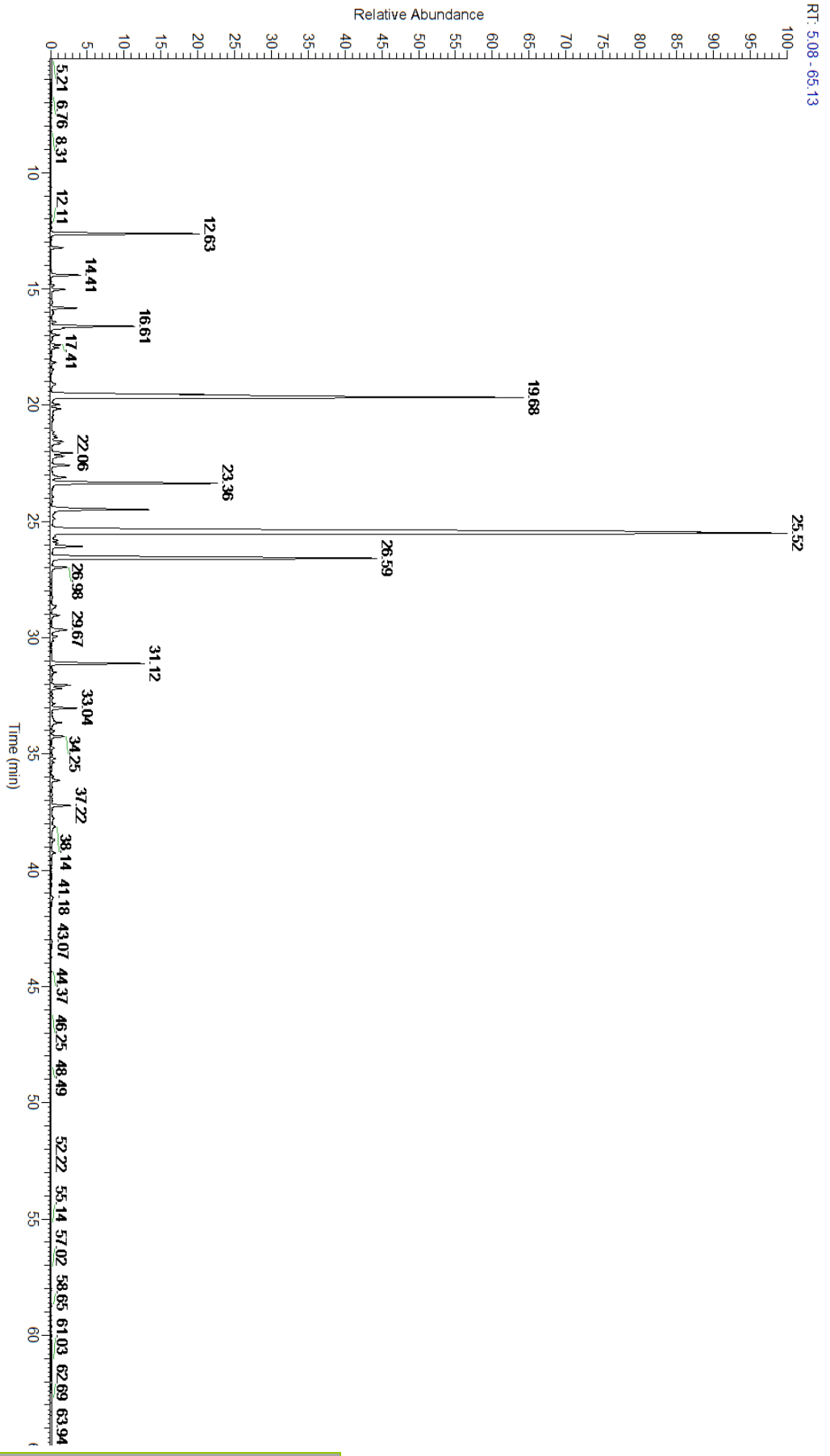
Main Compounds	Percentages
Linalyl acetate	42.39%
Linalool	16.07%
(E)-Anethole	11.55%
Methyl chavicol	4.41%
alpha-Pinene	3.27%
Citronellol	2.82%
beta-Caryophyllene	2.30%
Limonene	2.03%
Citronellyl formate	0.81%
Sabinene	0.65%
delta-3-Carene	0.59%
alpha-Copaene	0.52%
Isomenthone	0.48%

Monoterpenes	Sesquiterpenes	Monoterpenols	Sesquiterpenols	Ketones
7.60%	4.08%	20.12%	0.47%	0.93%
Esters	Ethers	Aldehydes	Phenols	Other
44.37%	0.45%	0.00%	16.20%	5.78%



- Monoterpenes
- Sesquiterpenes
- Monoterpenols
- Sesquiterpenols
- Ketones
- Esters
- Ethers
- Phenols
- Other

ESSENTIAL VALIDATION SERVICES | 747 SW 2<sup>ND</sup> AVE GAINESVILLE, FLORIDA 32601 | 317-361-5044



ESSENTIAL VALIDATION SERVICES | 747 SW 2<sup>ND</sup> AVE GAINESVILLE, FLORIDA 32601 | 317-361-5044



ESSENTIAL VALIDATION SERVICES | 747 SW 2<sup>ND</sup> AVE GAINESVILLE, FLORIDA 32601 | 317-361-5044

Total Percentage		94.22%			
Peak Number	RT	Area %	Compound Name	RI	Chemical Family
1	Apex RT	Co-Eluting			
2	12.63	3.27%	alpha-Pinene	936.10	Monoterpene
3	13.23	0.27%	Camphene	950.30	Monoterpene
4	14.41	0.65%	Sabinene	973.00	Monoterpene
5	14.85	0.06%	Octan-3-one	981.00	Aliphatic Ketone
6	15.03	0.30%	Myrcene	989.20	Monoterpene
7	15.58	0.02%	alpha-Phellandrene	1002.00	Monoterpene
8	15.82	0.59%	delta-3-Carene	1008.00	Monoterpene
9	15.97	0.04%	Hexyl acetate	1009.00	Aliphatic Ester
10	16.07	0.05%	2-Methylbutyl isobutyrate	1013.00	Aliphatic Ester
11	16.42	0.09%	para-Cymene	1024.30	Monoterpene
12	16.61	2.03%	Limonene	1029.50	Monoterpene
13	16.69	0.18%	1,8-Cineole	1031.80	Monoterpene Ether
14	16.98	0.19%	(Z)-beta-Ocimene	1037.80	Monoterpene
15	17.41	0.19%	(E)-beta-Ocimene	1047.70	Monoterpene
16	17.54	0.17%	Isobutyl angelate	1053.75	Aliphatic Ester
17	18.16	0.10%	Artemisia ketone	1057.00	Monoterpene Ketone
18	19.68	16.07%	Linalool	1099.00	Monoterpenol
19	19.97	0.16%	cis-Rose oxide	1110.00	Monoterpene Ether
20	20.15	0.24%	2-Phenylethanol	1116.30	Simple Phenolic
21	21.31	0.11%	Camphor	1147.55	Monoterpene Ketone
22	21.40	0.11%	Isoamyl angelate	1154.75	Aliphatic Ester
23	21.57	0.25%	Isoamyl tiglate	1152.50	Aliphatic Ester
24	21.66	0.18%	Menthone	1155.00	Monoterpene Ketone
25	22.06	0.48%	Isomenthone	1164.33	Monoterpene Ketone
26	22.19	0.35%	Borneol	1168.71	Monoterpenol
27	22.58	0.45%	Terpinen-4-ol	1180.57	Monoterpenol
28	23.11	0.43%	alpha-Terpineol	1191.71	Monoterpenol
29	23.36	4.41%	Methyl chavicol	1193.40	Phenylpropanoid
30	24.50	2.82%	Citronellol	1229.25	Monoterpenol
31	25.44	42.39%	Linalyl acetate	1263.80	Monoterpene Ester
32	26.08	0.81%	Citronellyl formate	1279.00	Monoterpene Ester
33	26.59	11.55%	(E)-Anethole	1283.00	Phenylpropanoid
34	26.98	0.36%	Geranyl formate	1304.35	Monoterpene Ester
35	28.64	0.11%	alpha-Terpinyl acetate	1353.00	Monoterpene Ether
36	29.05	0.19%	Neryl acetate	1362.90	Monoterpene Ester
37	29.67	0.52%	alpha-Copaene	1379.00	Sesquiterpene
38	31.12	2.30%	beta-Caryophyllene	1427.14	Sesquiterpene
39	32.05	0.45%	(Z)-beta-Farnesene	1453.40	Sesquiterpene
40	32.18	0.25%	(E)-beta-Farnesene	1456.29	Sesquiterpene
41	33.65	0.23%	(Z,E)-alpha-Farnesene	1500.50	Sesquiterpene
42	34.25	0.33%	gamma-Cadinene	1515.29	Sesquiterpene
43	37.22	0.47%	gamma-Eudesmol	1608.00	Sesquiterpenol