



Essential Validation Services



Nature's FUSIONS
ESSENTIAL OILS



Sample:

Client: | Nature's Fusions
Sample: | Refreshing Wind (Alertness)
Batch # | NF-NF.REFR-18-A
CAS Number |
Type: | Blend

Conclusion:

- No adulterants, diluents, or contaminants were detected via this method.
- This oil meets the expected profile for genuine oil of Refreshing Wind (Alertness).

X 

Validated By:



Essential Validation Services

747 SW 2nd Ave, Gainesville, FL 32601

Phone: 317-361-5044 E-mail: Adam@essentialvalidationservices.com

Summary of Analyses

A fresh sample of Refreshing Wind (Alertness) (10 uL in .5to.5 mL Hexane + ETOH) was prepared and analyzed via split injection GC/EI-MS.



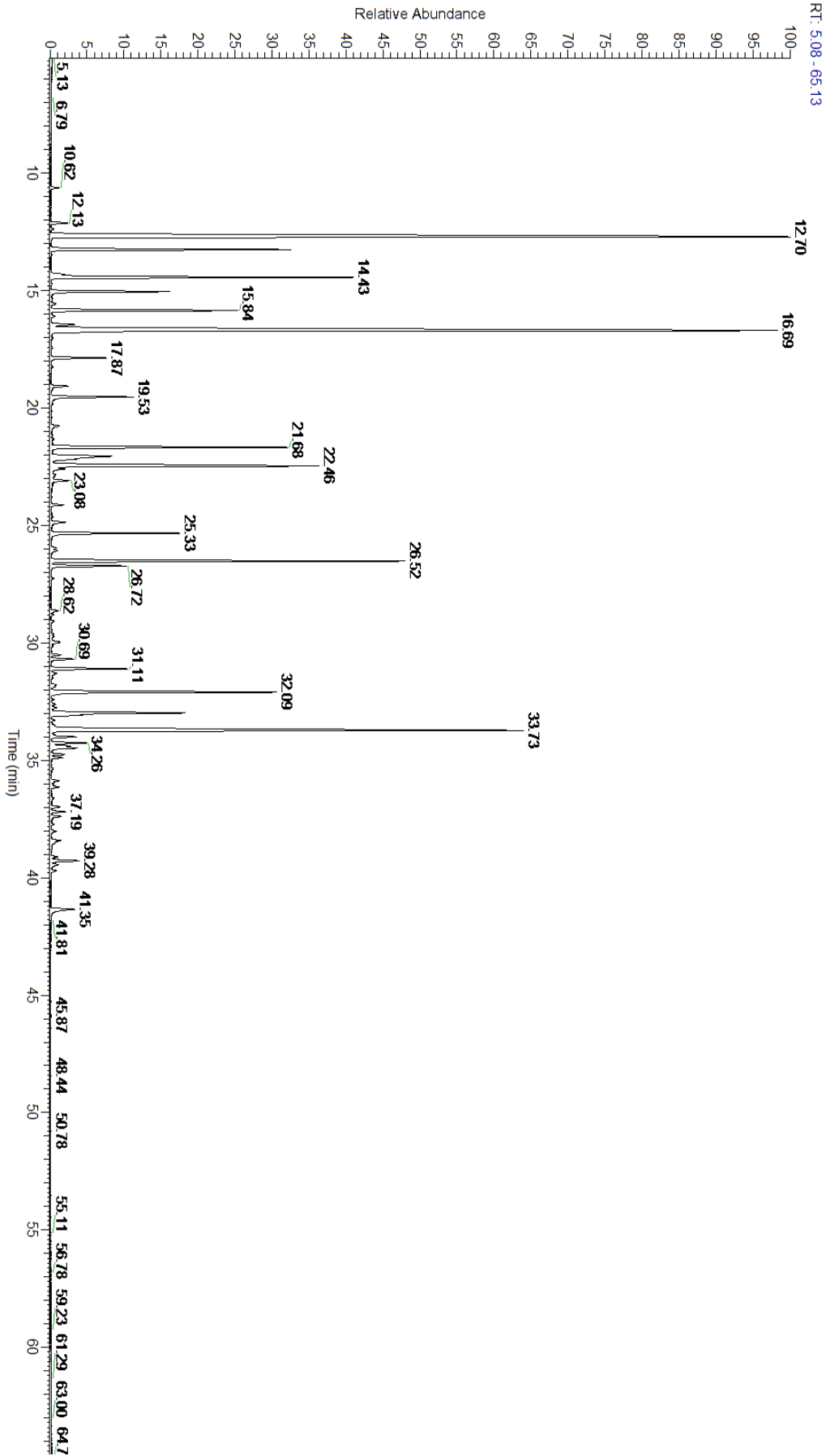
Main Compounds	Percentages
alpha-Pinene	19.24%
Limonene	17.55%
Germacrene D	9.93%
Bornyl acetate	5.90%
Menthol	5.19%
beta-Pinene	5.07%
Menthone	4.10%
Aromadendrene	4.09%
Camphene	3.78%
alpha-Phellandrene	3.00%
Alloaromadendrene	2.44%
Linalyl acetate	2.01%
Myrcene	1.81%

Monoterpenes	Sesquiterpenes	Monoterpenols	Sesquiterpenols	Ketones
52.57%	19.20%	7.01%	0.07%	6.40%
Esters	Ethers	Aldehydes	Phenols	Other
9.35%	0.13%	0.00%	0.00%	5.27%



- Monoterpenes ■ Sesquiterpenes ■ Monoterpenols
- Sesquiterpenols ■ Ketones ■ Esters
- Ethers ■ Phenols ■ Other

ESSENTIAL VALIDATION SERVICES | 747 SW 2ND AVE GAINESVILLE, FLORIDA 32601 | 317-361-5044



ESSENTIAL VALIDATION SERVICES | 747 SW 2ND AVE GAINESVILLE, FLORIDA 32601 | 317-361-5044



ESSENTIAL VALIDATION SERVICES | 747 SW 2ND AVE GAINESVILLE, FLORIDA 32601 | 317-361-5044

Total Percentage		94.84%			
Peak Number	RT	Area %	Compound Name	RI	Chemical Family
1	Apex RT	Co-Eluting			
2	10.62	0.11%	Santene	884.00	Normonoterpene
3	12.13	0.28%	alpha-Thujene	927.80	Monoterpene
4	12.36	0.03%	beta-Thujene	929.00	Monoterpene
5	12.70	19.24%	alpha-Pinene	936.10	Monoterpene
6	13.25	3.78%	Camphene	950.30	Monoterpene
7	14.30	0.19%	Sabinene	973.00	Monoterpene
8	14.43	5.07%	beta-Pinene	974.00	Monoterpene
9	15.04	1.81%	Myrcene	989.20	Monoterpene
10	15.84	3.00%	alpha-Phellandrene	1002.00	Monoterpene
11	16.44	0.44%	para-Cymene	1024.30	Monoterpene
12	16.69	Co-Eluting	1,8-Cineole	1031.80	Monoterpene Ether
13	16.69	Co-Eluting	beta-Phellandrene	1030.00	Monoterpene
14	16.69	17.55%	Limonene	1029.50	Monoterpene
15	17.44	0.01%	(E)-beta-Ocimene	1047.70	Monoterpene
16	17.87	0.89%	gamma-Terpinene	1054.00	Monoterpene
17	18.23	0.01%	Artemisia ketone	1057.00	Monoterpene Ketone
18	19.07	0.28%	Terpinolene	1092.10	Monoterpene
19	19.53	1.35%	Linalool	1099.00	Monoterpenol
20	21.68	4.10%	Menthone	1155.00	Monoterpene Ketone
21	22.05	1.50%	Isomenthone	1164.33	Monoterpene Ketone
22	22.06	Co-Eluting	Menthofuran	1164.00	Monoterpene Ether
23	22.06	Co-Eluting	Neomenthol	1165.00	Monoterpenol
24	22.46	5.19%	Menthol	1177.40	Monoterpenol
25	22.60	0.19%	Terpinen-4-ol	1180.57	Monoterpenol
26	23.08	0.28%	alpha-Terpineol	1191.71	Monoterpenol
27	24.13	0.18%	Fenchyl acetate	1222.00	Monoterpene Ester
28	24.86	0.28%	Pulegone	1244.43	Monoterpene Ketone
29	25.33	2.01%	Linalyl acetate	1263.80	Monoterpene Ester
30	26.07	0.10%	Citronellyl formate	1279.00	Monoterpene Ester
31	26.52	5.90%	Bornyl acetate	1288.29	Monoterpene Ester
32	26.72	1.16%	Menthyl acetate	1297.00	Monoterpene Ester
33	28.62	0.13%	alpha-Terpinyl acetate	1353.00	Monoterpene Ether
34	31.11	1.22%	beta-Caryophyllene	1427.14	Sesquiterpene
35	32.09	4.09%	Aromadendrene	1449.80	Sesquiterpene
36	32.98	2.44%	Alloaromadendrene	1471.00	Sesquiterpene
37	33.06	0.33%	gamma-Curcumene	1476.00	Sesquiterpene
38	33.73	9.93%	Germacrene D	1484.71	Sesquiterpene
39	34.01	0.40%	alpha-Dehydro-ar-Himachalene	1516.00	Sesquiterpene
40	34.47	0.43%	gamma-Dehydro-ar-himachalene	1529.75	Sesquiterpene
41	34.75	0.20%	gamma-Vetivenene	1532.00	Sesquiterpene
42	34.88	0.16%	alpha-Calacorene	1537.14	Sesquiterpene
43	38.02	0.07%	T-Cadinol	1640.43	Sesquiterpenol
44	39.28	0.51%	Deodarone	1693.50	Sesquiterpene Ketone