



Essential Validation Services



Nature's FUSIONS
ESSENTIAL OILS

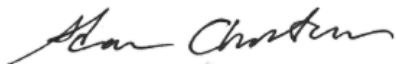
Sample:

Client: | Nature's Fusions
Sample: | Soothing (First Aid / Bruises & Cuts)
Batch # | NF-NF.SOOT-18-A
CAS Number |
Type: | Blend

Conclusion:

- No adulterants, diluents, or contaminants were detected via this method.
- This oil meets the expected profile for genuine oil of Soothing (First Aid / Bruises & Cuts).

X



Validated By:



Essential Validation Services

747 SW 2nd Ave, Gainesville, FL 32601

Phone: 317-361-5044 E-mail: Adam@essentialvalidationservices.com

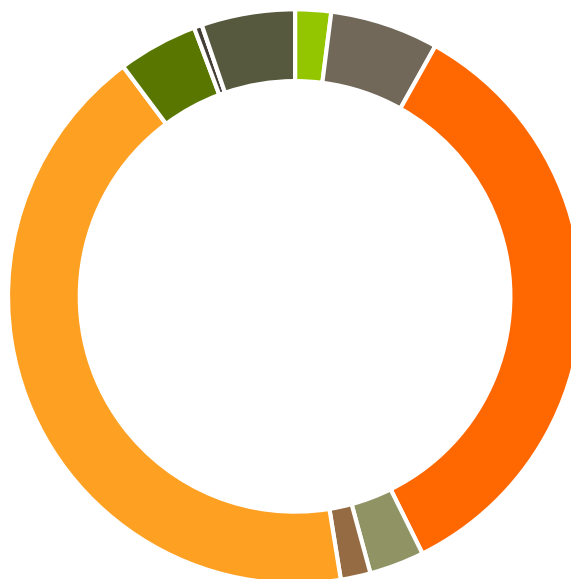
Summary of Analyses

A fresh sample of Soothing (First Aid / Bruises & Cuts) (10 uL in .5to.5 mL Hexane + ETOH) was prepared and analyzed via split injection GC/EI-MS.



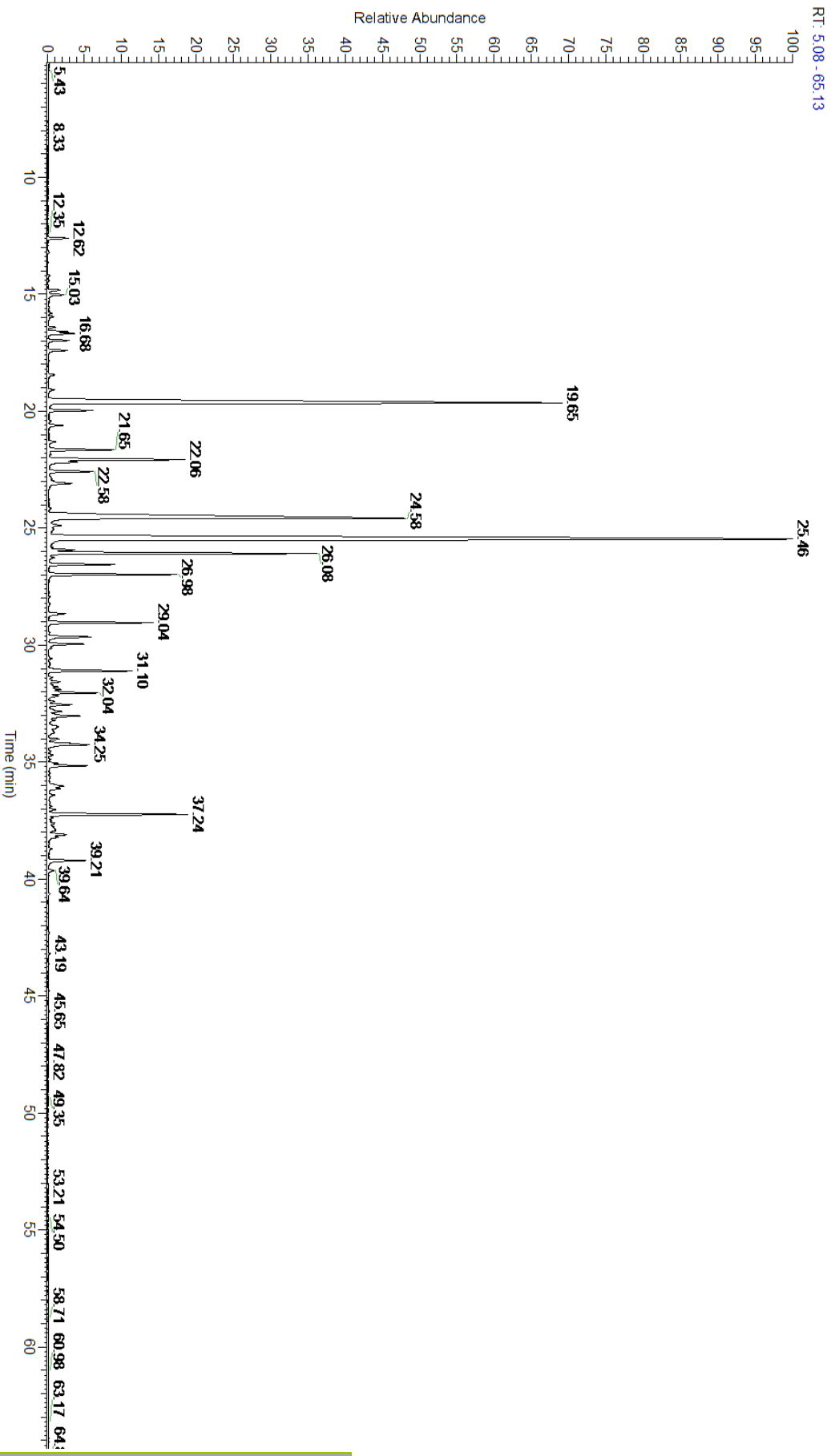
Main Compounds	Percentages
Linalyl acetate	28.66%
Linalool	17.74%
Citronellol	14.69%
Citronellyl formate	5.05%
gamma-Eudesmol	2.93%
Menthofuran (Co-Eluting)	2.92%
Geranyl formate	2.42%
Neryl acetate	1.93%
beta-Caryophyllene	1.79%
Menthone	1.30%
gamma-Cadinene	1.24%
Lavandulyl acetate	1.19%
(Z)-beta-Farnesene	1.03%

Monoterpenes	Sesquiterpenes	Monoterpenols	Sesquiterpenols	Ketones
2.02%	6.11%	34.55%	3.09%	1.68%
Esters	Ethers	Aldehydes	Phenols	Other
42.33%	4.50%	0.45%	0.00%	5.27%



- Monoterpenes
- Sesquiterpenes
- Monoterpenols
- Sesquiterpenols
- Ketones
- Esters
- Ethers
- Phenols
- Other

ESSENTIAL VALIDATION SERVICES | 747 SW 2ND AVE GAINESVILLE, FLORIDA 32601 | 317-361-5044





Total Percentage		94.73%			
Peak Number	RT	Area %	Compound Name	RI	Chemical Family
1	12.62	0.36%	alpha-Pinene	936.10	Monoterpene
2	13.22	0.02%	Camphene	950.30	Monoterpene
3	14.20	0.02%	Sabinene	973.00	Monoterpene
4	14.41	0.01%	beta-Pinene	974.00	Monoterpene
5	14.82	0.23%	Octan-3-one	981.00	Aliphatic Ketone
6	15.03	0.31%	Myrcene	989.20	Monoterpene
7	15.81	0.06%	alpha-Phellandrene	1002.00	Monoterpene
8	15.97	0.09%	Hexyl acetate	1009.00	Aliphatic Ester
9	16.41	0.12%	para-Cymene	1024.30	Monoterpene
10	16.60	0.36%	Limonene	1029.50	Monoterpene
11	16.68	0.52%	1,8-Cineole	1031.80	Monoterpene Ether
12	16.97	0.39%	(Z)-beta-Ocimene	1037.80	Monoterpene
13	17.40	0.37%	(E)-beta-Ocimene	1047.70	Monoterpene
14	19.65	17.74%	Linalool	1099.00	Monoterpenol
15	19.96	0.79%	cis-Rose oxide	1110.00	Monoterpene Ether
16	20.61	0.27%	trans-Rose oxide	1127.33	Monoterpene Ether
17	21.31	0.15%	Camphor	1147.55	Monoterpene Ketone
18	21.65	1.30%	Menthone	1155.00	Monoterpene Ketone
19	22.06	2.92%	Menthofuran	1164.00	Monoterpene Ether
20	22.07	Co-Eluting	Isomenthone	1164.33	Monoterpene Ketone
21	22.07	Co-Eluting	Neomenthol	1165.00	Monoterpenol
22	22.18	0.64%	Borneol	1168.71	Monoterpenol
23	22.58	0.87%	Terpinen-4-ol	1180.57	Monoterpenol
24	22.93	0.01%	Hexyl butyrate	1186.80	Aliphatic Ester
25	23.08	0.61%	alpha-Terpineol	1191.71	Monoterpenol
26	24.58	14.69%	Citronellol	1229.25	Monoterpenol
27	25.46	28.66%	Linalyl acetate	1263.80	Monoterpene Ester
28	25.93	0.45%	Geranial	1272.00	Monoterpene Aldehyde
29	26.08	5.05%	Citronellyl formate	1279.00	Monoterpene Ester
30	26.55	1.19%	Lavandulyl acetate	1285.00	Monoterpene Ester
31	26.98	2.42%	Geranyl formate	1304.35	Monoterpene Ester
32	28.65	0.42%	Citronellyl acetate	1357.83	Monoterpene Ester
33	29.04	1.93%	Neryl acetate	1362.90	Monoterpene Ester
34	29.65	0.96%	Geranyl acetate	1379.20	Monoterpene Ester
35	29.96	0.74%	beta-Bourbonene	1388.70	Sesquiterpene
36	30.12	0.04%	Longifolene	1403.83	Sesquiterpene
37	31.10	1.79%	beta-Caryophyllene	1427.14	Sesquiterpene
38	31.56	0.16%	Citronellyl propionate	1444.00	Monoterpene Ester
39	31.79	0.13%	beta-Copaene	1445.00	Sesquiterpene
40	31.90	0.21%	Neryl propionate	1448.50	Monoterpene Ester
41	32.04	1.03%	(Z)-beta-Farnesene	1453.40	Sesquiterpene
42	32.18	0.19%	alpha-Humulene	1461.43	Sesquiterpene
43	32.55	0.44%	Geranyl propionate	1477.33	Monoterpene Ester



44	33.03	0.83%	gamma-Muurolene	1478.86	Sesquiterpene
45	33.21	0.12%	Germacrene D	1484.71	Sesquiterpene
46	33.75	0.15%	epi-Cubebol	1493.67	Sesquiterpenol
47	34.25	1.24%	gamma-Cadinene	1515.29	Sesquiterpene
48	35.16	0.75%	Geranyl isobutanoate		
49	36.03	0.44%	2-Phenyl ethyl tiglate		
50	37.24	2.93%	gamma-Eudesmol	1608.00	Sesquiterpenol
51	37.50	0.01%	10-epi-gamma-Eudesmol	1620.00	Sesquiterpenol
52	39.21	0.79%	Geranyl tiglate	1700.30	Monoterpene Ester

ESSENTIAL VALIDATION SERVICES | 747 SW 2ND AVE GAINESVILLE, FLORIDA 32601 | 317-361-5044