



Essential Validation Services



Nature's FUSIONS
ESSENTIAL OILS



Sample:

Client: | Nature's Fusions
Sample: | Volcano (Skin Warming / Circulation)
Batch # | NF-NF.VOLC-18-A
CAS Number |
Type: | Blend

Conclusion:

- No adulterants, diluents, or contaminants were detected via this method.
- This oil meets the expected profile for genuine oil of Volcano (Skin Warming / Circulation).

X

Validated By:



Essential Validation Services

747 SW 2nd Ave, Gainesville, FL 32601

Phone: 317-361-5044 E-mail: Adam@essentialvalidationservices.com

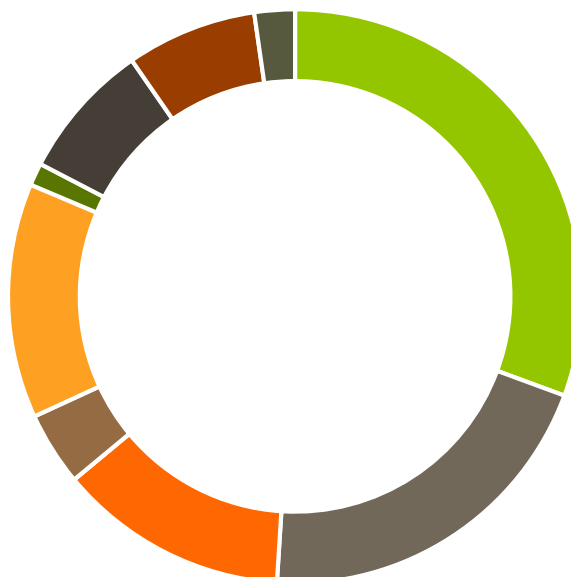
Summary of Analyses

A fresh sample of Volcano (Skin Warming / Circulation) (10 uL in .5to.5 mL Hexane + ETOH) was prepared and analyzed via split injection GC/EI-MS.



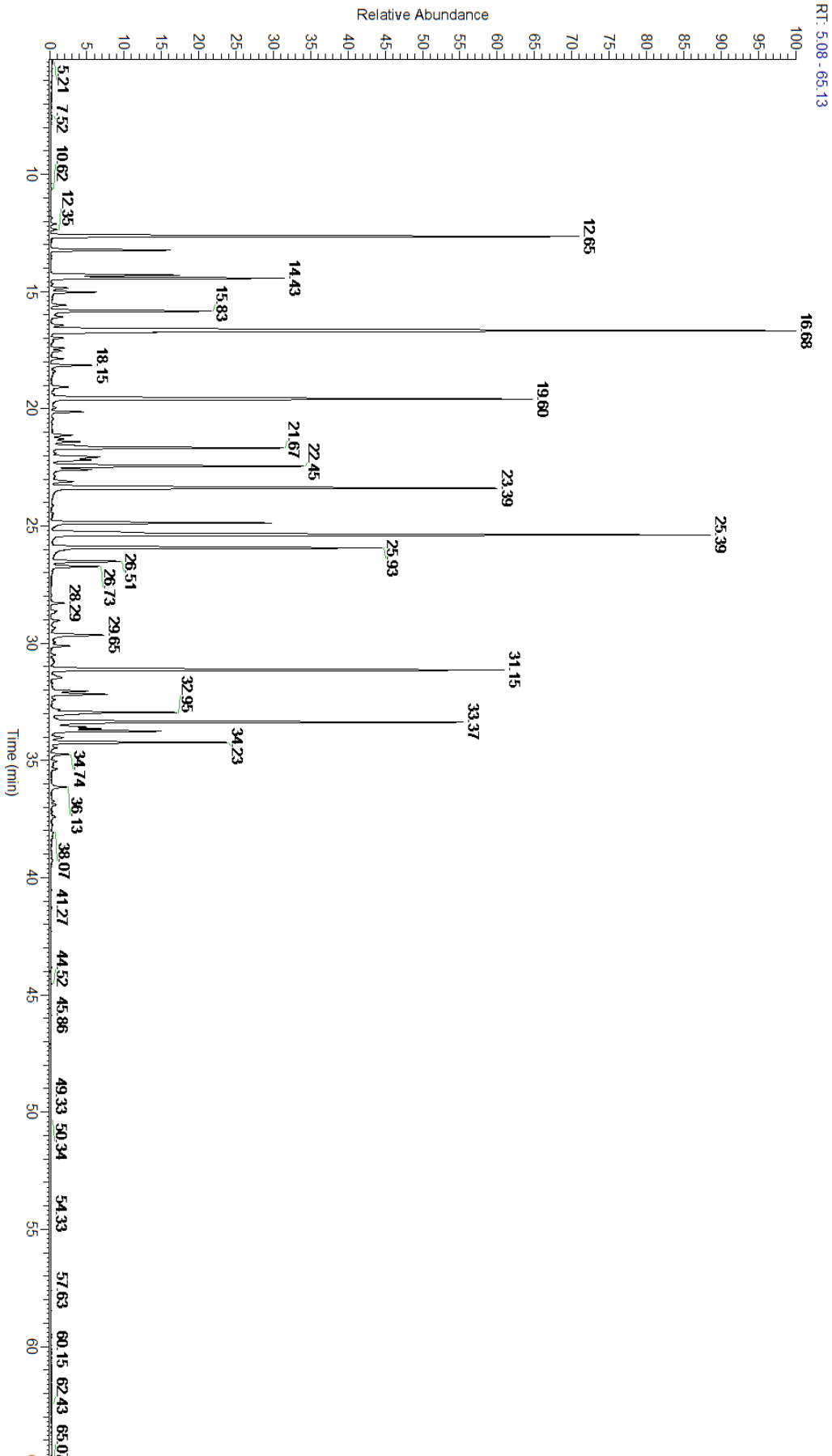
Main Compounds	Percentages
Limonene	13.22%
Linalyl acetate	10.21%
Linalool	7.72%
Methyl chavicol	7.35%
alpha-Pinene	7.11%
beta-Caryophyllene	6.57%
alpha-Zingiberene	5.60%
Geranial	4.67%
Menthol	3.69%
Menthone	3.40%
Neral	3.07%
beta-Pinene	2.93%
beta-Bisabolene	2.26%

Monoterpenes	Sesquiterpenes	Monoterpenols	Sesquiterpenols	Ketones
30.62%	20.39%	12.97%	0.00%	4.15%
Esters	Ethers	Aldehydes	Phenols	Other
13.23%	1.27%	7.74%	7.35%	2.28%



- Monoterpenes
- Sesquiterpenes
- Monoterpenols
- Sesquiterpenols
- Ketones
- Esters
- Ethers
- Phenols
- Other

ESSENTIAL VALIDATION SERVICES | 747 SW 2ND AVE GAINESVILLE, FLORIDA 32601 | 317-361-5044





ESSENTIAL VALIDATION SERVICES | 747 SW 2ND AVE GAINESVILLE, FLORIDA 32601 | 317-361-5044

Total Percentage		98.08%			
Peak Number	RT	Area %	Compound Name	RI	Chemical Family
1	12.12	0.05%	Tricyclene	923.00	Monoterpene
2	12.35	0.06%	beta-Thujene	929.00	Monoterpene
3	12.65	7.11%	alpha-Pinene	936.10	Monoterpene
4	13.23	1.50%	Camphene	950.30	Monoterpene
5	14.30	1.72%	Sabinene	973.00	Monoterpene
6	14.43	2.93%	beta-Pinene	974.00	Monoterpene
7	14.84	0.23%	3-Octanone	981.00	Aliphatic Ketone
8	15.03	0.53%	Myrcene	989.20	Monoterpene
9	15.58	0.19%	alpha-Phellandrene	1002.00	Monoterpene
10	15.83	2.08%	delta-3-Carene	1008.00	Monoterpene
11	16.44	0.16%	para-Cymene	1024.30	Monoterpene
12	16.68	13.22%	Limonene	1029.50	Monoterpene
13	16.74	0.43%	1,8-Cineole	1031.80	Monoterpene Ether
14	16.99	0.14%	(Z)-beta-Ocimene	1037.80	Monoterpene
15	17.41	0.16%	(E)-beta-Ocimene	1047.70	Monoterpene
16	17.53	0.12%	Isobutyl angelate	1053.75	Aliphatic Ester
17	17.86	0.14%	gamma-Terpinene	1054.00	Monoterpene
18	18.15	0.52%	Artemisia ketone	1057.00	Monoterpene Ketone
19	19.07	0.22%	Terpinolene	1092.10	Monoterpene
20	19.60	7.72%	Linalool	1099.00	Monoterpenol
21	20.13	0.36%	Undecane	1100.00	Alkane
22	21.13	0.25%	alpha-Pinocarveol	1143.75	Monoterpenol
23	21.41	0.34%	Isoamyl angelate	1154.75	Aliphatic Ester
24	21.67	3.40%	Menthone	1155.00	Monoterpene Ketone
25	22.06	0.84%	Menthofuran	1164.00	Monoterpene Ether
26	22.07	Co-Eluting	Isomenthone	1164.33	Monoterpene Ketone
27	22.07	Co-Eluting	Neomenthol	1165.00	Monoterpenol
28	22.19	0.54%	Borneol	1168.71	Monoterpenol
29	22.45	3.69%	Menthol	1177.40	Monoterpenol
30	22.59	0.48%	Terpinen-4-ol	1180.57	Monoterpenol
31	23.10	0.29%	alpha-Terpineol	1191.71	Monoterpenol
32	23.39	7.35%	Methyl chavicol	1193.40	Phenylpropanoid
33	24.87	3.07%	Neral	1246.57	Monoterpene Aldehyde
34	25.39	10.21%	Linalyl acetate	1263.80	Monoterpene Ester
35	25.93	4.67%	Geranial	1272.00	Monoterpene Aldehyde
36	26.51	1.02%	Bornyl acetate	1288.29	Monoterpene Ester
37	26.73	0.61%	Menthyl acetate	1297.00	Monoterpene Ester
38	28.29	0.15%	delta-Elemene	1335.83	Sesquiterpene
39	28.63	0.06%	alpha-Copaene	1379.00	Sesquiterpene
40	29.65	0.93%	Geranyl acetate	1379.20	Monoterpene Ester
41	30.12	0.26%	beta-Elemene	1389.20	Sesquiterpene
42	30.50	0.04%	Sesquithujene	1405.00	Sesquiterpene
43	31.15	6.57%	beta-Caryophyllene	1427.14	Sesquiterpene



44	31.47	0.07%	trans-alpha-Bergamotene	1435.00	Sesquiterpene
45	32.05	0.46%	(Z)-beta-Farnesene	1453.40	Sesquiterpene
46	32.18	0.75%	alpha-Humulene	1461.43	Sesquiterpene
47	32.84	0.08%	Allo-Aromadendrene	1471.00	Sesquiterpene
48	32.95	1.84%	ar-Curcumene	1480.50	Sesquiterpene
49	33.37	5.60%	alpha-Zingiberene	1491.75	Sesquiterpene
50	33.57	0.41%	1-epi-Bicyclosesquiphellandrene	1489.25	Monoterpene
51	33.65	0.58%	(Z,E)-alpha-Farnesene	1500.50	Sesquiterpene
52	33.75	1.39%	cis-alpha-Bisabolene	1502.00	Sesquiterpene
53	34.23	2.26%	beta-Bisabolene	1509.86	Sesquiterpene
54	34.46	0.05%	delta-Cadinene	1524.14	Sesquiterpene
55	34.74	0.23%	epi-alpha-Selinene	1520.33	Sesquiterpene

ESSENTIAL VALIDATION SERVICES | 747 SW 2ND AVE GAINESVILLE, FLORIDA 32601 | 317-361-5044