



Essential Validation Services



Sample:

Client: | Nature's Fusions
Sample: | Anise Star (*Illicium verum*)
Batch # | 1604932
Cas Number | 8007-70-3
Type: | Essential Oil

Conclusion:

- No adulterants, diluents, or contaminants were detected via this method.



X 

Validated By:

Essential Validation Services

747 SW 2nd Ave, Gainesville, FL 32601

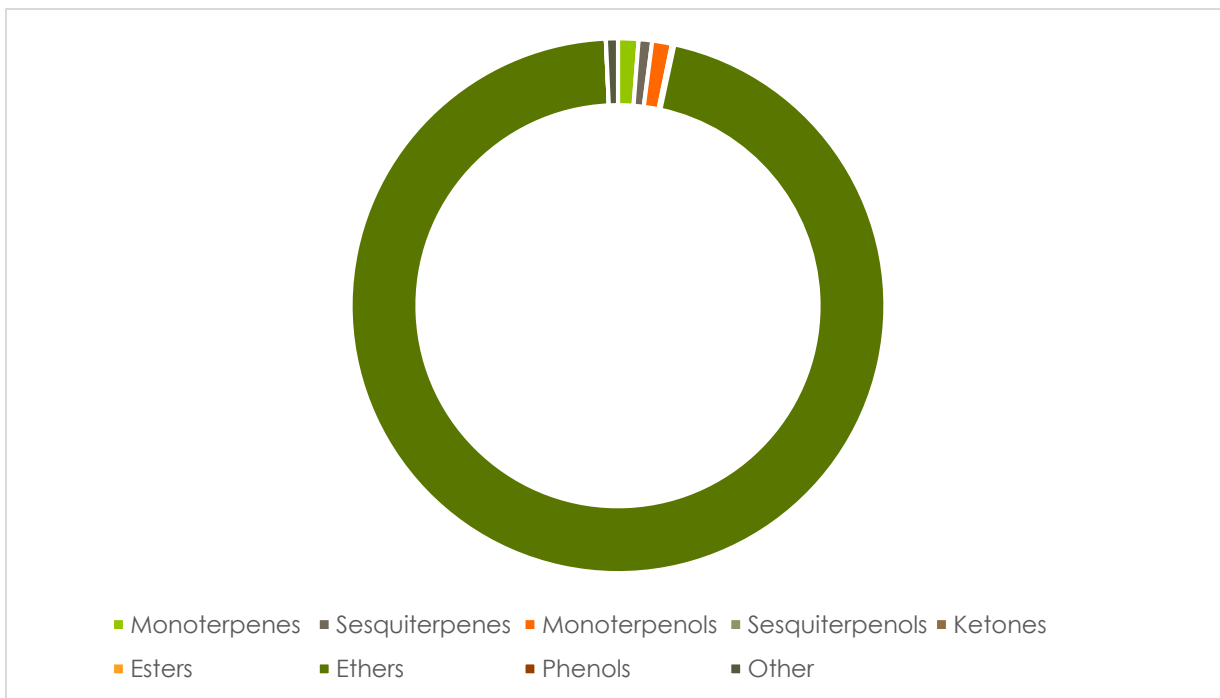
Phone: 317-361-5044 E-mail: Adam@essentialvalidationservices.com

Summary of Analyses

A fresh sample of Anise Star (*Illicium verum*) Essential Oil (10 uL in .5to.5 mL Hexane + ETOH) was prepared and analyzed via split injection GC/EI-MS.

Main Compounds	Percentages
(E)-Anethole	87.00%
Methyl chavicol	4.58%
Foeniculin	1.67%
Linalool	0.91%
Anisaldehyde	0.75%
Unknown (Mass 164)	0.71%

Monoterpenes	Sesquiterpenes	Monoterpenols	Sesquiterpenols	Ketones
1.20%	0.80%	1.16%	0.15%	0.00%
Esters	Ethers	Aldehydes	Phenols	Other
0.00%	93.62%	0.00%	1.09%	0.71%





RT: 9.24 - 28.44

