

Client

**Nature's FUSIONS**  
ESSENTIAL OILS

Source

*Basil (Ocimum basilicum)*  
NF-BASI-19-B

Sample

**Basil (Ocimum basilicum)**

Batch #:..... | NF-BASI-19-B

Type:..... | Essential Oil

CAS Number:... | 8015-73-4

**Nature's Fusions**

Client

**Nature's FUSIONS**  
ESSENTIAL OILS

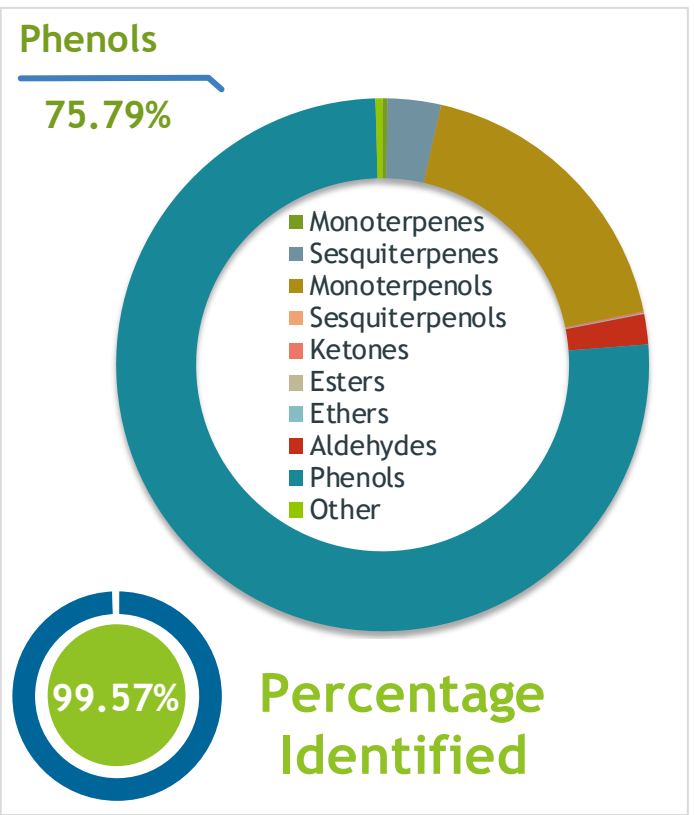
Website

Primary

75.79% | Methyl chavicol

18.13% | Linalool

1.54% | trans-gamma-Bisabolene



Result

Conclusion

No adulterants, diluents, or contaminants were detected via this method. This oil meets the expected profile for genuine essential oil of Basil (Ocimum basilicum)

Internal Number: | EVS-2957

*Essential Validation Services*

747 SW 2nd Ave IMB 12 Suite 306  
Gainesville, FL 32601

317.361.5044 |  
<https://essentialvalidationservices.com/>

adam@essentialvalidationservices.com

Monoterpenes	0.31%
Sesquiterpenes	3.22%
Monoterpenols	18.26%
Sesquiterpenols	0.00%
Ketones	0.10%
Esters	0.00%
Ethers	0.06%
Aldehydes	1.83%
Phenols	75.79%
Other	0.43%

ESSENTIAL VALIDATION SERVICES | 747 SW 2<sup>ND</sup> AVE GAINESVILLE, FLORIDA 32601 | 317-361-5044

Client


 Nature's FUSIONS  
 ESSENTIAL OILS

Source


*Basil (Ocimum basilicum)*  
 NF-BASI-19-B

Total Percentage		99.57%			
Number	RT	Area %	Compound Name	RI	Chemical Family
1	12.71	0.05%	alpha-Pinene	936.10	Monoterpene
2	14.93	0.10%	6-Methyl-5-hepten-2-one	982.00	Aliphatic Ketone
3	15.11	0.03%	Myrcene	989.20	Monoterpene
4	16.70	0.03%	Limonene	1029.50	Monoterpene
5	16.80	0.06%	1,8-Cineole	1031.80	Monoterpene Ether
6	17.49	0.20%	(E)-beta-Ocimene	1047.70	Monoterpene
7	19.16	0.03%	cis-Sabinene hydrate	1094.50	Monoterpenol
8	19.68	18.13%	Linalool	1099.00	Monoterpenol
9	23.23	0.10%	Terpinen-4-ol	1180.57	Monoterpenol
10	23.64	75.79%	Methyl chavicol	1193.40	Phenylpropanoid
11	24.95	0.77%	Neral	1246.57	Monoterpene Aldehyde
12	25.97	1.06%	Geranial	1272.00	Monoterpene Aldehyde
13	31.22	0.36%	beta-Caryophyllene	1427.14	Sesquiterpene
14	31.60	0.44%	trans-alpha-Bergamotene	1435.00	Sesquiterpene
15	31.82	0.04%	(Z)-beta-Farnesene	1453.40	Sesquiterpene
16	32.15	0.28%	(E)-beta-Farnesene	1456.29	Sesquiterpene
17	32.30	0.20%	alpha-Humulene	1461.43	Sesquiterpene
18	33.15	0.36%	Germacrene D	1484.71	Sesquiterpene
19	34.85	1.54%	trans-gamma-Bisabolene	1535.65	Sesquiterpene

Client



Source



*Basil (Ocimum basilicum)*  
*NF-BASI-19-B*

Number	RT	Area %	Compound Name	RI	Chemical Family

ESSENTIAL VALIDATION SERVICES | 747 SW 2<sup>ND</sup> AVE GAINESVILLE, FLORIDA 32601 | 317-361-5044