



## *Essential Validation Services*



## Sample:

---

Client: | Nature's Fusions  
Sample: | Bergamot Bergaptene Free (Citrus bergamia)  
Batch # | BERB18B  
CAS Number | 8007-75-8  
Type: | Essential Oil

---

## Conclusion:

- No adulterants, diluents, or contaminants were detected via this method.
- This oil meets the expected profile for genuine essential oil of Bergamot Bergaptene Free (Citrus bergamia).



X

A handwritten signature in black ink that reads "Adam Christen".

Validated By:

Essential Validation Services

747 SW 2nd Ave, Gainesville, FL 32601

Phone: 317-361-5044 E-mail: Adam@essentialvalidationservices.com

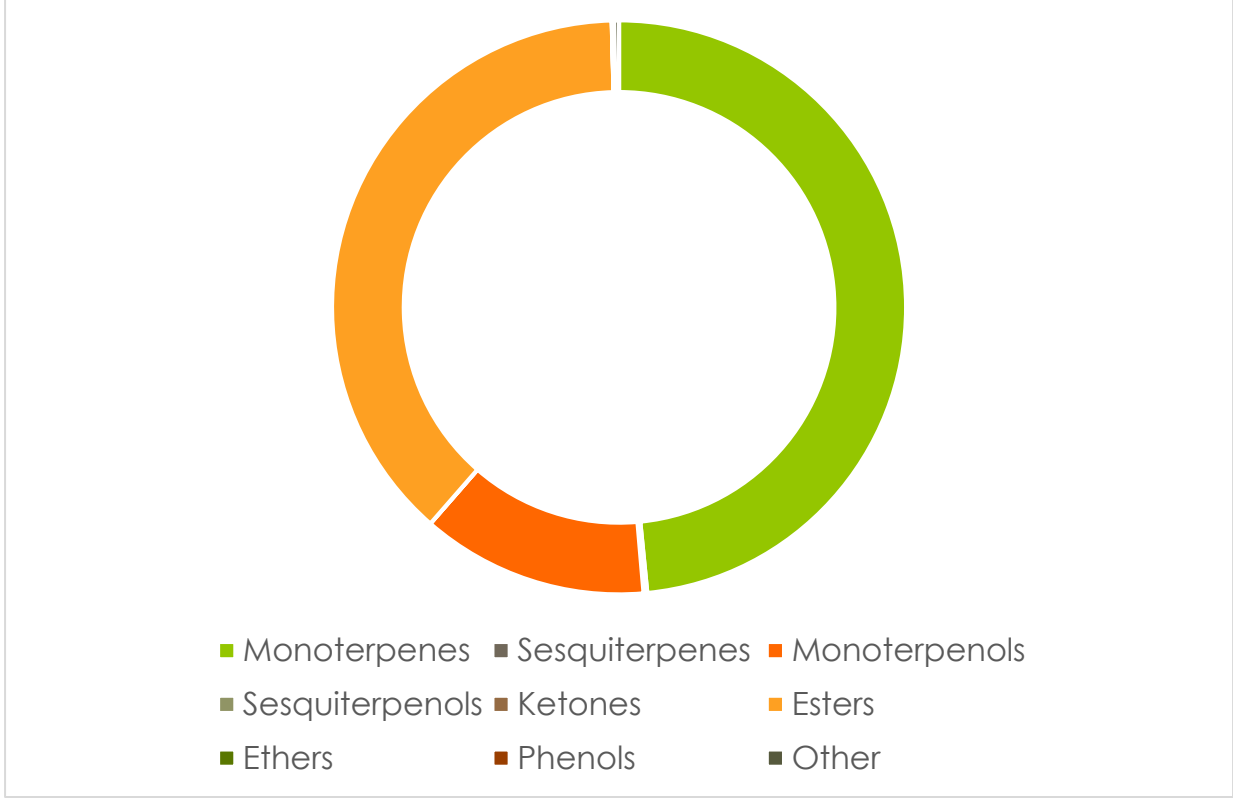
## Summary of Analyses

---

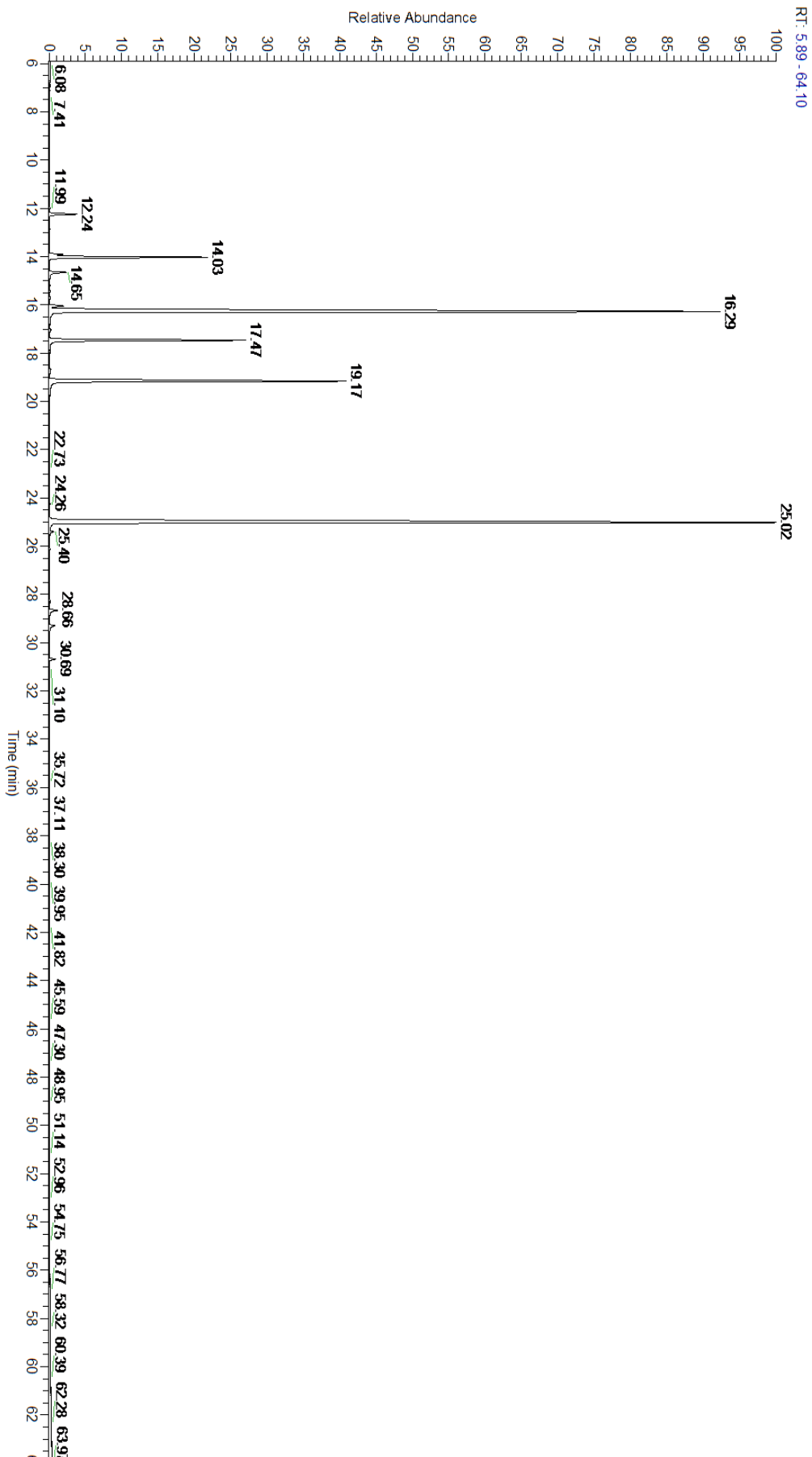
A fresh sample of Bergamot (Citrus bergamia) Essential Oil (10 uL in .5 to .5 mL Hexane + ETOH) was prepared and analyzed via split injection GC/EI-MS.

Main Compounds	Percentages
Linalyl acetate	37.55%
Limonene (Co-Eluting)	33.19%
Linalool	12.74%
gamma-Terpinene	6.90%
beta-Pinene	5.52%
alpha-Pinene	0.92%
Myrcene	0.65%
para-Cymene	0.54%
Sabinene	0.46%
Neryl acetate	0.36%

Monoterpenes	Sesquiterpenes	Monoterpenols	Sesquiterpenols	Ketones
48.43%	0.21%	12.78%	0.00%	0.00%
Esters	Ethers	Aldehydes	Phenols	Other
38.17%	0.01%	0.13%	0.00%	0.27%



ESSENTIAL VALIDATION SERVICES | 747 SW 2<sup>ND</sup> AVE GAINESVILLE, FLORIDA 32601 | 317-361-5044



ESSENTIAL VALIDATION SERVICES | 747 SW 2ND AVE GAINESVILLE, FLORIDA 32601 | 317-361-5044

Total Percentage		99.73%			
Peak Number	RT	Area %	Compound Name	RI	Chemical Family
1	11.99	0.02%	alpha-Thujene	927.80	Monoterpene
2	12.24	0.92%	alpha-Pinene	936.10	Monoterpene
3	12.85	0.01%	Camphene	950.30	Monoterpene
4	13.91	0.46%	Sabinene	973.00	Monoterpene
5	14.03	5.52%	beta-Pinene	974.00	Monoterpene
6	14.65	0.65%	Myrcene	989.20	Monoterpene
7	15.20	0.02%	alpha-Phellandrene	1002.00	Monoterpene
8	15.44	0.03%	delta-3-Carene	1008.00	Monoterpene
9	15.72	0.04%	alpha-Terpinene	1014.00	Monoterpene
10	16.04	0.54%	para-Cymene	1024.30	Monoterpene
11	16.29	33.19%	Limonene	1029.50	Monoterpene
12	16.30	Co-Eluting	1,8-Cineole	1031.80	Monoterpene Ether
13	16.65	0.02%	(Z)-beta-Ocimene	1037.80	Monoterpene
14	17.04	0.06%	(E)-beta-Ocimene	1047.70	Monoterpene
15	17.47	6.90%	gamma-Terpinene	1054.00	Monoterpene
16	17.94	0.01%	cis-Linalool oxide (5) (furanoid)	1075.10	Monoterpenol
17	18.69	0.05%	Terpinolene	1092.10	Monoterpene
18	18.80	0.03%	trans-Linalool oxide (5) (furanoid)	1092.20	Monoterpenol
19	19.17	12.74%	Linalool	1099.00	Monoterpenol
20	23.43	0.02%	Octyl acetate	1211.00	Aliphatic Ester
21	25.02	37.55%	Linalyl acetate	1263.80	Monoterpene Ester
22	25.40	0.13%	Geranial	1272.00	Monoterpene Aldehyde
23	28.36	0.01%	alpha-Terpinyl acetate	1353.00	Monoterpene Ether
24	28.66	0.36%	Neryl acetate	1362.90	Monoterpene Ester
25	29.30	0.24%	Geranyl acetate	1379.20	Monoterpene Ester
26	30.69	0.20%	beta-Caryophyllene	1427.14	Sesquiterpene
27	31.10	0.01%	trans-alpha-Bergamotene	1435.00	Sesquiterpene