

Client

Nature's FUSIONS
ESSENTIAL OILS

Source

Pepper, Black (*Piper nigrum*)
NF-BLKP-19-A

Sample

Pepper, Black (*Piper nigrum*)

Batch #:..... | NF-BLKP-19-A

Type:..... | Essential Oil

CAS Number:... | 8006-82-4

Nature's Fusions

Client

Nature's FUSIONS
ESSENTIAL OILS

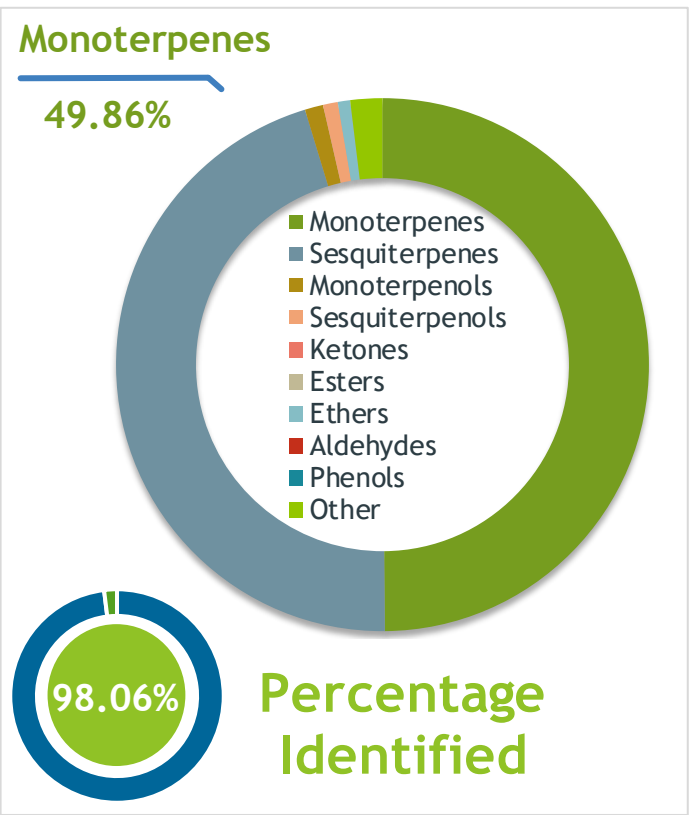
Website

Primary

26.23% | beta-Caryophyllene

11.68% | Limonene

11.39% | Sabinene



Result

Conclusion

No adulterants, diluents, or contaminants were detected via this method. This oil meets the expected profile for genuine essential oil of Pepper, Black (*Piper nigrum*)

Internal Number: | EVS-2901

Essential Validation Services

747 SW 2nd Ave IMB 12 Suite 306
Gainesville, FL 32601

317.361.5044 |
<https://essentialvalidationservices.com/>

adam@essentialvalidationservices.com

Monoterpenes	49.86%	49.86%
Sesquiterpenes	45.44%	45.44%
Monoterpenols	1.11%	1.11%
Sesquiterpenols	0.90%	0.90%
Ketones	0.00%	0.00%
Esters	0.00%	0.00%
Ethers	0.75%	0.75%
Aldehydes	0.00%	0.00%
Phenols	0.00%	0.00%
Other	1.94%	1.94%

ESSENTIAL VALIDATION SERVICES | 747 SW 2ND AVE GAINESVILLE, FLORIDA 32601 | 317-361-5044

Client


Nature's FUSIONS
 ESSENTIAL OILS

Source



Pepper, Black (Piper nigrum)
 NF-BLKP-19-A

Total Percentage		98.06%			
Number	RT	Area %	Compound Name	RI	Chemical Family
1	12.62	0.95%	alpha-Thujene	927.80	Monoterpene
2	12.90	10.18%	alpha-Pinene	936.10	Monoterpene
3	13.51	0.27%	Camphene	950.30	Monoterpene
4	14.60	11.39%	Sabinene	973.00	Monoterpene
5	14.72	8.23%	beta-Pinene	974.00	Monoterpene
6	15.28	1.23%	Myrcene	989.20	Monoterpene
7	15.85	0.85%	alpha-Phellandrene	1002.00	Monoterpene
8	16.11	3.60%	delta-3-Carene	1008.00	Monoterpene
9	16.37	0.17%	alpha-Terpinene	1014.00	Monoterpene
10	16.70	0.46%	para-Cymene	1024.30	Monoterpene
11	16.90	11.68%	Limonene	1029.50	Monoterpene
12	17.24	0.05%	(Z)-beta-Ocimene	1037.80	Monoterpene
13	17.67	0.10%	(E)-beta-Ocimene	1047.70	Monoterpene
14	18.12	0.32%	gamma-Terpinene	1054.00	Monoterpene
15	19.34	0.38%	Terpinolene	1092.10	Monoterpene
16	19.74	0.35%	Linalool	1099.00	Monoterpenol
17	21.36	0.03%	trans-Pinocarveol	1143.75	Monoterpenol
18	22.82	0.65%	Terpinen-4-ol	1180.57	Monoterpenol
19	23.31	0.08%	alpha-Terpineol	1191.71	Monoterpenol
20	28.57	2.76%	delta-Elemene	1335.83	Sesquiterpene
21	28.98	0.32%	alpha-Cubebene	1355.71	Sesquiterpene
22	29.61	0.13%	alpha-Ylangene	1371.33	Sesquiterpene
23	29.92	4.53%	alpha-Copaene	1379.00	Sesquiterpene
24	30.37	0.88%	beta-Cubebene	1390.50	Sesquiterpene
25	31.05	0.11%	alpha-Gurjunene	1412.00	Sesquiterpene
26	31.47	26.23%	beta-Caryophyllene	1427.14	Sesquiterpene
27	31.66	0.34%	beta-Copaene	1445.00	Sesquiterpene
28	32.29	0.32%	(Z)-beta-Farnesene	1453.40	Sesquiterpene
29	32.46	1.79%	alpha-Humulene	1461.43	Sesquiterpene
30	33.02	0.10%	Allo-aromadendrene	1471.00	Sesquiterpene
31	33.10	0.22%	gamma-Muurolene	1478.86	Sesquiterpene
32	33.29	0.27%	Germacrene D	1484.71	Sesquiterpene
33	33.48	0.37%	alpha-Selinene	1492.50	Sesquiterpene
34	33.83	1.42%	alpha-Muurolene	1500.25	Sesquiterpene
35	34.00	2.98%	beta-Bisabolene	1509.86	Sesquiterpene

 ESSENTIAL VALIDATION SERVICES | 747 SW 2ND AVE GAINESVILLE, FLORIDA 32601 | 317-361-5044

