



# *Essential Validation Services*





**Sample:**

---

Client: | Nature's Fusions  
Sample: | Cypress (Cupressus sempervirens)  
Batch # | L140283  
CAS Number | 8013-86-3  
Type: | Essential Oil

---

**Conclusion:**

- No adulterants, diluents, or contaminants were detected via this method.
- This oil meets the expected profile for genuine essential oil of Cypress (Cupressus sempervirens).

X 

---

Validated By:



Essential Validation Services

747 SW 2nd Ave, Gainesville, FL 32601

Phone: 317-361-5044 E-mail: Adam@essentialvalidationservices.com

**Summary of Analyses**

---

A fresh sample of Cypress (Cupressus sempervirens) Essential Oil (10 uL in .5to.5 mL Hexane + ETOH) was prepared and analyzed via split injection GC/EI-MS.



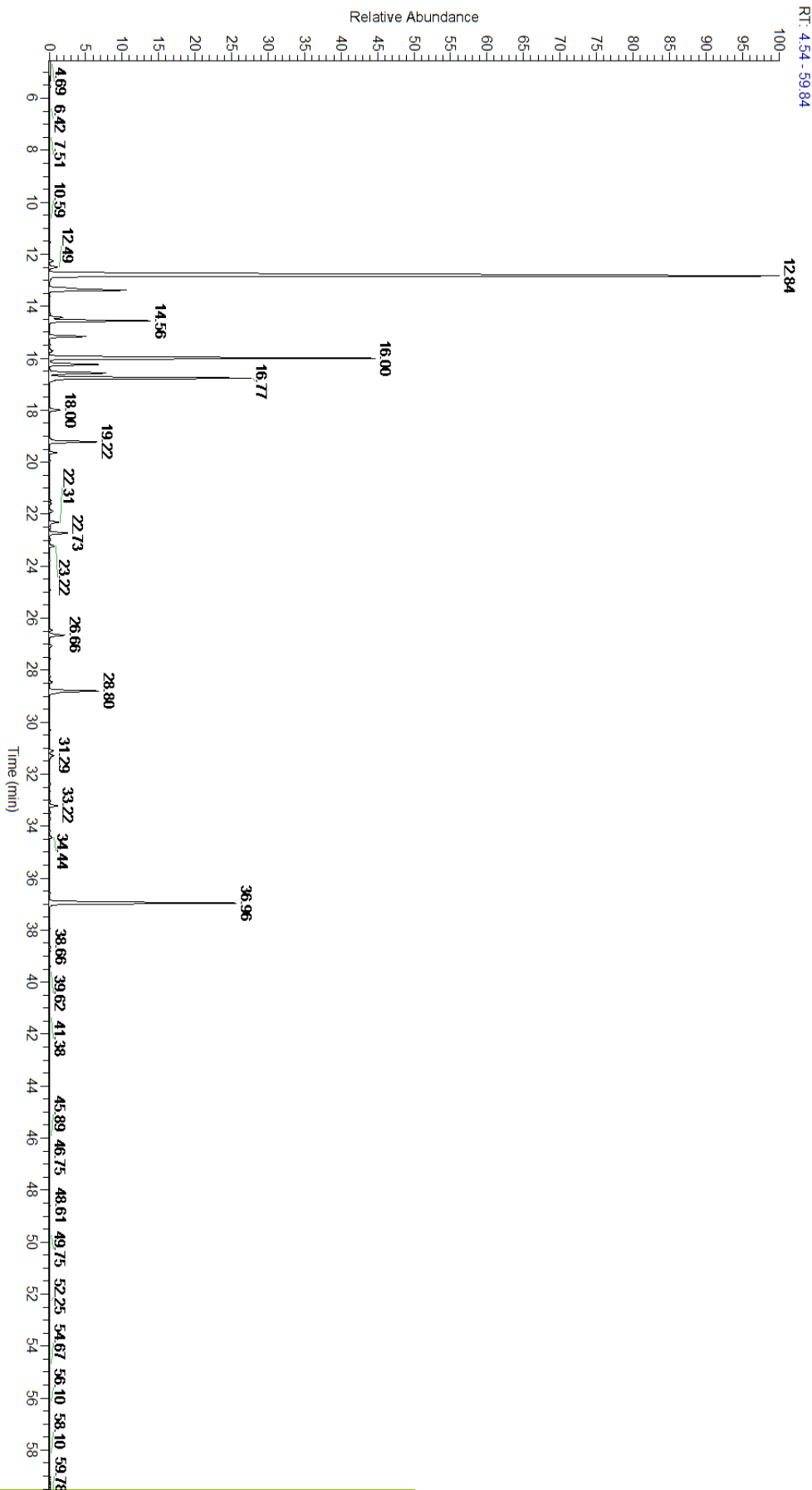
Main Compounds	Percentages
alpha-Pinene	43.61%
delta-3-Carene	14.57%
Cedrol	8.55%
Limonene (Co-Eluting)	8.54%
beta-Pinene	4.05%
Camphene	3.83%
para-Cymene	2.39%
alpha-Terpinyl acetate	2.31%
Terpinolene	2.07%
alpha-Terpinene	2.01%
Myrcene	1.41%
Terpinen-4-ol	0.82%
Bornyl acetate	0.70%

Monoterpenes	Sesquiterpenes	Monoterpenols	Sesquiterpenols	Ketones
84.23%	0.94%	1.77%	8.55%	0.23%
Esters	Ethers	Aldehydes	Phenols	Other
0.70%	2.31%	0.00%	0.00%	1.27%



- Monoterpenes
- Sesquiterpenes
- Monoterpenols
- Sesquiterpenols
- Ketones
- Esters
- Ethers
- Phenols
- Other

ESSENTIAL VALIDATION SERVICES | 747 SW 2<sup>ND</sup> AVE GAINESVILLE, FLORIDA 32601 | 317-361-5044



ESSENTIAL VALIDATION SERVICES | 747 SW 2<sup>ND</sup> AVE GAINESVILLE, FLORIDA 32601 | 317-361-5044



ESSENTIAL VALIDATION SERVICES | 747 SW 2<sup>ND</sup> AVE GAINESVILLE, FLORIDA 32601 | 317-361-5044

Total Percentage		98.73%			
Peak Number	RT	Area %	Compound Name	RI	Chemical Family
1	11.54	0.03%	Xi-Fenchene	910.50	Monoterpene
2	12.26	0.17%	Tricyclene	923.00	Monoterpene
3	12.49	0.38%	alpha-Thujene	927.80	Monoterpene
4	12.84	43.61%	alpha-Pinene	936.10	Monoterpene
5	13.38	3.83%	Camphene	950.30	Monoterpene
6	13.61	0.02%	Thuja-2,4(10)-diene	953.00	Monoterpene
7	14.43	0.54%	Sabinene	973.00	Monoterpene
8	14.56	4.05%	beta-Pinene	974.00	Monoterpene
9	15.17	1.41%	Myrcene	989.20	Monoterpene
10	15.72	0.14%	alpha-Phellandrene	1002.00	Monoterpene
11	16.00	14.57%	delta-3-Carene	1008.00	Monoterpene
12	16.24	2.01%	alpha-Terpinene	1014.00	Monoterpene
13	16.45	0.02%	meta-Cymene	1022.00	Monoterpene
14	16.57	2.39%	para-Cymene	1024.30	Monoterpene
15	16.77	8.54%	Limonene	1029.50	Monoterpene
16	16.78	Co-Eluting	beta-Phellandrene	1030.00	Monoterpene
17	18.00	0.45%	gamma-Terpinene	1054.00	Monoterpene
18	19.22	2.07%	Terpinolene	1092.10	Monoterpene
19	19.63	0.29%	Linalool	1099.00	Monoterpenol
20	21.47	0.06%	Camphor	1147.55	Monoterpene Ketone
21	21.89	0.17%	Karahanaenone	1156.03	Monoterpene Ketone
22	22.31	0.42%	Borneol	1168.71	Monoterpenol
23	22.73	0.82%	Terpinen-4-ol	1180.57	Monoterpenol
24	22.98	0.03%	para-Cymen-8-ol	1185.25	Monoterpenol
25	23.22	0.21%	alpha-Terpineol	1191.71	Monoterpenol
26	26.66	0.70%	Bornyl acetate	1288.29	Monoterpene Ester
27	28.80	2.31%	alpha-Terpinyl acetate	1353.00	Monoterpene Ether
28	31.11	0.16%	alpha-Cedrene	1410.75	Sesquiterpene
29	31.29	0.23%	beta-Caryophyllene	1427.14	Sesquiterpene
30	32.38	0.04%	alpha-Humulene	1461.43	Sesquiterpene
31	33.22	0.34%	Germacrene D	1484.71	Sesquiterpene
32	33.74	0.04%	alpha-Murolene	1500.25	Sesquiterpene
33	34.19	0.03%	gamma-Cadinene	1515.29	Sesquiterpene
34	34.44	0.10%	delta-Cadinene	1524.14	Sesquiterpene
35	36.96	8.55%	Cedrol	1600.04	Sesquiterpenol