

Client



Source



Jasmine Absolute (*Jasminum grandiflorum*)
NF-JASM-19-A

Sample

Jasmine Absolute (*Jasminum grandiflorum*)

Batch #:..... NF-JASM-19-A

Type:..... Essential Oil

CAS Number:... 8022-96-6

Nature's Fusions

Client



Website



Primary

11.28%

Methyl linolenate

10.88%

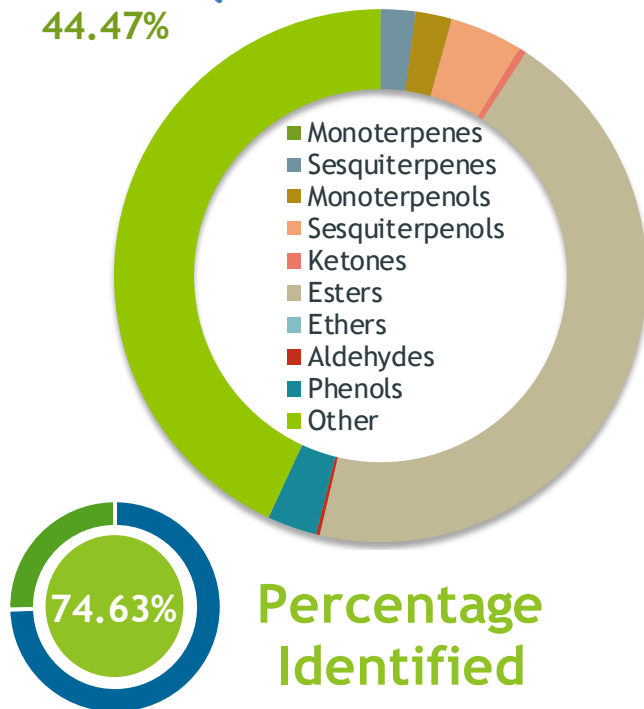
Benzyl acetate

9.97%

Phytyl acetate

Esters

44.47%



Result



Conclusion

No adulterants, diluents, or contaminants were detected via this method. This oil meets the expected profile for genuine essential oil of Jasmine Absolute (*Jasminum grandiflorum*)

Internal Number: | EVS-2883



Essential Validation Services

747 SW 2nd Ave IMB 12 Suite 306
Gainesville, FL 32601

317.361.5044 |

<https://essentialvalidationservices.com/>

adam@essentialvalidationservices.com

Monoterpenes	0.01%
Sesquiterpenes	2.11%
Monoterpenols	2.20%
Sesquiterpenols	4.43%
Ketones	0.45%
Esters	44.47%
Ethers	0.00%
Aldehydes	0.22%
Phenols	3.01%
Other	43.10%

Client



Source



Jasmine Absolute (Jasminum grandiflorum)
NF-JASM-19-A

Total Percentage		74.63%			
Number	RT	Area %	Compound Name	RI	Chemical Family
1	9.80	0.03%	cis-Hex-3-en-1-ol	850.00	Aliphatic Alcohol
2	14.06	0.01%	Benzaldehyde	958.00	Simple Phenolic
3	14.95	0.01%	Phenol	983.30	Phenol
4	15.98	0.02%	(Z)-3-Hexenyl acetate	1004.00	Aliphatic Ester
5	16.25	0.01%	Hexyl acetate	1009.00	Aliphatic Ester
6	16.90	0.01%	Limonene	1029.50	Monoterpene
7	17.09	1.48%	Benzyl alcohol	1032.00	Simple Phenolic
8	18.78	0.19%	p-Cresol	1078.80	Phenol
9	19.60	0.10%	Methyl benzoate	1096.10	Phenolic Ester
10	19.77	2.20%	Linalool	1099.00	Monoterpenol
11	20.33	0.02%	2-Phenylethanol	1116.30	Simple Phenolic
12	22.33	10.88%	Benzyl acetate	1161.25	Phenolic Ester
13	22.56	0.03%	Ethyl benzoate	1169.00	Phenolic Ester
14	23.48	0.03%	Methyl salicylate	1192.29	Phenolic Ester
15	25.66	0.04%	2-Phenylethyl acetate	1257.00	Phenolic Ester
16	27.00	0.99%	Indole	1293.60	Indole
17	29.15	1.22%	Eugenol	1365.89	Phenylpropanoid
18	30.54	2.08%	trans-Jasmone	1392.00	Jasmonate
19	32.14	0.08%	(E)-Isoeugenol	1460.00	Phenylpropanoid
20	33.48	0.40%	Prenyl benzoate	1484.70	Monoterpene Ester
21	33.89	2.11%	(E,E)-alpha-Farnesene	1508.14	Sesquiterpene
22	35.55	0.25%	(Z)-Nerolidol	1542.25	Sesquiterpenol
23	35.84	1.41%	3-cis-Hexenyl benzoate	1568.00	Monoterpene Ester
24	36.01	0.08%	Hexyl benzoate	1575.00	Phenolic Ester
25	36.53	0.12%	Jasmine unidentified		
26	36.68	0.38%	Jasmine unidentified		
27	38.03	0.92%	cis-Methyl jasmanoate	1654.00	Monoterpene Ester
28	41.37	7.75%	Benzyl benzoate	1752.00	Phenolic Ester
29	43.03	0.22%	Hexadecanal	1813.50	Sesquiterpene Aldehyde
30	43.19	0.45%	Phytone	1854.00	Aliphatic Ketone
31	44.11	0.23%	Benzyl salicylate	1861.00	Phenolic Ester
32	45.19	1.32%	Methyl palmitate	1924.67	Fatty Acid Ester
33	45.79	9.40%	Isophytol	1954.50	Diterpenol
34	47.78	4.18%	Geranyl Linalool	2026.00	Sesquiterpenol
35	49.38	3.16%	Methyl 9,12-octadecadienoate		

ESSENTIAL VALIDATION SERVICES | 747 SW 2ND AVE GAINESVILLE, FLORIDA 32601 | 317-361-5044

Client



Source



Jasmine Absolute (*Jasminum grandiflorum*)
NF-JASM-19-A

Number	RT	Area %	Compound Name	RI	Chemical Family
36	49.69	11.28%	Methyl linolenate	2089	
37	50.53	0.15%	Phytol	2117.25	Diterpenol
38	52.00	9.97%	Phytyl acetate	2221.00	Diterpene Ester
39	61.24	5.08%	Squalene	2831.50	Triterpene
40	62.29	9.52%	2,3 epoxy dihydro squalene		

ESSENTIAL VALIDATION SERVICES | 747 SW 2ND AVE GAINESVILLE, FLORIDA 32601 | 317-361-5044