



Essential Validation Services



Sample:

Client: | Nature's Fusions
Sample: | Lavender (Lavandula angustifolia)
Batch # | 952103 #E1075-G
CAS Number | 8000-28-0
Type: | Essential Oil

Conclusion:

- No adulterants, diluents, or contaminants were detected via this method.



X 

Validated By:

Essential Validation Services

747 SW 2nd Ave, Gainesville, FL 32601

Phone: 317-361-5044 E-mail: Adam@essentialvalidationservices.com

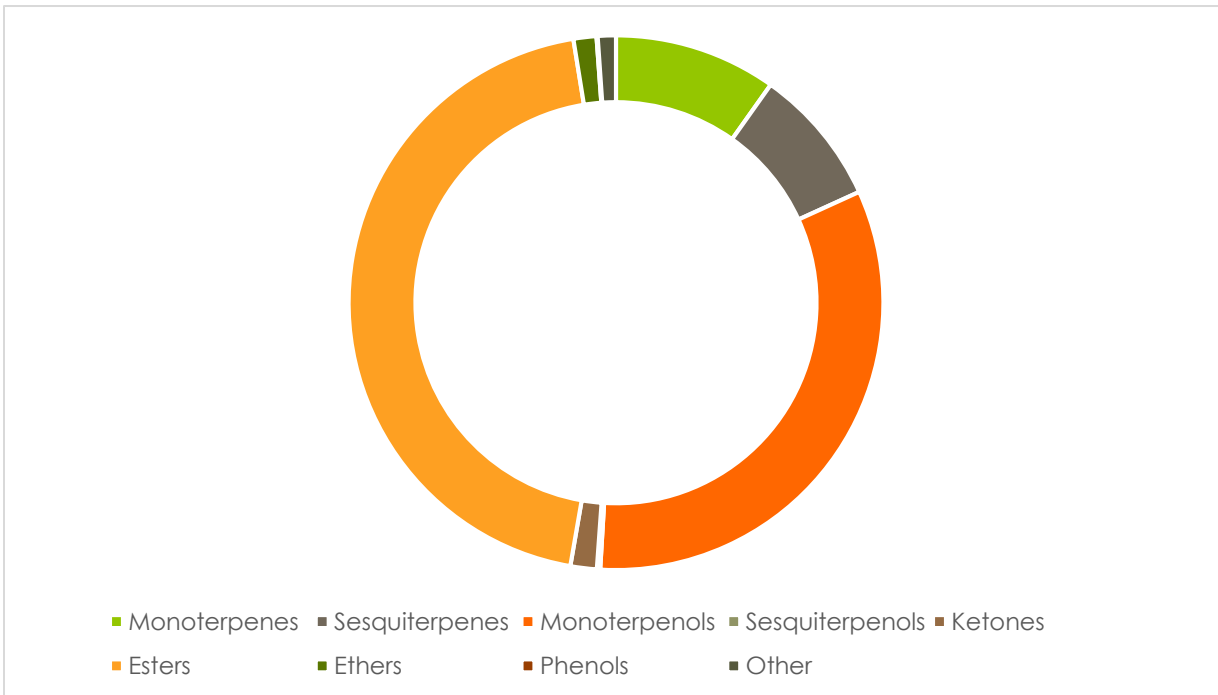
Summary of Analyses

A fresh sample of Lavender (Lavandula angustifolia) Essential Oil (10 uL in .5to.5 mL Hexane + ETOH) was prepared and analyzed via split injection GC/EI-MS.



Main Compounds	Percentages
Linalyl acetate	36.68%
Linalool	26.17%
Lavandulyl acetate	2.67%
Myrcene	2.44%
Terpinen-4-ol	2.38%
(E)-beta-Ocimene	1.91%
Neryl acetate	1.86%
Geranyl acetate	1.63%
Borneol	1.56%
1,8-Cineole	1.12%
Alloocimene	1.08%
Octan-3-one	1.04%
delta-3-Carene	1.02%

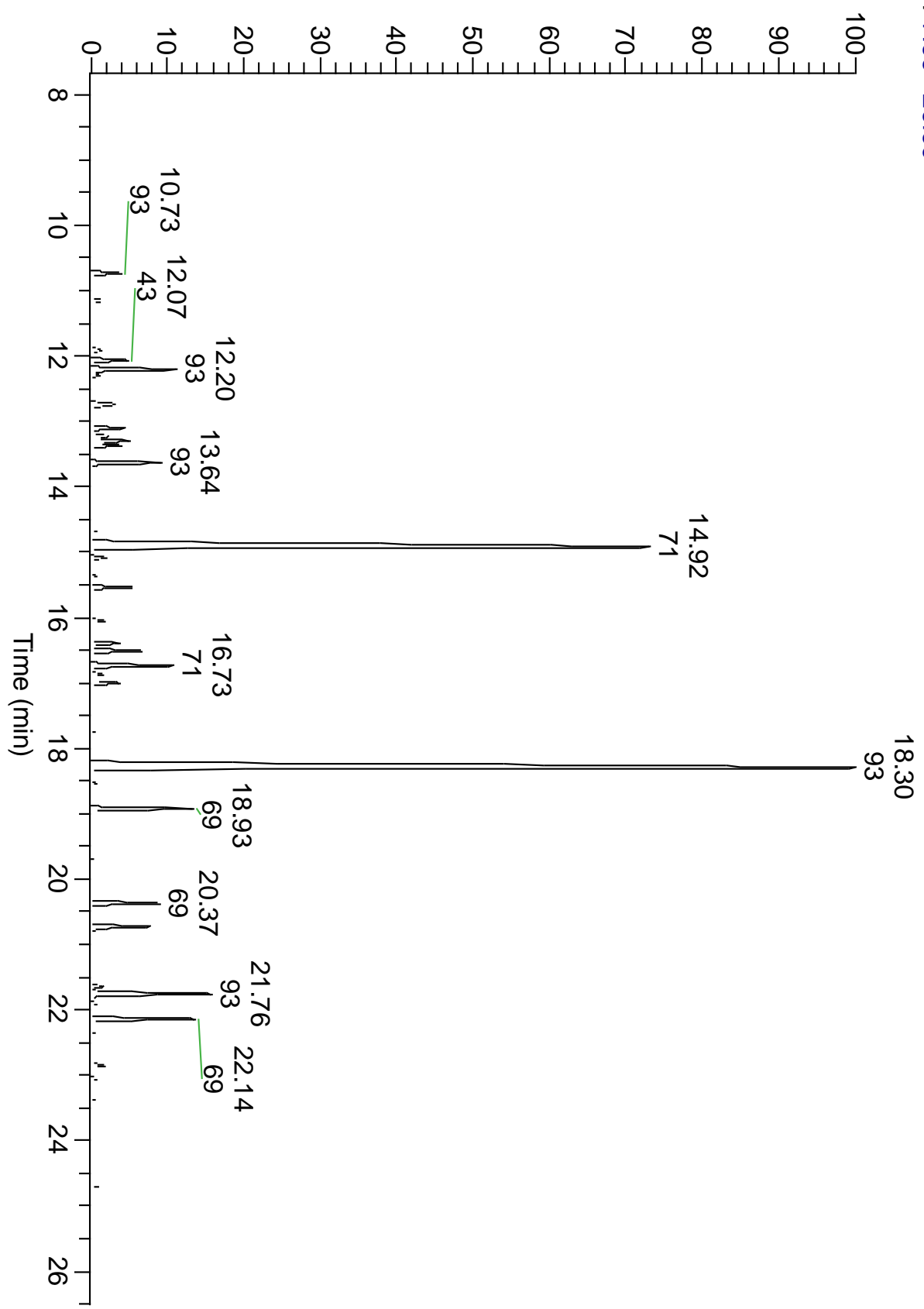
Monoterpenes	Sesquiterpenes	Monoterpenols	Sesquiterpenols	Ketones
9.70%	8.26%	32.33%	0.20%	1.57%
Esters	Ethers	Aldehydes	Phenols	Other
44.14%	1.37%	0.07%	0.00%	1.08%



ESSENTIAL VALIDATION SERVICES | 747 SW 2ND AVE GAINESVILLE, FLORIDA 32601 | 317-361-5044



RT: 7.66 - 26.69



ESSENTIAL VALIDATION SERVICES | 747 SW 2ND AVE GAINESVILLE, FLORIDA 32601 | 317-361-5044



ESSENTIAL VALIDATION SERVICES | 747 SW 2ND AVE GAINESVILLE, FLORIDA 32601 | 317-361-5044

Total Percentage	98.72%				
Peak Number	RT	Area %	Compound Name	RI	Chemical Family
1	10.42	0.03%	Tricyclene	923.20	Monoterpenes
2	10.54	0.04%	alpha-Thujene	927.80	Monoterpenes
3	10.73	0.92%	alpha-Pinene	936.10	Monoterpenes
4	11.15	0.37%	Camphene	953.30	Monoterpenes
5	11.80	0.03%	Sabinene	973.00	Monoterpenes
6	11.91	0.39%	beta-Pinene	977.70	Monoterpenes
7	12.07	1.04%	Octan-3-one	984.50	Ketones
8	12.20	2.44%	Myrcene	989.20	Monoterpenes
9	12.73	1.02%	delta-3-Carene	1011.30	Monoterpenes
10	12.73	Co-Eluting	Hexyl acetate	1015.00	Esters
11	12.91	0.05%	alpha-Terpinene	1017.10	Monoterpenes
12	13.10	0.96%	para-Cymene	1024.30	Monoterpenes
13	13.22	0.60%	Limonene	1029.50	Monoterpenes
14	13.22	Co-Eluting	beta-Phellandrene	1030.00	Monoterpenes
15	13.30	1.12%	1,8-Cineole	1031.80	Ethers
16	13.37	0.86%	(Z)-beta-Ocimene	1037.80	Monoterpenes
17	13.64	1.91%	(E)-beta-Ocimene	1047.70	Monoterpenes
18	13.95	0.08%	gamma-Terpinene	1063.71	Monoterpenes
19	14.28	0.09%	cis-Linalool oxide (5) (furanoid)	1075.10	Monoterpenols
20	14.66	0.22%	trans-Linalool oxide (5) (furanoid)	1092.20	Monoterpenols
21	14.92	26.17%	Linalool	1099.00	Monoterpenols
22	15.08	0.40%	Octan-3-yl acetate	1127.00	Esters
23	15.36	0.12%	Octen-3-yl acetate	1107.00	Esters
24	15.54	1.08%	Alloocimene	1129.90	Other
25	15.92	0.06%	Camphene hydrate	1148.70	Esters
26	16.05	0.43%	Camphor	1153.86	Ketones
27	16.39	0.80%	Lavandulol	1161.50	Monoterpenols
28	16.51	1.56%	Borneol	1168.71	Monoterpenols
29	16.73	2.38%	Terpinen-4-ol	1180.57	Monoterpenols
30	16.87	0.36%	Hexyl butyrate	1185.50	Esters
31	16.94	0.10%	Cryptone	1185.33	Ketones
32	17.00	0.85%	alpha-Terpineol	1191.71	Monoterpenols
33	17.27	0.05%	Octyl acetate	1215.00	Esters
34	17.72	0.18%	Nerol	1230.67	Monoterpenols
35	17.84	0.08%	cis-Carveol	1232.25	Monoterpenols
36	17.92	0.07%	Hexyl 3-methylbutanoate	1242.00	Esters
37	18.07	0.07%	Cuminal	1243.00	Aldehydes
38	18.30	36.68%	Linalyl acetate	1263.80	Esters
39	18.53	0.15%	cis-Verbenyl acetate	1282.00	Esters
40	18.93	2.67%	Lavandulyl acetate	1285.00	Esters
41	19.01	0.09%	Bornyl acetate	1288.29	Esters
42	20.37	1.86%	Neryl acetate	1362.90	Esters

43	20.73	1.63%	Geranyl acetate	1384.71	Esters
44	21.00	0.12%	beta-Bourbonene	1388.70	Sesquiterpenes
45	21.28	0.07%	cis-alpha-Bergamotene	1424.50	Sesquiterpenes
46	21.64	0.32%	alpha-Santalene	1426.50	Sesquiterpenes
47	21.76	3.70%	beta-Caryophyllene	1427.14	Sesquiterpenes
48	21.90	0.18%	beta-Copaene	1445.00	Sesquiterpenes
49	22.14	2.82%	(Z)-beta-Farnesene	1453.40	Sesquiterpenes
50	22.23	0.09%	(E)-beta-Farnesene	1456.29	Sesquiterpenes
51	22.37	0.19%	alpha-Humulene	1461.43	Sesquiterpenes
52	22.85	0.42%	Germacrene D	1484.71	Sesquiterpenes
53	23.17	0.15%	beta-Bisabolene	1509.86	Sesquiterpenes
54	23.40	0.20%	gamma-Cadinene	1515.29	Sesquiterpenes
55	24.69	0.25%	Caryophyllene oxide	1594.86	Ethers
56	25.54	0.11%	T-Cadinol	1640.43	Sesquiterpenols
57	26.13	0.09%	alpha-Bisabolol	1677.50	Sesquiterpenols