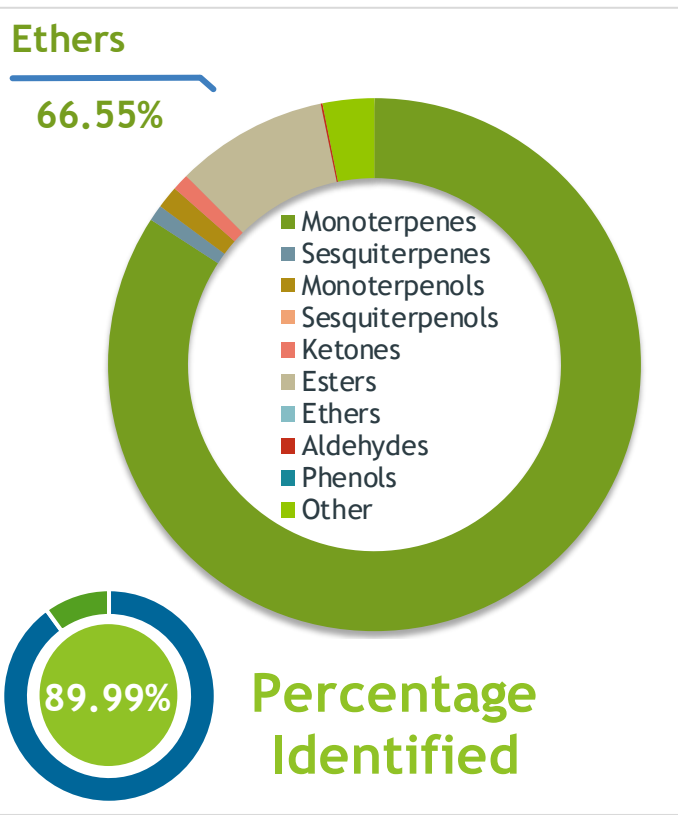


**Client**  **Source** 

Myrrh (*Commiphora myrrha*)  
NF-MYRR-19-A

**Sample** Myrrh (*Commiphora myrrha*)  
Batch #:..... NF-MYRR-19-A  
Type:..... Essential Oil  
CAS Number:... 8016-37-3  
**Nature's Fusions**



**Client**  **Website** 

**Primary**  
26.68% Curzerene  
24.61% Furanoeudesma-1,3-diene  
9.24% Lindestrene

**Result** 

**Conclusion**  
No adulterants, diluents, or contaminants were detected via this method. This oil meets the expected profile for genuine essential oil of Myrrh (*Commiphora myrrha*)  
Internal Number: | EVS-2898

  
**Essential Validation Services**  
747 SW 2nd Ave IMB 12 Suite 306  
Gainesville, FL 32601  
317.361.5044 |  
<https://essentialvalidationservices.com/>  
adam@essentialvalidationservices.com  


Monoterpenes	0.23%
Sesquiterpenes	15.07%
Monoterpenols	0.00%
Sesquiterpenols	3.24%
Ketones	1.35%
Esters	3.55%
Ethers	66.55%
Aldehydes	0.00%
Phenols	0.00%
Other	10.01%

ESSENTIAL VALIDATION SERVICES | 747 SW 2<sup>ND</sup> AVE GAINESVILLE, FLORIDA 32601 | 317-361-5044

Client


**Nature's FUSIONS**  
 ESSENTIAL OILS

Source



*Myrrh (Commiphora myrrha)*  
 NF-MYRR-19-A

Total Percentage		89.99%			
Number	RT	Area %	Compound Name	RI	Chemical Family
1	12.86	0.01%	alpha-Pinene	936.10	Monoterpene
2	16.84	0.02%	Limonene	1029.50	Monoterpene
3	17.63	0.20%	(E)-beta-Ocimene	1047.70	Monoterpene
4	26.73	0.01%	Bornyl acetate	1288.29	Monoterpene Ester
5	28.54	1.29%	delta-Elemene	1335.83	Sesquiterpene
6	28.95	0.05%	alpha-Cubebene	1355.71	Sesquiterpene
7	29.73	0.02%	alpha-Ylangene	1371.33	Sesquiterpene
8	29.87	0.15%	alpha-Copaene	1379.00	Sesquiterpene
9	30.20	0.49%	beta-Bourbonene	1388.70	Sesquiterpene
10	30.39	5.11%	beta-Elemene	1389.20	Sesquiterpene
11	31.08	0.09%	cis-alpha-Bergamotene	1411.50	Sesquiterpene
12	31.26	0.52%	alpha-Santalene	1426.50	Sesquiterpene
13	31.34	0.39%	beta-Caryophyllene	1427.14	Sesquiterpene
14	31.70	2.25%	gamma-Elemene	1434.00	Sesquiterpene
15	32.43	0.22%	alpha-Humulene	1461.43	Sesquiterpene
16	33.28	1.05%	Germacrene D	1484.71	Sesquiterpene
17	33.47	0.74%	beta-Selinene	1487.57	Sesquiterpene
18	33.82	26.68%	Curzerene	1497.00	Sesquiterpene Ether
19	34.06	0.28%	cis-alpha-Bisabolene	1502.00	Sesquiterpene
20	34.28	0.45%	gamma-Cadinene	1515.29	Sesquiterpene
21	34.50	0.36%	delta-Cadinene	1524.14	Sesquiterpene
22	34.95	0.23%	Selina-3,7(11)-diene	1544.50	Sesquiterpene
23	35.63	1.38%	Germacrene B	1557.71	Sesquiterpene
24	36.17	0.58%	Curzerenone	1601.00	Sesquiterpene Ketone
25	37.27	0.12%	1,10-di-epi-Cubenol	1612.29	Sesquiterpenol
26	37.73	24.61%	Furanoedesma-1,3-diene	1628.50	Sesquiterpene Ether
27	37.91	9.24%	Lindstrene	1634.00	Sesquiterpene Ether
28	37.99	1.04%	T-Cadinol	1640.43	Sesquiterpenol
29	38.43	0.39%	alpha-Muurolol	1649.33	Sesquiterpenol
30	38.87	1.69%	Bulnesol	1667.60	Sesquiterpenol
31	39.27	0.75%	Elemol acetate	1667.20	Sesquiterpene Ester
32	39.59	0.77%	Germacrene	1684.00	Sesquiterpene Ketone
33	40.10	6.02%	2-Methoxyfuranodiene	1714.00	Sesquiterpene Ether
34	44.39	2.79%	2-Acetoxyfuranodiene	1878.00	Sesquiterpene Ester

 ESSENTIAL VALIDATION SERVICES | 747 SW 2<sup>ND</sup> AVE GAINESVILLE, FLORIDA 32601 | 317-361-5044

