



# *Essential Validation Services*





**Sample:**

---

Client: | Nature's Fusions  
Sample: | Patchouli (Pogostemon cablin)  
Batch # | PATC184  
CAS Number | 8014-09-3  
Type: | Essential Oil

---

**Conclusion:**

- No adulterants, diluents, or contaminants were detected via this method.
- This oil meets the expected profile for genuine essential oil of Patchouli (Pogostemon cablin).



X *Adam Christen*

---

Validated By:

Essential Validation Services

747 SW 2nd Ave, Gainesville, FL 32601

Phone: 317-361-5044 E-mail: Adam@essentialvalidationservices.com

**Summary of Analyses**

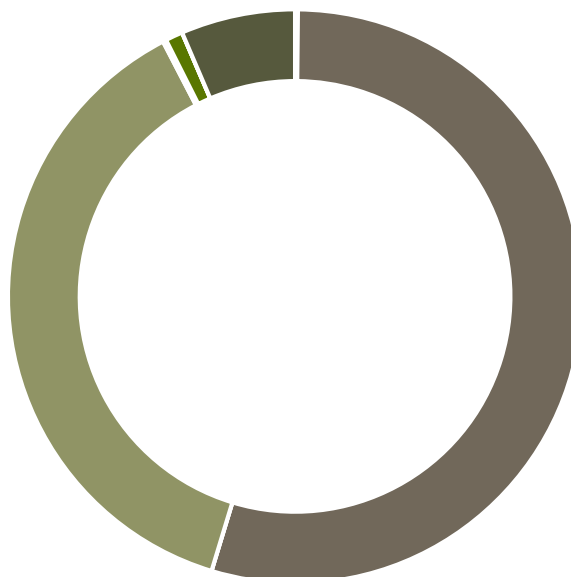
---

A fresh sample of Patchouli (Pogostemon cablin) Essential Oil (10 uL in .5to.5 mL Hexane + ETOH) was prepared and analyzed via split injection GC/EI-MS.



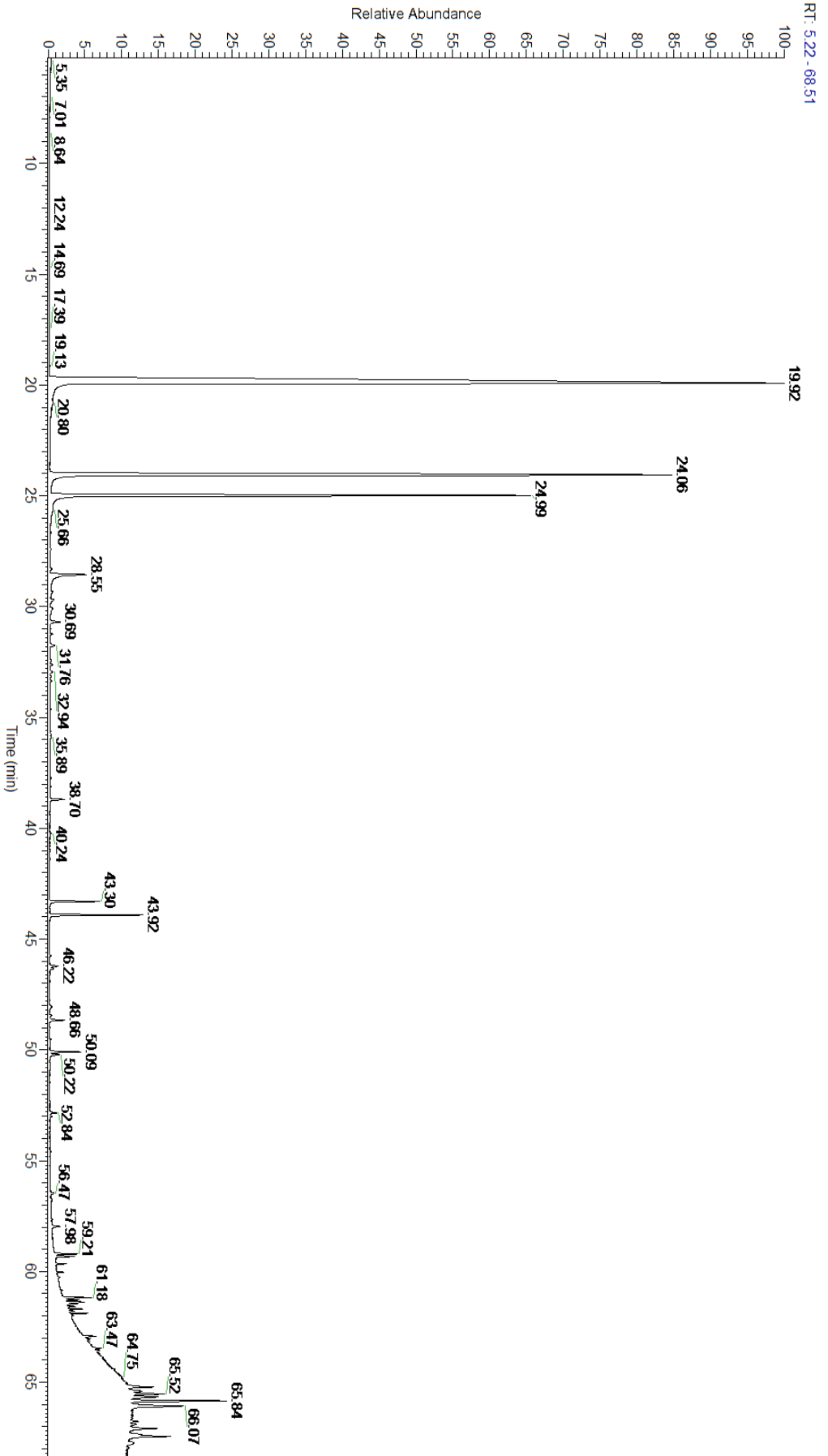
Main Compounds	Percentages
Patchouli alcohol	32.77%
delta-Guaiene	16.54%
alpha-Guaiene	10.49%
gamma-Patchoulene	5.38%
alpha-Patchoulene	5.06%
Aciphyllene	4.88%
Pogostol	3.61%
gamma-Gurjunene	2.96%
Pogostone	2.86%
beta-Caryophyllene	2.22%
beta-Patchoulene	1.90%
Ledol	1.02%
Caryophyllene oxide	0.98%

Monoterpenes	Sesquiterpenes	Monoterpenols	Sesquiterpenols	Ketones
0.16%	54.54%	0.00%	37.69%	0.19%
Esters	Ethers	Aldehydes	Phenols	Other
0.00%	0.98%	0.00%	0.00%	6.44%



- Monoterpenes
- Sesquiterpenes
- Monoterpenols
- Sesquiterpenols
- Ketones
- Esters
- Ethers
- Phenols
- Other

ESSENTIAL VALIDATION SERVICES | 747 SW 2<sup>ND</sup> AVE GAINESVILLE, FLORIDA 32601 | 317-361-5044



ESSENTIAL VALIDATION SERVICES | 747 SW 2<sup>ND</sup> AVE GAINESVILLE, FLORIDA 32601 | 317-361-5044



ESSENTIAL VALIDATION SERVICES | 747 SW 2<sup>ND</sup> AVE GAINESVILLE, FLORIDA 32601 | 317-361-5044

Total Percentage		97.28%			
Peak Number	RT	Area %	Compound Name	RI	Chemical Family
1	12.23	0.05%	alpha-Pinene	936.10	Monoterpene
2	14.01	0.11%	beta-Pinene	974.00	Monoterpene
3	27.90	0.10%	delta-Elemene	1335.83	Sesquiterpene
4	29.05	0.02%	alpha-Copaene	1379.00	Sesquiterpene
5	29.48	1.90%	beta-Patchoulene	1380.00	Sesquiterpene
6	29.73	0.78%	beta-Elemene	1389.20	Sesquiterpene
7	30.28	0.01%	Longifolene	1403.83	Sesquiterpene
8	30.43	0.41%	Cycloseychellene	1410.30	Sesquiterpene
9	30.71	2.22%	beta-Caryophyllene	1427.14	Sesquiterpene
10	31.31	10.49%	alpha-Guaiene	1438.67	Sesquiterpene
11	31.52	5.38%	gamma-Patchoulene	1454.00	Sesquiterpene
12	31.68	0.13%	Seychellene	1461.40	Sesquiterpene
13	31.81	0.65%	alpha-Humulene	1461.43	Sesquiterpene
14	31.94	5.06%	alpha-Patchoulene	1459.50	Sesquiterpene
15	32.04	2.96%	gamma-Gurjunene	1473.17	Sesquiterpene
16	32.25	0.41%	allo-Aromadendrene	1471.00	Sesquiterpene
17	32.47	0.59%	delta-Patchoulene	1476.30	Sesquiterpene
18	32.57	0.14%	gamma-Murolene	1478.86	Sesquiterpene
19	32.88	0.85%	beta-Selinene	1487.57	Sesquiterpene
20	33.17	4.88%	Aciphyllene	1501.10	Sesquiterpene
21	33.45	16.54%	delta-Guaiene	1511.50	Sesquiterpene
22	33.59	0.04%	cis-gamma-Bisabolene	1517.25	Sesquiterpene
23	33.80	0.32%	epi-alpha-Selinene	1520.33	Sesquiterpene
24	34.12	0.64%	gamma-Vetivenene	1532.00	Sesquiterpene
25	34.81	0.02%	Selina-3,7(11)-diene	1544.50	Sesquiterpene
26	35.03	0.86%	Norpatchoulenol	1577.00	Norsesquiterpenol
27	35.43	0.21%	Spathulenol	1587.00	Sesquiterpenol
28	35.79	0.98%	Caryophyllene oxide	1594.86	Sesquiterpene Ether
29	36.52	0.08%	1,10-di-epi-Cubenol	1612.29	Sesquiterpenol
30	36.96	1.02%	Ledol	1623.00	Sesquiterpenol
31	37.83	3.61%	Pogostol	1651.50	Sesquiterpenol
32	38.13	32.77%	Patchouli alcohol	1660.50	Sesquiterpenol
33	39.22	0.19%	Patchoulone	1701.00	Sesquiterpene Ketone
34	39.40	2.86%	Pogostone	1708.00	Lactone
35	39.88	0.26%	Longifolol		