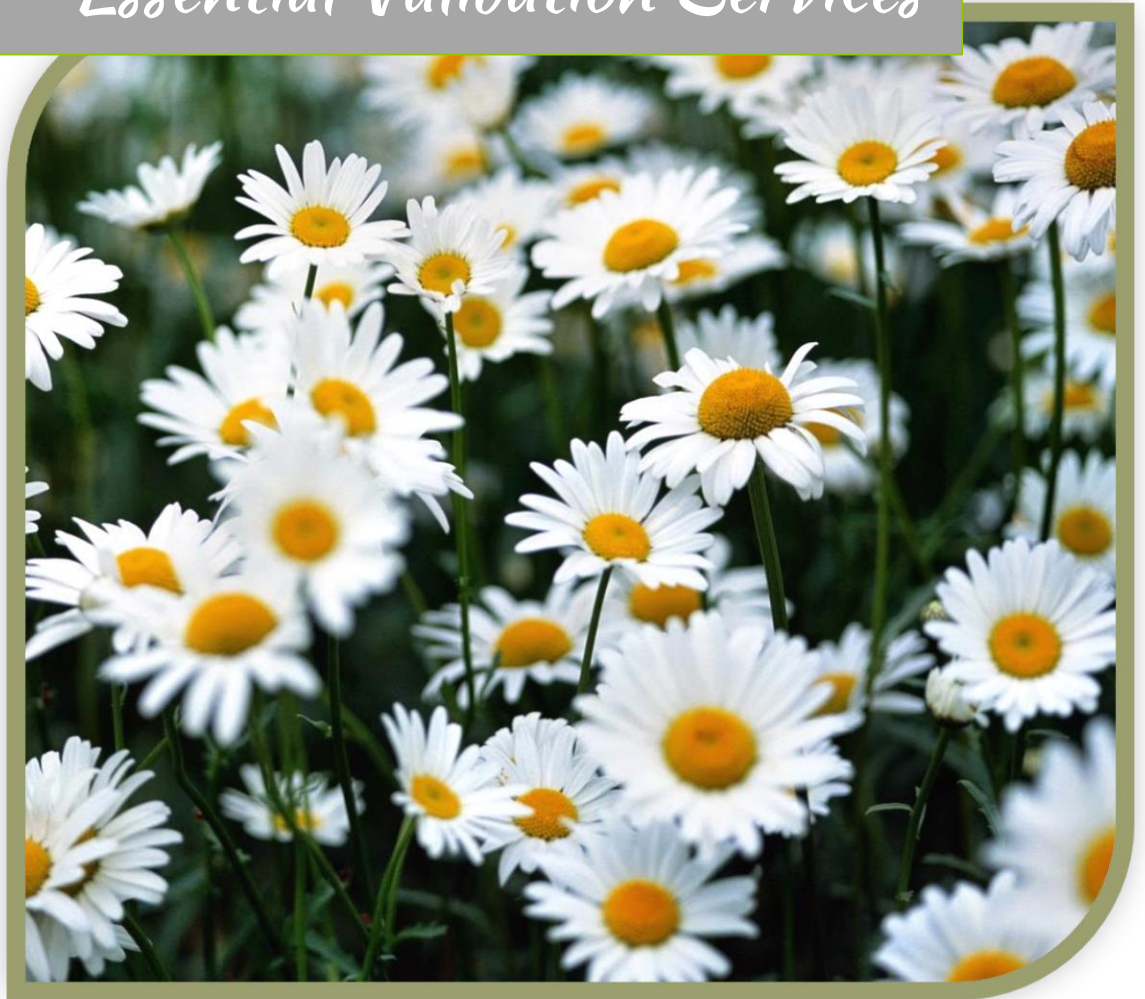




Essential Validation Services





Sample:

Client: | Nature's Fusions
Sample: | Roman Chamomile (Anthemis nobilis)
Batch # | 100742
CAS Number | 8015-92-7
Type: | Essential Oil

Conclusion:

- No adulterants, diluents, or contaminants were detected via this method.
- This oil meets the expected profile for genuine essential oil of Roman Chamomile (Anthemis nobilis).

X 

Validated By:



Essential Validation Services

747 SW 2nd Ave, Gainesville, FL 32601

Phone: 317-361-5044 E-mail: Adam@essentialvalidationservices.com

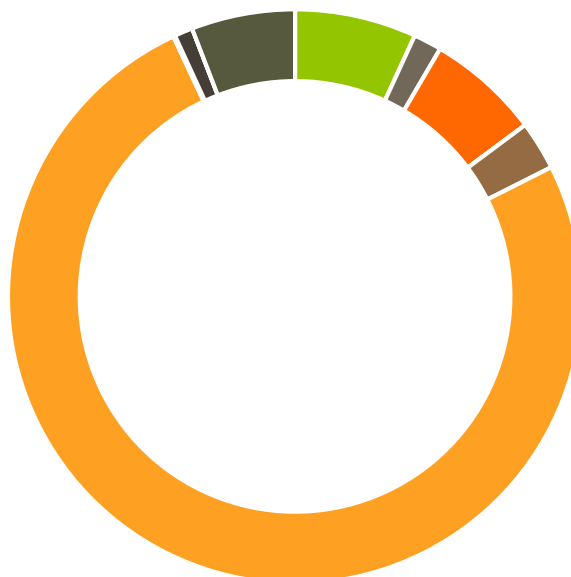
Summary of Analyses

A fresh sample of Roman Chamomile (Anthemis nobilis) Essential Oil (10 uL in .5 to .5 mL Hexane + ETOH) was prepared and analyzed via split injection GC/EI-MS.



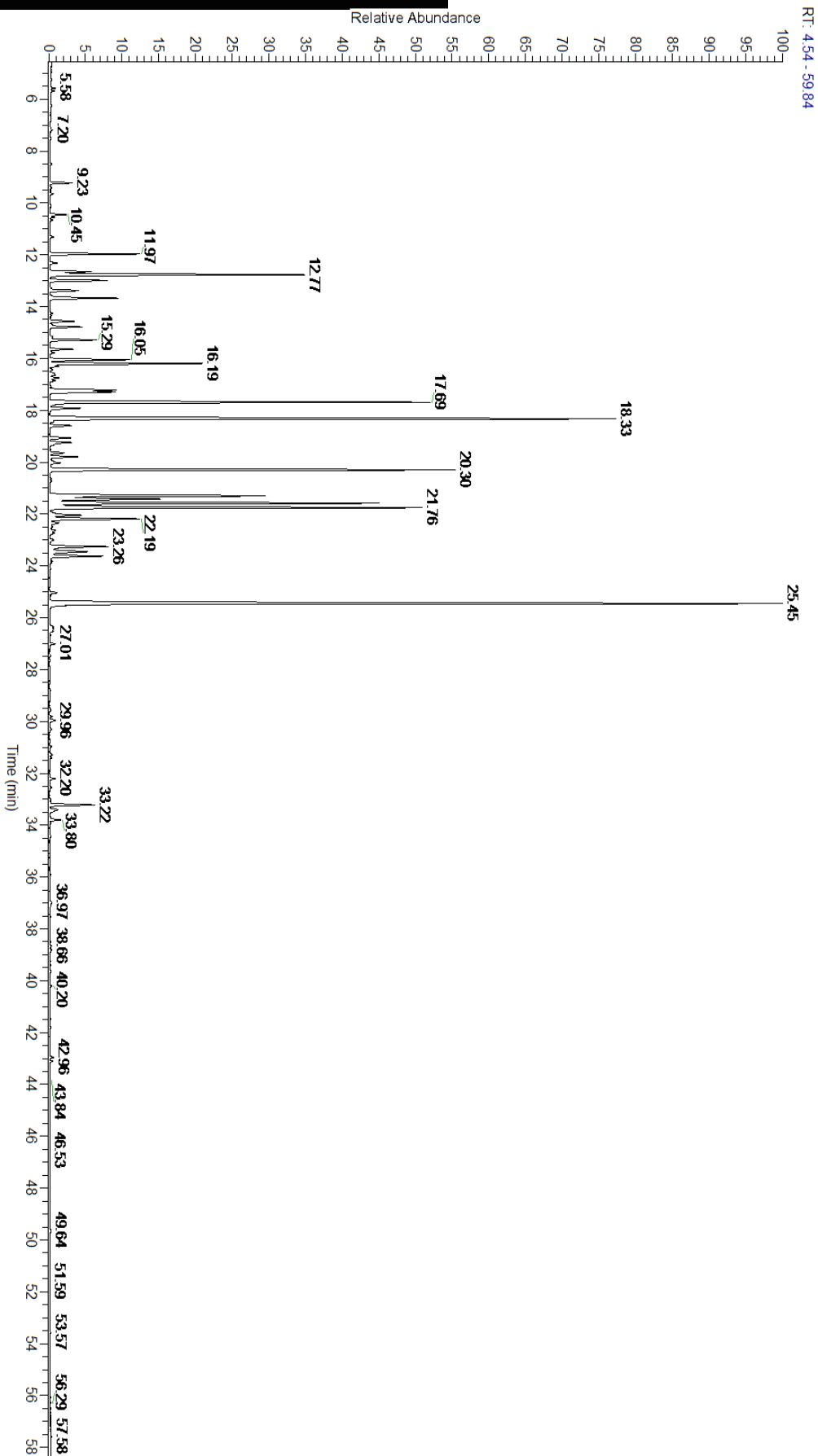
Main Compounds	Percentages
3-Methylamyl angelate	16.51%
Methylamyl angelate	12.56%
3-Methylamyl isobutyrate	7.64%
Isoamyl angelate	7.45%
Isobutyl angelate	7.41%
2-Methylbutyl angelate	6.67%
alpha-Pinene	5.19%
trans-Pinocarveol	4.65%
2-Methylbutyl isobutyrate	2.83%
3-Methylamyl methacrylate	2.37%
Pinocarpone	2.02%
Isobutyl isobutyrate	1.52%
Isoamyl isobutyrate	1.43%

Monoterpenes	Sesquiterpenes	Monoterpenols	Sesquiterpenols	Ketones
6.85%	1.59%	6.37%	0.00%	2.76%
Esters	Ethers	Aldehydes	Phenols	Other
75.46%	0.10%	1.03%	0.00%	5.84%



- Monoterpenes
- Sesquiterpenes
- Monoterpenols
- Sesquiterpenols
- Ketones
- Esters
- Ethers
- Phenols
- Other

ESSENTIAL VALIDATION SERVICES | 747 SW 2ND AVE GAINESVILLE, FLORIDA 32601 | 317-361-5044





ESSENTIAL VALIDATION SERVICES | 747 SW 2ND AVE GAINESVILLE, FLORIDA 32601 | 317-361-5044

Total Percentage		94.52%			
Peak Number	RT	Area %	Compound Name	RI	Chemical Family
1	9.23	0.36%	3-Methylpentanol	833.00	Aliphatic Alcohol
2	9.65	0.05%	Propyl isobutyrate	847.00	Aliphatic Ester
3	10.45	0.29%	Isoamyl acetate	869.00	Aliphatic Ester
4	10.67	0.05%	2-Methylbutyl acetate	871.00	Aliphatic Ester
5	11.97	1.52%	Isobutyl isobutyrate	908.00	Aliphatic Ester
6	12.32	0.13%	Prenyl acetate	914.00	Aliphatic Ester
7	12.77	5.19%	alpha-Pinene	936.10	Monoterpene
8	12.99	1.03%	Isobutyl methacrylate	939.00	Aliphatic Ester
9	13.38	0.58%	Camphene	950.30	Monoterpene
10	13.67	1.31%	Isobutyl butyrate	954.00	Aliphatic Ester
11	14.26	0.04%	Methyl methacrylate	968.50	Aliphatic Ester
12	14.43	0.02%	Sabinene	973.00	Monoterpene
13	14.56	0.50%	beta-Pinene	974.00	Monoterpene
14	14.78	0.59%	UK Roman Chamomile		
15	15.17	0.06%	Myrcene	989.20	Monoterpene
16	15.29	0.86%	Isobutyl 2-methylbutyrate	991.50	Aliphatic Ester
17	15.64	0.42%	UK Roman Chamomile		
18	16.05	1.43%	Isoamyl isobutyrate	1007.00	Aliphatic Ester
19	16.19	2.83%	2-Methylbutyl isobutyrate	1013.00	Aliphatic Ester
20	16.31	0.16%	alpha-Terpinene	1014.00	Monoterpene
21	16.57	0.09%	para-Cymene	1024.30	Monoterpene
22	16.64	0.10%	Propyl angelate	1027.00	Aliphatic Ester
23	16.75	0.18%	Limonene	1029.50	Monoterpene
24	16.85	0.10%	1,8-Cineole	1031.80	Monoterpene Ether
25	17.22	1.23%	Isoamyl methacrylate	1046.00	Aliphatic Ester
26	17.29	1.24%	2-Methylbutyl methacrylate	1047.00	Aliphatic Ester
27	17.69	7.41%	Isobutyl angelate	1053.75	Aliphatic Ester
28	17.79	0.07%	gamma-Terpinene	1054.00	Monoterpene
29	17.92	0.61%	Artemisia ketone	1057.00	Monoterpene Ketone
30	18.33	12.56%	Methallyl angelate	1065.50	Aliphatic Ester
31	19.07	0.40%	Butyl angelate	1092.00	Aliphatic Ester
32	19.25	0.50%	Isobutyl tiglate	1092.30	Aliphatic Ester
33	19.64	0.27%	Linalool	1099.00	Monoterpenol
34	19.79	0.56%	2-Methylbutyl 2-methylbutyrate	1102.10	Aliphatic Ester
35	20.03	0.26%	Isoamyl isovalerate	1103.10	Aliphatic Ester
36	20.30	7.64%	3-Methylamyl isobutyrate	1115.00	Aliphatic Ester
37	21.30	4.65%	trans-Pinocarveol	1143.75	Monoterpenol
38	21.42	2.37%	3-Methylamyl methacrylate	1146.00	Aliphatic Ester
39	21.58	6.67%	2-Methylbutyl angelate	1152.75	Aliphatic Ester
40	21.76	7.45%	Isoamyl angelate	1154.75	Aliphatic Ester
41	22.19	2.02%	Pinocarpone	1161.43	Monoterpene Ketone
42	22.34	0.21%	Borneol	1168.71	Monoterpenol
43	22.64	0.13%	cis-Pinocamphone	1172.00	Monoterpene Ketone

