



Essential Validation Services





Sample:

Client: | Nature's Fusions
Sample: | Rose Absolute (Rosa damscena)
Batch # | 10429694
CAS Number | 8007-01-7
Type: | Essential Oil

Conclusion:

- No adulterants, diluents, or contaminants were detected via this method.



X 

Validated By:

Essential Validation Services

747 SW 2nd Ave, Gainesville, FL 32601

Phone: 317-361-5044 E-mail: Adam@essentialvalidationservices.com

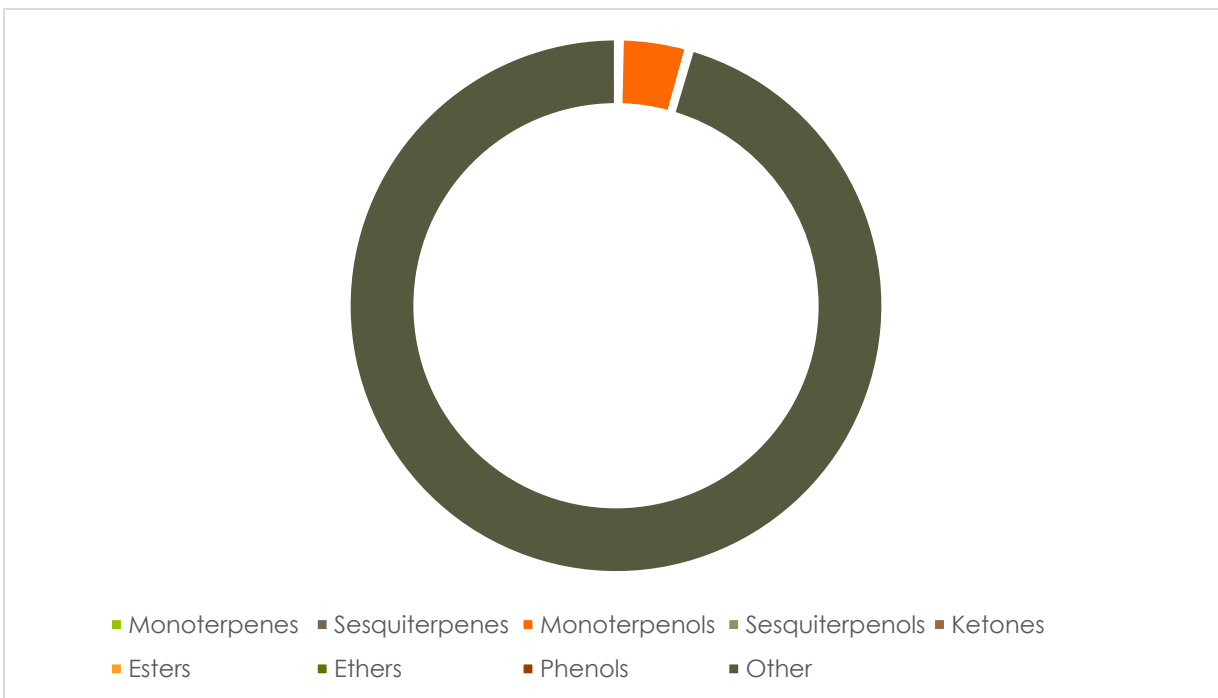
Summary of Analyses

A fresh sample of Rose Absolute (Rosa damscena) Essential Oil (10 uL in .5to.5 mL Hexane + ETOH) was prepared and analyzed via split injection GC/EI-MS.

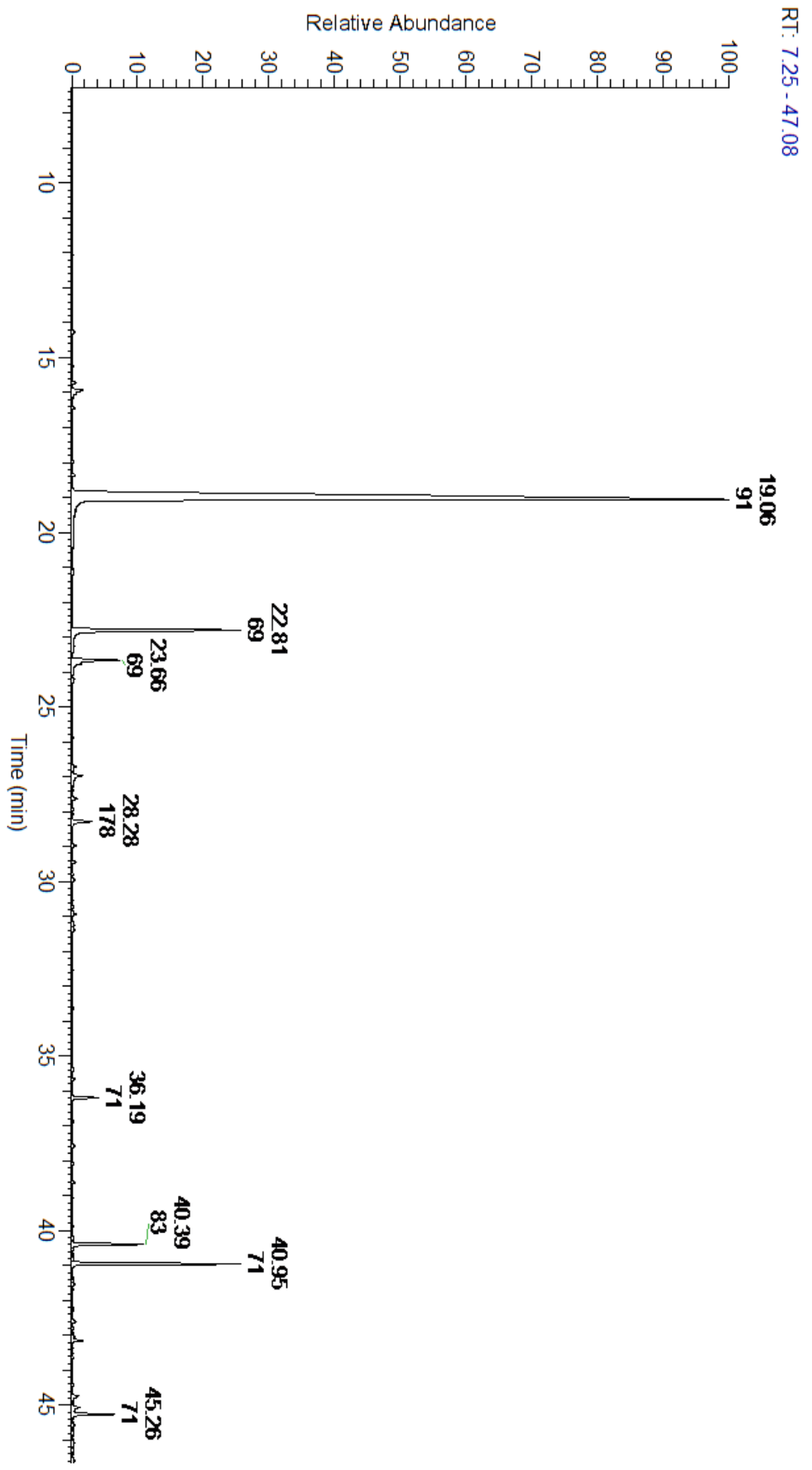


Main Compounds	Percentages
2-Phenylethanol	69.14%
Citronellol	8.03%
Nonadecane	6.28%
Nonadecene	2.75%
Geraniol	2.12%
Heneicosane	1.60%
Tetradecanol	0.97%
Methyl Eugenol	0.86%
Benzyl alcohol	0.75%
Docosane	0.59%
Eugenol	0.58%
Heptacosane	0.54%
Eicosane	0.39%

Monoterpenes	Sesquiterpenes	Monoterpenols	Sesquiterpenols	Ketones
0.41%	0.58%	11.21%	0.00%	0.00%
Esters	Ethers	Aldehydes	Phenols	Other
0.75%	0.02%	0.12%	71.33%	15.58%



ESSENTIAL VALIDATION SERVICES | 747 SW 2ND AVE GAINESVILLE, FLORIDA 32601 | 317-361-5044



ESSENTIAL VALIDATION SERVICES | 747 SW 2ND AVE GAINESVILLE, FLORIDA 32601 | 317-361-5044



ESSENTIAL VALIDATION SERVICES | 747 SW 2ND AVE GAINESVILLE, FLORIDA 32601 | 317-361-5044

Total Percentage		97.44%			
Peak Number	RT	Area %	Compound Name	RI	Chemical Family
1	12.05	0.01%	alpha-Pinene	936.10	Monoterpene
2	14.27	0.10%	Myrcene	989.20	Monoterpene
3	15.26	0.02%	alpha-Terpinene	1014.00	Monoterpene
4	15.71	0.14%	Limonene	1029.50	Monoterpene
5	15.71	Co-Eluting	1,8-Cineole	1031.80	Monoterpene Ether
6	15.93	0.75%	Benzyl alcohol	1032.00	Simple Phenolic
7	16.10	0.03%	(Z)-beta-Ocimene	1037.80	Monoterpene
8	16.44	0.08%	(E)-beta-Ocimene	1047.70	Monoterpene
9	17.98	0.03%	Terpinolene	1092.10	Monoterpene
10	18.36	0.09%	Linalool	1099.00	Monoterpenol
11	19.06	69.14%	2-Phenylethanol	1116.30	Simple Phenolic
12	19.42	0.02%	trans-Rose oxide	1127.33	Monoterpene Ether
13	21.11	0.02%	2-Phenylethyl formate	1174.50	Monoterpene Ester
14	22.81	8.03%	Citronellol	1229.25	Monoterpenol
15	22.81	Co-Eluting	Nerol	1230.67	Monoterpenol
16	23.27	0.06%	Neral	1246.57	Monoterpene Aldehyde
17	23.66	2.12%	Geraniol	1255.29	Monoterpenol
18	23.77	0.38%	2-Phenylethyl acetate	1257.00	Phenolic Ester
19	24.21	0.06%	Geranial	1272.00	Monoterpene Aldehyde
20	26.71	0.18%	Citronellyl acetate	1357.83	Monoterpene Ester
21	26.97	0.58%	Eugenol	1365.89	Phenylpropanoid
22	27.62	0.17%	Geranyl acetate	1378.50	Monoterpene Ester
23	28.28	0.86%	Methyl Eugenol	1407.27	Phenylpropanoid
24	28.97	0.16%	beta-Caryophyllene	1427.14	Sesquiterpene
25	29.44	0.12%	alpha-Guaiene	1438.67	Sesquiterpene
26	29.97	0.09%	alpha-Humulene	1461.43	Sesquiterpene
27	30.94	0.13%	Pentadecane	1500.00	Alkane
28	31.25	0.09%	(E,E)-alpha-Farnesene	1508.14	Sesquiterpene
29	31.39	0.12%	delta-Guaiene	1511.50	Sesquiterpene
30	36.19	0.97%	Tetradecanol	1677.67	Monoterpenol
31	40.39	2.75%	Nonadecene	1855.00	Alkene
32	40.95	6.28%	Nonadecane	1900.00	Alkane
33	43.15	0.39%	Eicosane	2000.00	Alkane
34	45.26	1.60%	Heneicosane	2100.00	Alkane
35	49.00	0.59%	Docosane	2200.00	Alkane
36	49.12	0.33%	Tricosane	2300.00	Alkane
37	49.33	0.15%	Tetracosane	2400.00	Alkane
38	50.09	0.12%	Hexacosane	2600.00	Alkane
39	51.03	0.54%	Heptacosane	2700.00	Alkane
40	51.18	0.14%	Nonacosane	2900.00	Alkane