

Client

**Nature's FUSIONS**  
ESSENTIAL OILS

Source

Turmeric (*Curcuma longa*)  
NF-TURM-19-A

Sample

**Turmeric (*Curcuma longa*)**

Batch #:..... | NF-TURM-19-A

Type:..... | Essential Oil

CAS Number:... | 84775-52-0

Nature's Fusions

Client

**Nature's FUSIONS**  
ESSENTIAL OILS

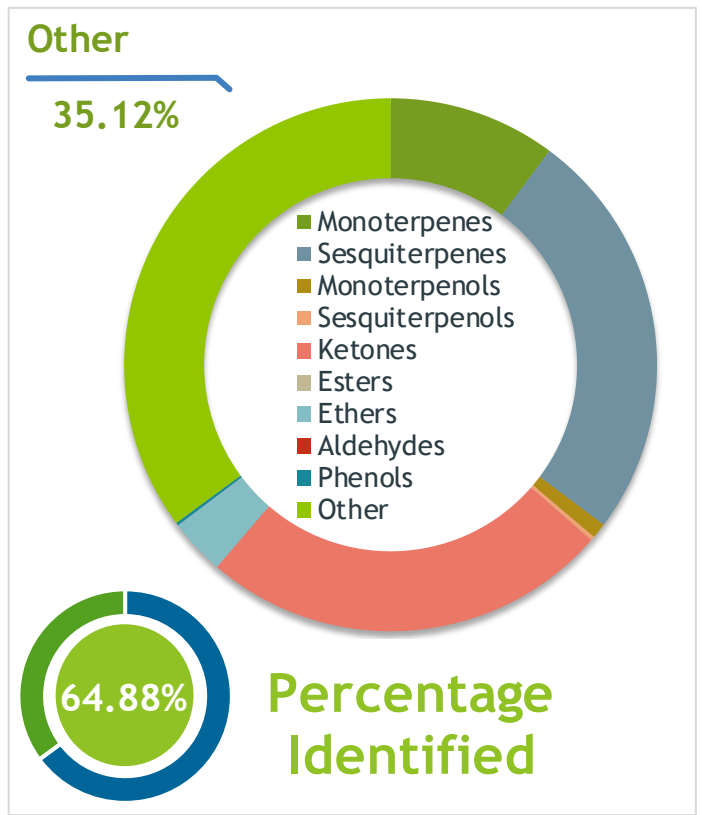
Website

Primary

**21.93%** | ar-Turmerone

**7.66%** | ar-Curcumene

**7.26%** | alpha-Tumerone



Result

Conclusion

No adulterants, diluents, or contaminants were detected via this method. This oil meets the expected profile for genuine essential oil of Turmeric (*Curcuma longa*)

Internal Number: | EVS-2867

**Essential Validation Services**

747 SW 2nd Ave IMB 12 Suite 306  
Gainesville, FL 32601

317.361.5044 | <https://essentialvalidationservices.com/>

adam@essentialvalidationservices.com

|                 |        |        |
|-----------------|--------|--------|
| Monoterpenes    | 10.17% | 10.17% |
| Sesquiterpenes  | 25.08% | 25.08% |
| Monoterpenols   | 0.93%  | 0.93%  |
| Sesquiterpenols | 0.25%  | 0.25%  |
| Ketones         | 24.87% | 24.87% |
| Esters          | 0.00%  | 0.00%  |
| Ethers          | 3      | 3.41%  |
| Aldehydes       | 0.00%  | 0.00%  |
| Phenols         | 0.17%  | 0.17%  |
| Other           | 35.12% | 35.12% |

ESSENTIAL VALIDATION SERVICES | 747 SW 2<sup>ND</sup> AVE GAINESVILLE, FLORIDA 32601 | 317-361-5044

Client


**Nature's FUSIONS**  
 ESSENTIAL OILS

Source



*Turmeric (Curcuma longa)*  
 NF-TURM-19-A

| Total Percentage |       | 64.88% |                         |         |                    |
|------------------|-------|--------|-------------------------|---------|--------------------|
| Number           | RT    | Area % | Compound Name           | RI      | Chemical Family    |
| 1                | 6.52  | 0.06%  | Toluene                 | 765.00  | Simple Phenolic    |
| 2                | 12.86 | 0.14%  | alpha-Pinene            | 936.10  | Monoterpene        |
| 3                | 14.67 | 0.01%  | beta-Pinene             | 974.00  | Monoterpene        |
| 4                | 15.09 | 0.02%  | 6-Methyl-5-hepten-2-one | 982.00  | Aliphatic Ketone   |
| 5                | 15.26 | 0.16%  | Myrcene                 | 989.20  | Monoterpene        |
| 6                | 15.67 | 0.02%  | 2-Carene                | 1001.75 | Monoterpene        |
| 7                | 15.83 | 3.17%  | alpha-Phellandrene      | 1002.00 | Monoterpene        |
| 8                | 16.07 | 0.12%  | delta-3-Carene          | 1008.00 | Monoterpene        |
| 9                | 16.34 | 0.21%  | alpha-Terpinene         | 1014.00 | Monoterpene        |
| 10               | 16.67 | 3.63%  | para-Cymene             | 1024.30 | Monoterpene        |
| 11               | 16.85 | 0.83%  | Limonene                | 1029.50 | Monoterpene        |
| 12               | 16.95 | 3.16%  | 1,8-Cineole             | 1031.80 | Monoterpene Ether  |
| 13               | 17.64 | 0.01%  | (E)-beta-Ocimene        | 1047.70 | Monoterpene        |
| 14               | 18.10 | 0.16%  | gamma-Terpinene         | 1054.00 | Monoterpene        |
| 15               | 19.32 | 1.31%  | Terpinolene             | 1092.10 | Monoterpene        |
| 16               | 19.74 | 0.02%  | Linalool                | 1099.00 | Monoterpenol       |
| 17               | 21.00 | 0.11%  | Limona ketone           | 1134.50 | Simple Phenolic    |
| 18               | 21.58 | 0.08%  | Camphor                 | 1147.55 | Monoterpene Ketone |
| 19               | 22.82 | 0.14%  | Terpinen-4-ol           | 1180.57 | Monoterpenol       |
| 20               | 23.07 | 0.30%  | para-Cymen-8-ol         | 1185.25 | Monoterpenol       |
| 21               | 23.32 | 0.14%  | gamma-Terpineol         | 1198.50 | Monoterpenol       |
| 22               | 25.64 | 0.02%  | Piperitone              | 1258.50 | Monoterpene Ketone |
| 23               | 26.88 | 0.23%  | Thymol                  | 1288.15 | Monoterpenol       |
| 24               | 27.22 | 0.10%  | Carvacrol               | 1304.40 | Monoterpenol       |
| 25               | 31.40 | 1.85%  | beta-Caryophyllene      | 1427.14 | Sesquiterpene      |
| 26               | 32.03 | 0.26%  | Vestitenone             | 1457.50 | Terpenic Ketone    |
| 27               | 32.14 | 2.24%  | Thujopsadiene           | 1465.10 | Sesquiterpene      |
| 28               | 32.31 | 0.36%  | (Z)-beta-Farnesene      | 1453.40 | Sesquiterpene      |
| 29               | 32.48 | 0.38%  | alpha-Humulene          | 1461.43 | Sesquiterpene      |
| 30               | 32.62 | 0.67%  | Amorpha-4,11-diene      | 1462.00 | Sesquiterpene      |
| 31               | 33.12 | 1.23%  | alpha-Acoradiene        | 1463.00 | Sesquiterpene      |
| 32               | 33.24 | 7.66%  | ar-Curcumene            | 1480.50 | Sesquiterpene      |
| 33               | 33.61 | 4.39%  | alpha-Zingiberene       | 1491.75 | Sesquiterpene      |
| 34               | 34.02 | 1.55%  | beta-Bisabolene         | 1509.86 | Sesquiterpene      |
| 35               | 34.10 | 0.40%  | beta-Curcumene          | 1512.00 | Monoterpene        |

 ESSENTIAL VALIDATION SERVICES | 747 SW 2<sup>ND</sup> AVE GAINESVILLE, FLORIDA 32601 | 317-361-5044

Client



Source



Turmeric (*Curcuma longa*)  
NF-TURM-19-A

| Number | RT    | Area % | Compound Name           | RI      | Chemical Family      |
|--------|-------|--------|-------------------------|---------|----------------------|
| 36     | 34.5  | 3.91%  | beta-Sesquiphellandrene | 1524.57 | Monoterpene          |
| 37     | 34.74 | 0.34%  | trans-gamma-Bisabolene  | 1535.65 | Sesquiterpene        |
| 38     | 34.99 | 0.06%  | Selina-3,7(11)-diene    | 1544.50 | Sesquiterpene        |
| 39     | 35.50 | 0.44%  | beta-Calacorene         | 1555.50 | Sesquiterpene        |
| 40     | 36.10 | 0.25%  | Turmerol                | 1580.10 | Sesquiterpenol       |
| 41     | 36.45 | 0.25%  | Caryophyllene oxide     | 1594.86 | Sesquiterpene Ether  |
| 42     | 36.55 | 0.63%  | ar-Dihydroturmerone     | 1591.00 | Sesquiterpene Ketone |
| 43     | 38.70 | 21.93% | ar-Turmerone            | 1664.50 | Sesquiterpene Ketone |
| 44     | 38.78 | 7.26%  | alpha-Tumerone          |         |                      |
| 45     | 39.36 | 0.54%  | (Z)-gamma-Atlantone     | 1683.00 | Sesquiterpene Ketone |
| 46     | 39.65 | 4.55%  | beta-Turmerone          |         |                      |
| 47     | 39.95 | 0.25%  | (Z)-alpha-Atlantone     | 1707.50 | Sesquiterpene Ketone |
| 48     | 41.57 | 1.14%  | (E)-alpha-Atlantone     | 1773.10 | Sesquiterpene Ketone |
|        |       |        |                         |         |                      |
|        |       |        |                         |         |                      |
|        |       |        |                         |         |                      |
|        |       |        |                         |         |                      |
|        |       |        |                         |         |                      |
|        |       |        |                         |         |                      |
|        |       |        |                         |         |                      |
|        |       |        |                         |         |                      |
|        |       |        |                         |         |                      |
|        |       |        |                         |         |                      |
|        |       |        |                         |         |                      |
|        |       |        |                         |         |                      |
|        |       |        |                         |         |                      |
|        |       |        |                         |         |                      |
|        |       |        |                         |         |                      |
|        |       |        |                         |         |                      |
|        |       |        |                         |         |                      |
|        |       |        |                         |         |                      |
|        |       |        |                         |         |                      |
|        |       |        |                         |         |                      |

ESSENTIAL VALIDATION SERVICES | 747 SW 2<sup>ND</sup> AVE GAINESVILLE, FLORIDA 32601 | 317-361-5044