



# *Essential Validation Services*



## Sample:

---

Client: | Nature's Fusions  
Sample: | Ylang Ylang III (Cananga odorata)  
Batch # | 14-1-180007176  
CAS Number | 8006-81-3  
Type: | Essential Oil

---

## Conclusion:

- No adulterants, diluents, or contaminants were detected via this method.
- This oil meets the expected profile for genuine essential oil of Ylang Ylang (Cananga odorata).



X 

Validated By:

Essential Validation Services

747 SW 2nd Ave, Gainesville, FL 32601

Phone: 317-361-5044 E-mail: Adam@essentialvalidationservices.com

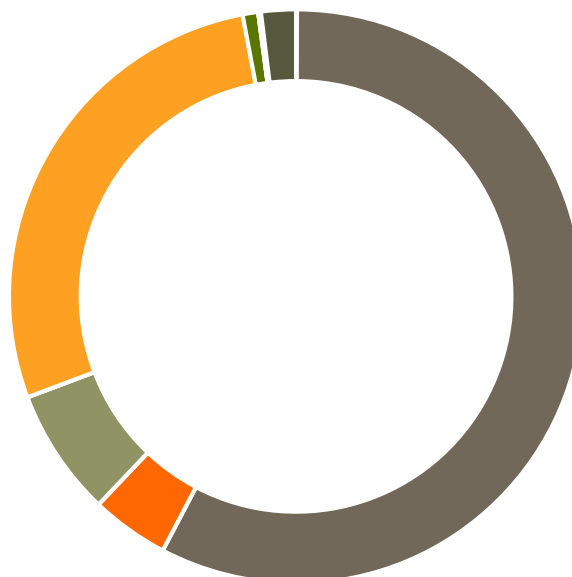
## Summary of Analyses

---

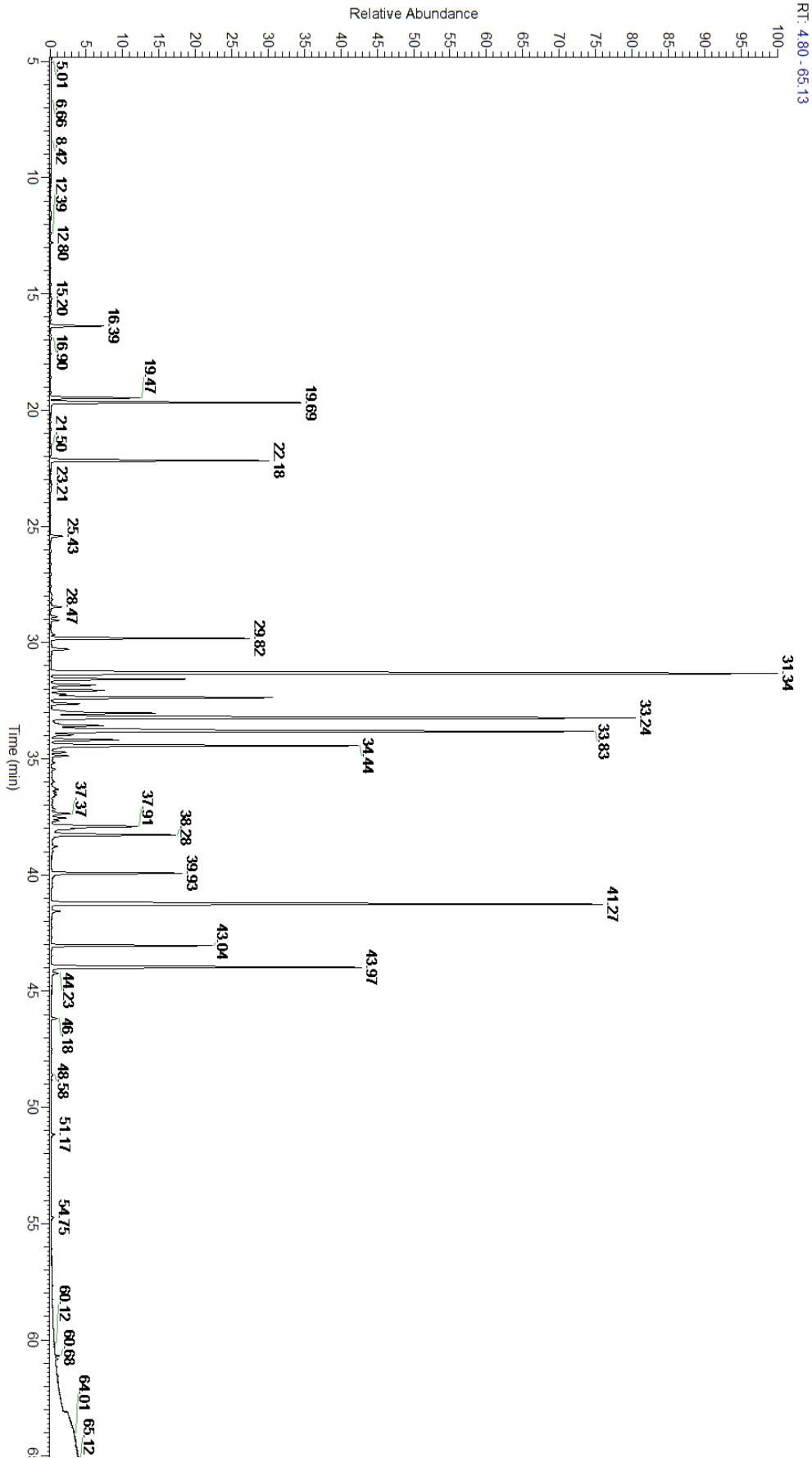
A fresh sample of Ylang Ylang (Cananga odorata) Essential Oil (10 uL in .5to.5 mL Hexane + ETOH) was prepared and analyzed via split injection GC/EI-MS.

Main Compounds	Percentages
beta-Caryophyllene	16.47%
Germacrene D	11.40%
(E,E)-alpha-Farnesene	11.34%
Benzyl benzoate	10.87%
Benzyl salicylate	5.43%
delta-Cadinene	5.03%
Linalool	4.15%
alpha-Humulene	4.07%
Benzyl acetate	3.71%
Geranyl acetate	3.15%
T-Muurolol	2.36%
(E,E)-Farnesyl acetate	2.26%
trans-alpha-Bergamotene	2.20%

Monoterpenes	Sesquiterpenes	Monoterpenols	Sesquiterpenols	Ketones
0.05%	57.64%	4.39%	7.20%	0.00%
Esters	Ethers	Aldehydes	Phenols	Other
27.73%	0.88%	0.00%	0.15%	1.96%



- Monoterpenes   ■ Sesquiterpenes   ■ Monoterpenols
- Sesquiterpenols   ■ Ketones   ■ Esters
- Ethers   ■ Phenols   ■ Other



Total Percentage		98.04%			
Peak Number	RT	Area %	Compound Name	RI	Chemical Family
1	12.80	0.03%	alpha-Pinene	936.10	Monoterpene
2	15.20	0.02%	Myrcene	989.20	Monoterpene
3	16.39	0.86%	p-Cresyl methyl ether	1015.00	Monoterpene Ether
4	16.90	0.02%	1,8-Cineole	1031.80	Monoterpene Ether
5	18.61	0.01%	para-Cresol	1078.80	Phenol
6	19.24	0.01%	trans-Linalool oxide (5) (furanoid)	1092.20	Monoterpenol
7	19.47	1.48%	Methyl benzoate	1096.10	Phenolic Ester
8	19.69	4.15%	Linalool	1099.00	Monoterpenol
9	22.18	3.71%	Benzyl acetate	1161.25	Phenolic Ester
10	23.21	0.02%	alpha-Terpineol	1191.71	Monoterpenol
11	23.48	0.01%	Methyl chavicol	1193.40	Phenylpropanoid
12	25.43	0.21%	Geraniol	1255.29	Monoterpenol
13	28.47	0.19%	delta-Elemene	1335.83	Sesquiterpene
14	28.88	0.10%	alpha-Cubebene	1355.71	Sesquiterpene
15	29.04	0.13%	Eugenol	1365.89	Phenylpropanoid
16	29.82	3.15%	Geranyl acetate	1379.20	Monoterpene Ester
17	30.30	0.35%	beta-Elemene	1389.20	Sesquiterpene
18	31.34	16.47%	beta-Caryophyllene	1427.14	Sesquiterpene
19	31.58	2.20%	trans-alpha-Bergamotene	1435.00	Sesquiterpene
20	31.83	0.74%	(E)-Cinnamyl acetate	1443.50	Phenylpropanoid Ester
21	32.06	0.90%	(Z)-beta-Farnesene	1453.40	Sesquiterpene
22	32.23	0.26%	cis-Muurolo-3,5-diene	1456.75	Sesquiterpene
23	32.37	4.07%	alpha-Humulene	1461.43	Sesquiterpene
24	32.64	0.47%	allo-Aromadendrene	1471.00	Sesquiterpene
25	33.04	2.01%	gamma-Muurolole	1478.86	Sesquiterpene
26	33.24	11.40%	Germacrene D	1484.71	Sesquiterpene
27	33.49	0.07%	Bicyclogermacrene	1490.71	Sesquiterpene
28	33.58	0.87%	alpha-Muurolole	1500.25	Sesquiterpene
29	33.83	11.34%	(E,E)-alpha-Farnesene	1508.14	Sesquiterpene
30	33.97	0.37%	beta-Bisabolene	1509.86	Sesquiterpene
31	34.19	1.05%	gamma-Cadinene	1515.29	Sesquiterpene
32	34.44	5.03%	delta-Cadinene	1524.14	Sesquiterpene
33	34.74	0.22%	trans-alpha-Bisabolene	1537.33	Sesquiterpene
34	34.88	0.27%	alpha-Cadinene	1537.86	Sesquiterpene
35	35.46	0.06%	(E)-Nerolidol	1567.00	Sesquiterpenol
36	37.37	0.33%	1-epi-Cubenol	1628.00	Sesquiterpenol
37	37.91	1.97%	T-Cadinol	1640.43	Sesquiterpenol
38	38.03	0.39%	Cubenol	1642.14	Sesquiterpenol
39	38.28	2.36%	T-Muurolol	1643.29	Sesquiterpenol
40	39.93	2.07%	(Z,E)-Farnesol	1723.00	Sesquiterpenol
41	40.36	0.02%	(E,E)-Farnesol	1742.60	Sesquiterpenol
42	41.27	10.87%	Benzyl benzoate	1752.00	Phenolic Ester
43	43.04	2.26%	(E,E)-Farnesyl acetate	1839.67	Sesquiterpene Ester

