

Client



Source



Clary Sage (*Salvia sclarea*)
NF-CLAS-19-A

Sample

Clary Sage (*Salvia sclarea*)
Batch #:..... NF-CLAS-19-A
Type:..... Essential Oil
CAS Number:... 8016-63-5
Nature's Fusions

Client



Website

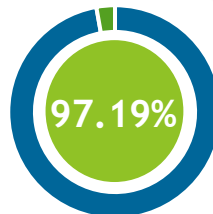
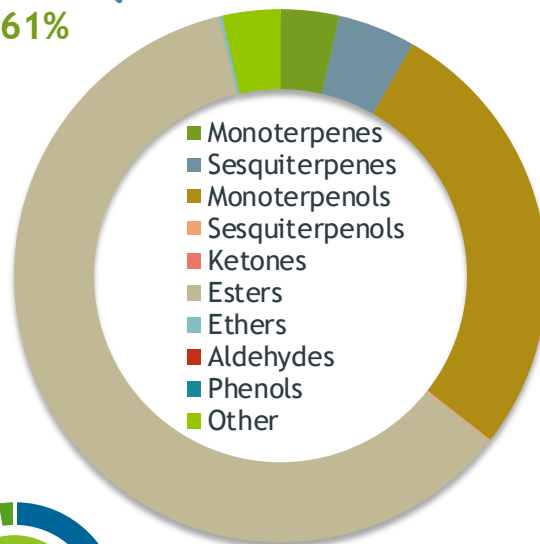


Primary

56.00% | Linalyl acetate
22.81% | Linalool
4.13% | alpha-Terpineol

Esters

60.61%



Percentage Identified

Result



Conclusion

No adulterants, diluents, or contaminants were detected via this method. This oil meets the expected profile for genuine essential oil of Clary Sage (*Salvia sclarea*)

Internal Number: | EVS-2899



Essential Validation Services

747 SW 2nd Ave IMB 12 Suite 306
Gainesville, FL 32601

317.361.5044 |
<https://essentialvalidationservices.com/>
adam@essentialvalidationservices.com

Monoterpenes	3.56%
Sesquiterpenes	4.70%
Monoterpenols	27.30%
Sesquiterpenols	0.10%
Ketones	0.00%
Esters	60.61%
Ethers	0.21%
Aldehydes	0.00%
Phenols	0.00%
Other	3.52%

Client


Nature's FUSIONS
 ESSENTIAL OILS

Source



Clary Sage (Salvia sclarea)
 NF-CLAS-19-A

Total Percentage		97.19%			
Number	RT	Area %	Compound Name	RI	Chemical Family
1	9.62	0.02%	trans-Hex-2-en-1-ol	854.50	Aliphatic Alcohol
2	10.16	0.07%	trans-Hex-2-en-1-ol	854.50	Aliphatic Alcohol
3	10.26	0.05%	1-Hexanol	863.00	Aliphatic Alcohol
4	12.85	0.11%	alpha-Pinene	936.10	Monoterpene
5	13.47	0.02%	Camphene	950.30	Monoterpene
6	14.53	0.02%	Sabinene	973.00	Monoterpene
7	14.65	0.10%	beta-Pinene	974.00	Monoterpene
8	14.77	0.03%	1-Octen-3-ol	980.00	Aliphatic Alcohol
9	15.25	1.19%	Myrcene	989.20	Monoterpene
10	15.94	0.08%	Pseudolimonene	1003.00	Monoterpene
11	16.65	0.02%	para-Cymene	1024.30	Monoterpene
12	16.83	0.51%	Limonene	1029.50	Monoterpene
13	17.19	0.34%	(Z)-beta-Ocimene	1037.80	Monoterpene
14	17.62	0.71%	(E)-beta-Ocimene	1047.70	Monoterpene
15	19.30	0.20%	Terpinolene	1092.10	Monoterpene
16	19.82	22.81%	Linalool	1099.00	Monoterpenol
17	19.92	0.09%	Alloocimene	1129.90	Monoterpene
18	20.88	0.02%	Borneol	1168.71	Monoterpenol
19	22.80	0.05%	Terpinen-4-ol	1180.57	Monoterpenol
20	23.30	4.13%	alpha-Terpineol	1191.71	Monoterpenol
21	24.16	0.29%	Nerol	1230.67	Monoterpenol
22	25.71	56.00%	Linalyl acetate	1263.80	Monoterpene Ester
23	26.75	0.06%	Lavandulyl acetate	1285.00	Monoterpene Ester
24	27.18	0.14%	Bornyl acetate	1288.29	Monoterpene Ester
25	29.24	1.40%	Neryl acetate	1362.90	Monoterpene Ester
26	29.87	3.01%	Geranyl acetate	1379.20	Monoterpene Ester
27	30.19	0.13%	beta-Bourbonene	1388.70	Sesquiterpene
28	30.34	0.16%	beta-Elemene	1389.20	Sesquiterpene
29	31.34	1.55%	beta-Caryophyllene	1427.14	Sesquiterpene
30	32.42	0.08%	alpha-humulene	1461.43	Sesquiterpene
31	33.27	2.13%	Germacrene D	1484.71	Sesquiterpene
32	33.44	0.17%	1-epi-Bicyclosesquiphellandrene	1489.25	Monoterpene
33	33.75	0.37%	Bicyclogermacrene	1490.71	Sesquiterpene
34	33.84	0.14%	alpha-Muurolene	1500.25	Sesquiterpene
35	34.48	0.14%	delta-Cadinene	1524.14	Sesquiterpene

 ESSENTIAL VALIDATION SERVICES | 747 SW 2ND AVE GAINESVILLE, FLORIDA 32601 | 317-361-5044

Client



Source



Clary Sage (*Salvia sclarea*)
NF-CLAS-19-A

Number	RT	Area %	Compound Name	RI	Chemical Family
36	36.38	0.21%	Caryophyllene oxide	1594.86	Sesquiterpene
37	38.28	0.10%	beta-Eudesmol	1650.75	Sesquiterpenol
38	52.32	0.54%	Sclareol	2207.00	Diterpenol

ESSENTIAL VALIDATION SERVICES | 747 SW 2ND AVE GAINESVILLE, FLORIDA 32601 | 317-361-5044



Essential Validation Services





Sample:

Client: | Nature's Fusions
Sample: | Clary Sage (Salvia sclarea)
Batch # | MM4262106
Cas Number | 8016-63-5
Type: | Essential Oil

Conclusion:

- No adulterants, diluents, or contaminants were detected via this method.



X *Adam Christen*

Validated By:

Essential Validation Services

747 SW 2nd Ave, Gainesville, FL 32601

Phone: 317-361-5044 E-mail: Adam@essentialvalidationservices.com

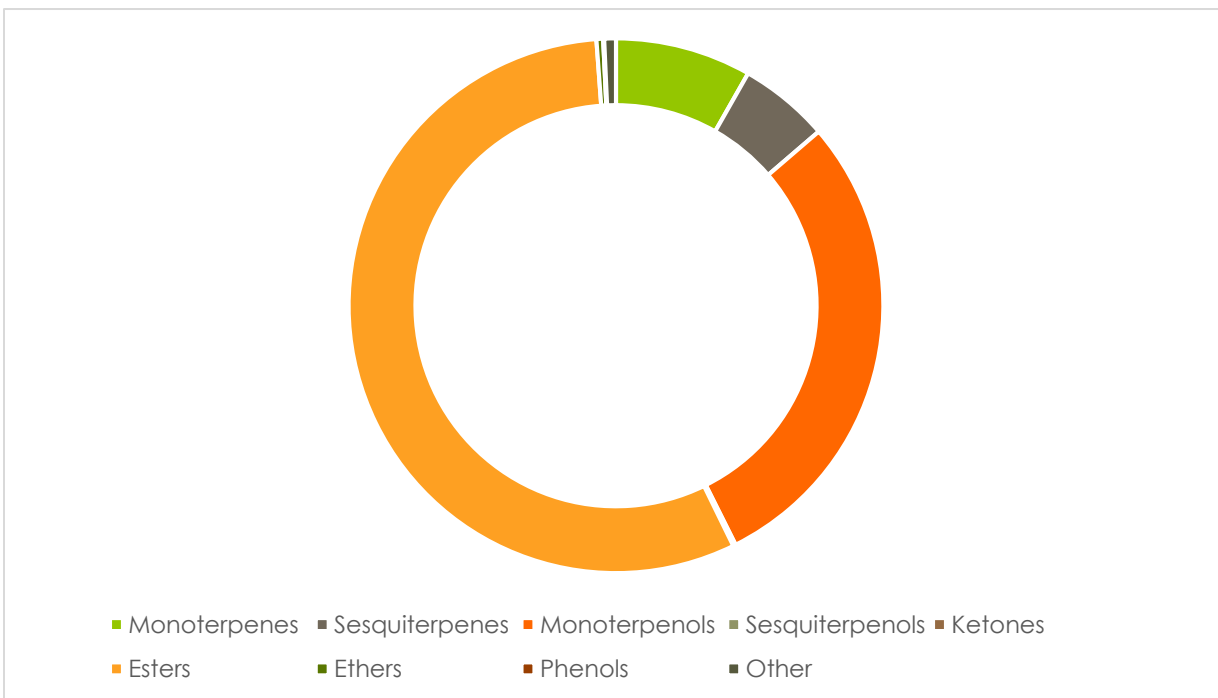
Summary of Analyses

A fresh sample of Clary Sage (Salvia sclarea) Essential Oil (10 uL in .5to.5 mL Hexane + ETOH) was prepared and analyzed via split injection GC/EI-MS.



Main Compounds	Percentages
Linalyl acetate	51.73%
Linalool	26.81%
beta-Caryophyllene	4.22%
Limonene	3.38%
Myrcene	2.96%
Geranyl acetate	2.14%
Neryl acetate	1.35%
(E)-beta-Ocimene	1.28%
alpha-Terpineol	1.25%

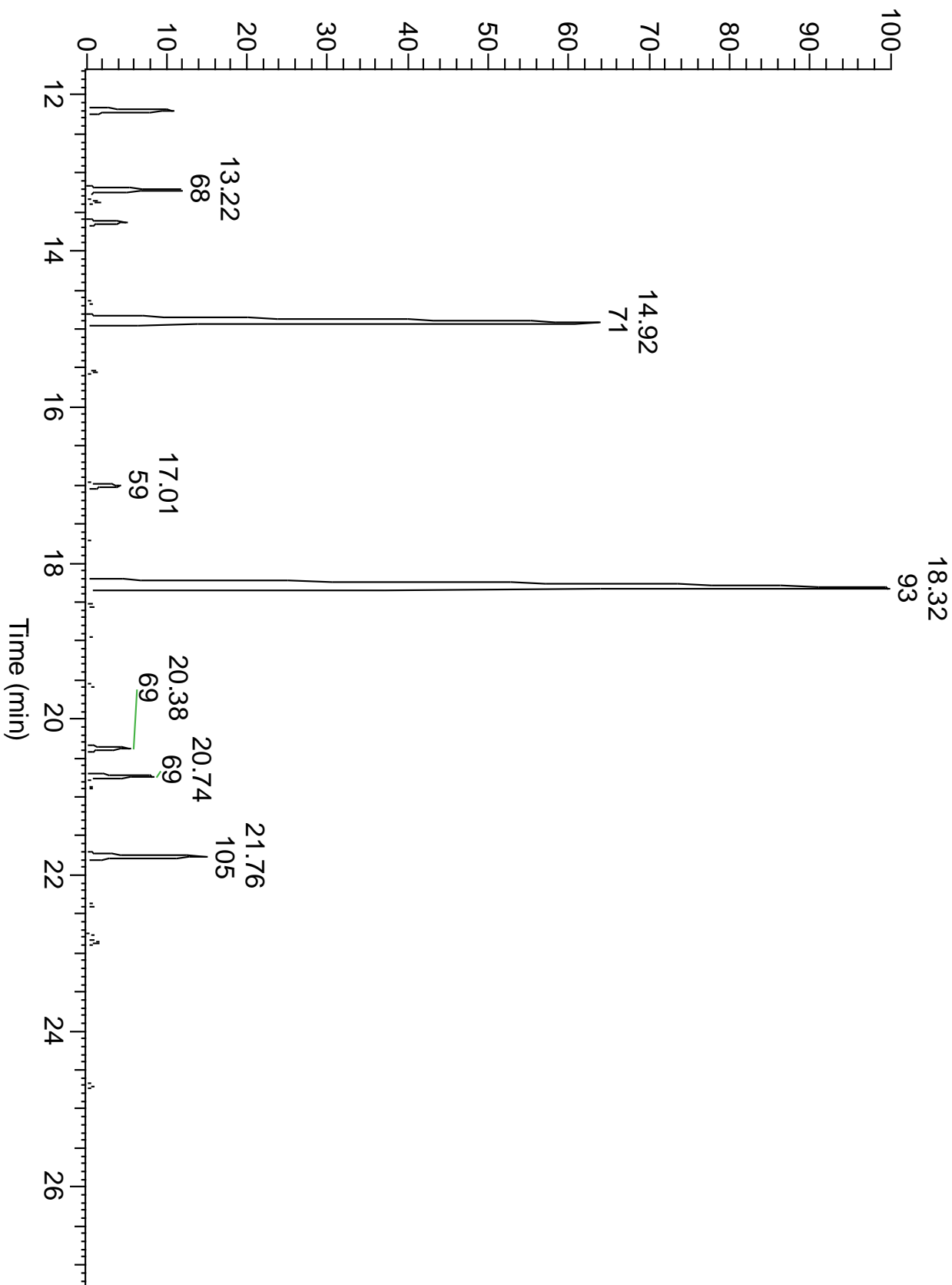
Monoterpenes	Sesquiterpenes	Monoterpenols	Sesquiterpenols	Ketones
8.15%	5.42%	28.63%	0.06%	0.09%
Esters	Ethers	Aldehydes	Phenols	Other
55.51%	0.40%	0.06%	0.00%	0.70%



ESSENTIAL VALIDATION SERVICES | 747 SW 2ND AVE GAINESVILLE, FLORIDA 32601 | 317-361-5044



RT: 11.66 - 27.33



ESSENTIAL VALIDATION SERVICES | 747 SW 2ND AVE GAINESVILLE, FLORIDA 32601 | 317-361-5044



Total Percentage	99.02%				
Peak Number	RT	Area %	Compound Name	RI	Chemical Family
1	8.56	0.06%	(E)-2-Hexenal	853.00	Aldehydes
2	8.84	0.03%	(Z)-3-Hexenol	860.00	Aliphatic Alcohols
3	10.73	0.03%	alpha-Pinene	936.10	Monoterpenes
4	12.20	2.96%	Myrcene	989.20	Monoterpenes
5	12.65	0.04%	alpha-Phellandrene	1004.10	Monoterpenes
6	13.11	0.04%	para-Cymene	1024.30	Monoterpenes
7	13.22	3.38%	Limonene	1029.50	Monoterpenes
8	13.31	0.07%	1,8-Cineole	1031.80	Ethers
9	13.31	Co-Eluting	beta-Phellandrene	1030.00	Monoterpenes
10	13.37	0.42%	(Z)-beta-Ocimene	1037.80	Monoterpenes
11	13.64	1.28%	(E)-beta-Ocimene	1047.70	Monoterpenes
12	14.28	0.04%	cis-Linalool oxide (5) (furanoid)	1075.10	Monoterpenols
13	14.66	0.24%	cis-Linalool oxide (5) (furanoid)	1075.10	Monoterpenols
14	14.92	26.81%	Linalool	1099.00	Monoterpenols
15	15.54	0.33%	Alloocimene	1129.90	Other
16	16.06	0.09%	Camphor	1153.86	Ketones
17	16.52	0.11%	Borneol	1168.71	Monoterpenols
18	16.87	0.03%	Terpinen-4-ol	1180.57	Monoterpenols
19	17.01	1.25%	alpha-Terpineol	1191.71	Monoterpenols
20	17.73	0.15%	Geraniol	1258.29	Monoterpenols
21	18.32	51.73%	Linalyl acetate	1263.80	Esters
22	18.54	0.29%	Unknown (Mass 208)	#N/A	#N/A
23	18.81	0.05%	Unknown (Mass 208)	#N/A	#N/A
24	18.93	0.19%	Lavandulyl acetate	1285.00	Esters
25	19.00	0.07%	Bornyl acetate	1288.29	Esters
26	19.19	0.03%	Geranyl formate	1304.50	Esters
27	20.38	1.35%	Neryl acetate	1362.90	Esters
28	20.74	2.14%	Geranyl acetate	1384.71	Esters
29	20.88	0.20%	beta-Elemene	1388.30	Sesquiterpenes
30	21.12	0.14%	beta-Bourbonene	1388.70	Sesquiterpenes
31	21.76	4.22%	beta-Caryophyllene	1427.14	Sesquiterpenes
32	21.91	0.08%	beta-Copaene	1445.00	Sesquiterpenes
33	22.38	0.26%	alpha-Humulene	1461.43	Sesquiterpenes
34	22.86	0.47%	Germacrene D	1484.71	Sesquiterpenes
35	22.97	0.05%	Bicyclogermacrene	1495.71	Sesquiterpenes
36	24.56	0.06%	Spathulenol	1578.71	Sesquiterpenols
37	24.70	0.33%	Caryophyllene oxide	1594.86	Ethers