

Client



Source



Scotch Pine (*Pinus sylvestris*)
NF-PINE-21-A

Sample

Scotch Pine (*Pinus sylvestris*)
Batch #:..... NF-PINE-21-A
Type:..... Essential Oil
CAS Number:... 8023-99-2
Nature's Fusions

Client



Website

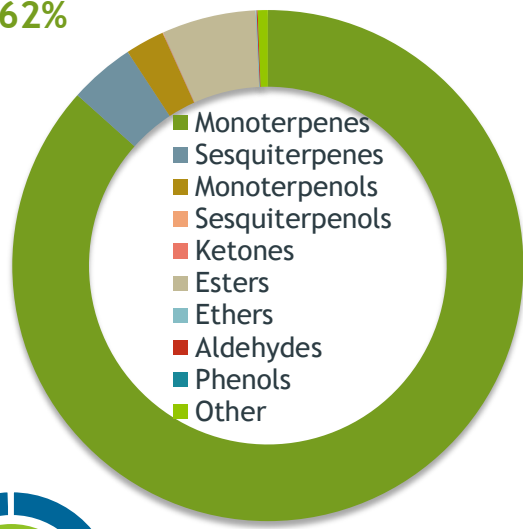


Primary

29.47% | alpha-Pinene
16.60 | Limonene
14.57% | delta-3-Carene

Monoterpenes

86.62%



Percentage Identified

Result



Conclusion

No adulterants, diluents, or contaminants were detected via this method. This oil meets the expected profile for genuine Essential Oil of Scotch Pine (*Pinus sylvestris*)

Internal Number: | EVS-4222



Essential Validation Services

747 SW 2nd Ave IMB 12 Suite 306
Gainesville, FL 32601

317.361.5044 |
<https://essentialvalidationservices.com/>

Alan Christen

Monoterpenes	86.62%	86.62%
Sesquiterpenes	4.14%	4.14%
Monoterpenols	2.48%	2.48%
Sesquiterpenols	0.01%	0.01%
Ketones	0.03%	0.03%
Esters	5.95%	5.95%
Ethers	0.07%	0.07%
Aldehydes	0.06%	0.06%
Phenols	0.00%	0.00%
Other	0.64%	0.64%

ESSENTIAL VALIDATION SERVICES | 747 SW 2ND AVE GAINESVILLE, FLORIDA 32601 | 317-361-5044

Client


 Nature's FUSIONS
ESSENTIAL OILS

Source

Scotch Pine (*Pinus sylvestris*)

NF-PINE-21-A

Total Percentage		99.70%		
Number	RT	Area %	Compound Name	Chemical Family
1	6.49	0.34%	Santene	Normonoterpene
2	7.86	0.39%	Tricyclene	Monoterpene
3	8.04	0.04%	alpha-Thujene	Monoterpene
4	8.33	29.47%	alpha-Pinene	Monoterpene
5	8.90	3.64%	Camphene	Monoterpene
6	9.06	0.01%	Thuja-2,4(10)-diene	Monoterpene
7	9.86	0.08%	Sabinene	Monoterpene
8	10.04	13.88%	beta-Pinene	Monoterpene
9	10.61	5.68%	Myrcene	Monoterpene
10	10.97	0.05%	3-p-Menthene	Monoterpene
11	11.15	0.30%	Pseudolimonene	Monoterpene
12	11.26	0.10%	alpha-Phellandrene	Monoterpene
13	11.39	14.57%	delta-3-Carene	Monoterpene
14	11.64	0.06%	1,4-Cineole	Monoterpene Ether
15	11.72	0.16%	alpha-Terpinene	Monoterpene
16	12.06	0.54%	para-Cymene	Monoterpene
17	12.30	16.60%	Limonene	Monoterpene
18	12.64	0.05%	(Z)-beta-Ocimene	Monoterpene
19	13.57	0.04%	gamma-Terpinene	Monoterpene
20	14.80	1.01%	Terpinolene	Monoterpene
21	15.00	0.01%	para-Cymenene	Monoterpene
22	15.53	0.06%	Linalool	Monoterpenol
23	17.52	0.03%	Camphor	Monoterpene Ketone
24	17.91	0.02%	Camphene hydrate	Monoterpenol
25	18.72	0.68%	Borneol	Monoterpenol
26	19.14	0.88%	Terpinen-4-ol	Monoterpenol
27	19.83	0.84%	alpha-Terpineol	Monoterpenol
28	20.43	0.03%	Decanal	Aliphatic Aldehyde
29	23.87	5.92%	Bornyl acetate	Monoterpene Ester
30	27.80	0.02%	alpha-Copaene	Sesquiterpene
31	28.05	0.03%	Geranyl acetate	Monoterpene Ester
32	29.13	0.02%	Longifolene	Sesquiterpene
33	29.36	0.03%	Dodecanal	Aliphatic Aldehyde
34	29.61	3.96%	beta-Caryophyllene	Sesquiterpene
35	31.07	0.10%	alpha-Humulene	Sesquiterpene

ESSENTIAL VALIDATION SERVICES | 747 SW 2ND AVE GAINESVILLE, FLORIDA 32601 | 317-361-5044

Client	 Nature's FUSIONS ESSENTIAL OILS	Source	
--------	--	--------	--

Scotch Pine (Pinus sylvestris)
NF-PINE-21-A

Number	RT	Area %	Compound Name	Chemical Family
36	33.321	0.02%	beta-Bisabolene	Sesquiterpene
37	34.05	0.02%	trans-gamma-Bisabolene	Sesquiterpene
38	36.04	0.01%	Caryophyllene oxide	Sesquiterpene Ether
39	40.03	0.01%	epi-alpha-Bisabolol	Sesquiterpenol

ESSENTIAL VALIDATION SERVICES | 74 SW 2ND AVE GAINESVILLE, FLORIDA 32601 | 352-301-5044

Client



Source



Scotch Pine (*Pinus sylvestris*)
NF-PINE-21-A

ESSENTIAL VALIDATION SERVICES | 14 SW 2nd AVE GAINESVILLE, FLORIDA 32601 | 311-361-5044

Client

Nature's FUSIONS
ESSENTIAL OILS

Source

Pine (*Pinus sylvestris*)
NF-PINE-19-B

Sample

Pine (*Pinus sylvestris*)

Batch #:..... | NF-PINE-19-B

Type:..... | Essential Oil

CAS Number:... | 8023-99-2

Nature's Fusions

Client

Nature's FUSIONS
ESSENTIAL OILS

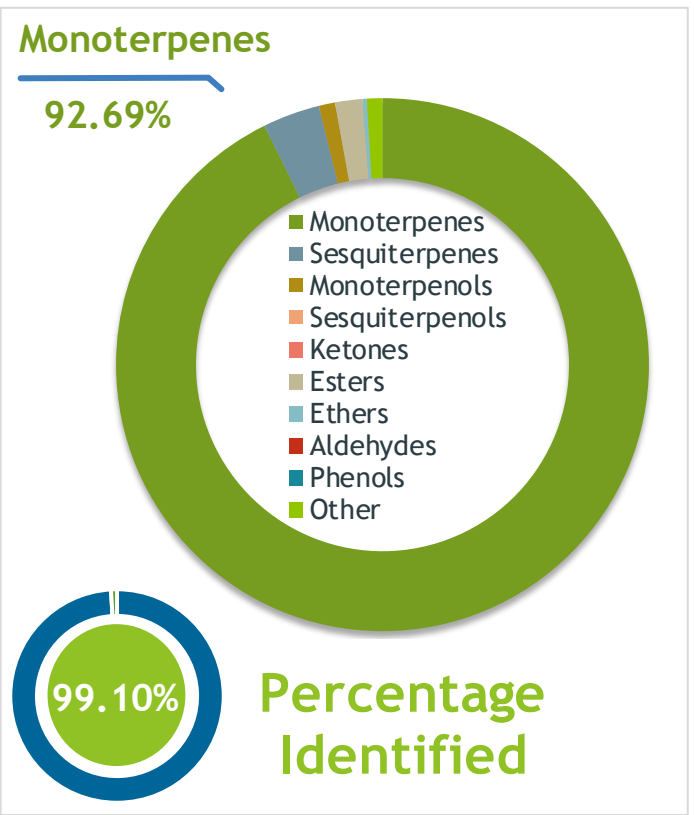
Website

Primary

35.92% | alpha-Pinene

21.51% | beta-Pinene

15.51% | delta-3-Carene



Result

Conclusion

No adulterants, diluents, or contaminants were detected via this method. This oil meets the expected profile for genuine essential oil of Pine (*Pinus sylvestris*)

Internal Number: | EVS-2882

Essential Validation Services

747 SW 2nd Ave IMB 12 Suite 306
Gainesville, FL 32601

317.361.5044 |
<https://essentialvalidation.com/>

adam@essentialvalidation.com

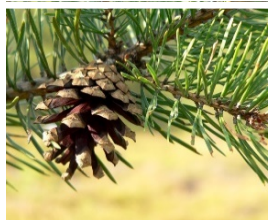
Monoterpenes	92.69%	92.69%
Sesquiterpenes	3.47%	3.47%
Monoterpenols	0.98%	0.98%
Sesquiterpenols	0.00%	0.00%
Ketones	0.00%	0.00%
Esters	1.67%	1.67%
Ethers	0.25%	0.25%
Aldehydes	0.00%	0.00%
Phenols	0.00%	0.00%
Other	0.94%	0.94%

ESSENTIAL VALIDATION SERVICES | 747 SW 2ND AVE GAINESVILLE, FLORIDA 32601 | 317-361-5044

Client


Nature's FUSIONS
 ESSENTIAL OILS

Source


Pine (Pinus sylvestris)
 NF-PINE-19-B

Total Percentage		99.10%			
Number	RT	Area %	Compound Name	RI	Chemical Family
1	10.87	0.04%	Santene	884.00	Normonoterpene
2	12.37	0.09%	Tricyclene	923.00	Monoterpene
3	12.61	0.02%	alpha-Thujene	927.80	Monoterpene
4	12.94	35.92%	alpha-Pinene	936.10	Monoterpene
5	13.49	1.22%	Camphene	950.30	Monoterpene
6	13.74	0.02%	Thuja-2,4(10)-diene	953.00	Monoterpene
7	14.43	0.03%	Sabinene	973.00	Monoterpene
8	14.71	21.51%	beta-Pinene	974.00	Monoterpene
9	15.28	3.70%	Myrcene	989.20	Monoterpene
10	15.83	0.34%	alpha-Phellandrene	1002.00	Monoterpene
11	16.12	15.51%	delta-3-Carene	1008.00	Monoterpene
12	16.35	1.28%	alpha-Terpinene	1014.00	Monoterpene
13	16.68	1.78%	para-Cymene	1024.30	Monoterpene
14	16.88	10.63%	Limonene	1029.50	Monoterpene
15	16.89	Co-Eluting	1,8-Cineole	1031.80	Monoterpene Ether
16	18.11	0.05%	gamma-Terpinene	1054.00	Monoterpene
17	19.32	0.57%	Terpinolene	1092.10	Monoterpene
18	19.75	0.02%	alpha-Pinene epoxide	1107.10	Monoterpene
19	20.35	0.04%	beta-Fenchol	1114.50	Monoterpenol
20	21.35	0.06%	alpha-Pinocarveol	1143.75	Monoterpenol
21	21.56	0.10%	trans-Verbenol	1149.00	Monoterpenol
22	22.39	0.09%	Borneol	1168.71	Monoterpenol
23	22.80	0.05%	Terpinen-4-ol	1180.57	Monoterpenol
24	23.06	0.03%	para-Cymen-8-ol	1185.25	Monoterpenol
25	23.29	0.54%	alpha-Terpineol	1191.71	Monoterpenol
26	23.54	0.07%	Myrtenol	1198.00	Monoterpenol
27	26.73	1.67%	Bornyl acetate	1288.29	Monoterpene Ester
28	29.07	0.08%	alpha-Longipinene	1357.90	Sesquiterpene
29	29.87	0.13%	alpha-Copaene	1379.00	Sesquiterpene
30	30.95	0.75%	Longifolene	1403.83	Sesquiterpene
31	31.35	2.06%	beta-Caryophyllene	1427.14	Sesquiterpene
32	32.43	0.26%	alpha-Humulene	1461.43	Sesquiterpene
33	34.49	0.19%	delta-Cadinene	1524.14	Sesquiterpene
34	36.39	0.25%	Caryophyllene oxide	1594.86	Sesquiterpene Ether

ESSENTIAL VALIDATION SERVICES | 747 SW 2ND AVE GAINESVILLE, FLORIDA 32601 | 317-361-5044

Client



Source



Pine (*Pinus sylvestris*)
NF-PINE-19-B

Number	RT	Area %	Compound Name	RI	Chemical Family

ESSENTIAL VALIDATION SERVICES | 747 SW 2ND AVE GAINESVILLE, FLORIDA 32601 | 317-361-5044