

Client



Source



Ylang Ylang (*Cananga odorata*)  
NF-YLY3-21-A

Sample

Ylang Ylang (*Cananga odorata*)  
Batch #:..... NF-YLY3-21-A  
Type:..... Essential Oil  
CAS Number:... 8006-81-3  
**Nature's Fusions**

Client



Website

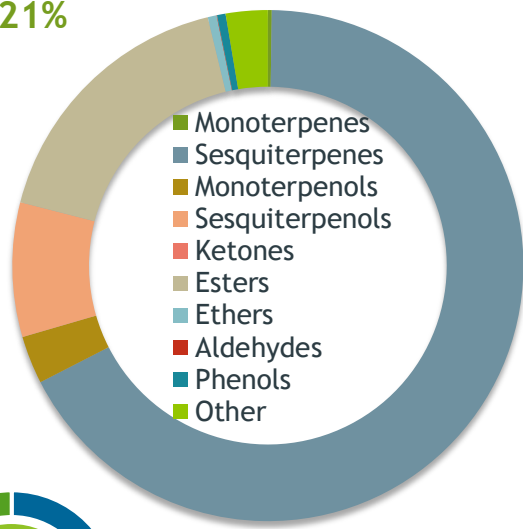


Primary

**17.23%** Germacrene D  
**16.32%** beta-Caryophyllene  
**11.02%** (E,E)-alpha-Farnesene

Sesquiterpenes

67.21%



Percentage Identified

Result



Conclusion

No adulterants, diluents, or contaminants were detected via this method. This oil meets the expected profile for genuine Essential Oil of Ylang Ylang (*Cananga odorata*)

Internal Number: | EVS-4255



Essential Validation Services

747 SW 2nd Ave IMB 12 Suite 306  
Gainesville, FL 32601

317.361.5044 | <https://essentialvalidationservices.com/>

*Alan Chastain*

Monoterpenes	0.25%
Sesquiterpenes	67.21%
Monoterpenols	3.03%
Sesquiterpenols	8.50%
Ketones	0.00%
Esters	17.23%
Ethers	0.56%
Aldehydes	0.03%
Phenols	0.54%
Other	2.65%

ESSENTIAL VALIDATION SERVICES | 747 SW 2<sup>ND</sup> AVE GAINESVILLE, FLORIDA 32601 | 317-361-5044

Client


 Nature's FUSIONS  
ESSENTIAL OILS

Source

Ylang Ylang (*Cananga odorata*)

NF-YLY3-21-A

Total Percentage		97.35%		
Number	RT	Area %	Compound Name	Chemical Family
1	7.91	0.01%	Prenyl acetate	Aliphatic Ester
2	8.29	0.10%	alpha-Pinene	Monoterpene
3	10.02	0.03%	beta-Pinene	Monoterpene
4	10.60	0.06%	Myrcene	Monoterpene
5	11.62	0.01%	Hexyl acetate	Aliphatic Ester
6	11.86	0.52%	para-Cresyl methyl ether	Monoterpene Ether
7	12.26	0.02%	Limonene	Monoterpene
8	12.37	0.04%	1,8-Cineole	Monoterpene Ether
9	12.51	0.01%	Benzyl alcohol	Simple Phenolic
10	12.64	0.01%	(Z)-beta-Ocimene	Monoterpene
11	13.11	0.01%	(E)-beta-Ocimene	Monoterpene
12	14.15	0.01%	cis-Linalool oxide (5) (furanoid)	Monoterpenol
13	14.41	0.02%	para-Cresol	Phenol
14	14.80	0.02%	Isoterpinolene	Monoterpene
15	15.18	0.35%	Methyl benzoate	Phenolic Ester
16	15.54	2.15%	Linalool	Monoterpenol
17	18.34	0.40%	Benzyl acetate	Phenolic Ester
18	18.69	0.01%	Ethyl benzoate	Phenolic Ester
19	19.66	0.01%	Methyl salicylate	Phenolic Ester
20	19.84	0.07%	alpha-Terpineol	Monoterpenol
21	19.98	0.03%	Methyl chavicol	Phenylpropanoid
22	21.25	0.02%	Nerol	Monoterpenol
23	21.83	0.01%	Neral	Monoterpene Aldehyde
24	22.45	0.75%	Geraniol	Monoterpenol
25	23.18	0.02%	Geranial	Monoterpene Aldehyde
26	23.95	0.02%	(E)-Anethole	Phenylpropanoid
27	24.42	0.03%	1-Nitro-2-phenyl ethane	Phenol
28	24.99	0.02%	4-Vinylguaicol	Simple Phenolic
29	25.53	0.01%	Ascaridole	Monoterpenol
30	25.96	0.17%	delta-Elemene	Sesquiterpene
31	26.62	0.22%	alpha-Cubebene	Sesquiterpene
32	26.82	0.38%	Eugenol	Phenylpropanoid
33	27.21	0.02%	Neryl acetate	Monoterpene Ester
34	27.54	0.17%	alpha-Ylangene	Sesquiterpene
35	27.82	1.42%	alpha-Copaene	Sesquiterpene

ESSENTIAL VALIDATION SERVICES | 747 SW 2<sup>ND</sup> AVE GAINESVILLE, FLORIDA 32601 | 317-361-5044

- Essential Oil testing is performed by using qualitative GC-MS. Method: SOP.T.01 Client Method  
 - This report may not be published without the consent of Essential Validation Services.  
 - Chromatograph image may be requested  
 - This report is valid for 1 year from the analyzed date

Client


**Nature's FUSIONS**  
 ESSENTIAL OILS

Source

Ylang Ylang (*Cananga odorata*)

NF-YLY3-21-A

Number	RT	Area %	Compound Name	Chemical Family
36	28.092	6.06%	Geranyl acetate	Sesquiterpene
37	28.44	0.57%	beta-Elemene	Sesquiterpene
38	28.95	0.03%	Methyl eugenol	Phenylpropanoid
39	29.30	0.01%	beta-Cubebene	Sesquiterpene
40	29.69	16.32%	beta-Caryophyllene	Sesquiterpene
41	29.85	0.01%	Thujopsene	Sesquiterpene
42	30.07	1.00%	beta-Copaene	Sesquiterpene
43	30.75	0.39%	(E)-Cinnamyl acetate	Phenylpropanoid Ester
44	30.85	0.39%	trans-Muurolo-3,5-diene	Sesquiterpene
45	30.92	0.36%	Aromadendrene	Sesquiterpene
46	31.11	4.44%	alpha-Humulene	Sesquiterpene
47	31.19	0.01%	(E)-beta-Farnesene	Sesquiterpene
48	31.37	0.28%	cis-Muurolo-4(14),5-diene	Sesquiterpene
49	31.84	0.31%	trans-Cadina-1(6),4-diene	Sesquiterpene
50	32.00	2.13%	gamma-Muurolo-4-diene	Sesquiterpene
51	32.23	17.23%	Germacrene D	Sesquiterpene
52	32.47	0.03%	beta-Selinene	Sesquiterpene
53	32.58	0.48%	Dauca-5,8-diene	Sesquiterpene
54	32.75	0.34%	Bicyclogermacrene	Sesquiterpene
55	32.93	1.31%	alpha-Muurolo-4-diene	Sesquiterpene
56	33.09	3.00%	(Z,E)-alpha-Farnesene	Sesquiterpene
57	33.32	11.02%	(E,E)-alpha-Farnesene	Sesquiterpene
58	33.48	1.21%	gamma-Cadinene	Sesquiterpene
59	33.58	0.04%	Eugenyl acetate	Phenylpropanoid Ester
60	33.75	3.96%	delta-Cadinene	Sesquiterpene
61	33.88	0.26%	Zonarene	Sesquiterpene
62	34.07	0.02%	trans-gamma-Bisabolene	Sesquiterpene
63	34.24	0.26%	trans-Cadina-1,4-diene	Sesquiterpene
64	34.41	0.28%	alpha-Cadinene	Sesquiterpene
65	34.87	0.07%	Elemol	Sesquiterpenol
66	35.44	0.13%	(E)-Nerolidol	Sesquiterpenol
67	35.75	0.02%	(Z)-3-Hexenyl benzoate	Monoterpene Ester
68	35.81	0.02%	Caryophyllenyl alcohol	Monoterpenol
69	35.91	0.07%	Maaliol	Sesquiterpenol
70	36.24	0.09%	Globulol	Sesquiterpenol
71	36.55	0.12%	Viridiflorol	Sesquiterpenol





## *Essential Validation Services*



**Sample:**

---

Client: | Nature's Fusions  
Sample: | Ylang Ylang (Cananga odorata)  
Batch # | 427411  
CAS Number | 8006-81-3  
Type: | Essential Oil

---

**Conclusion:**

- No adulterants, diluents, or contaminants were detected via this method.



X 

Validated By:

Essential Validation Services

747 SW 2nd Ave, Gainesville, FL 32601

Phone: 317-361-5044 E-mail: [Adam@essentialvalidationservices.com](mailto:Adam@essentialvalidationservices.com)

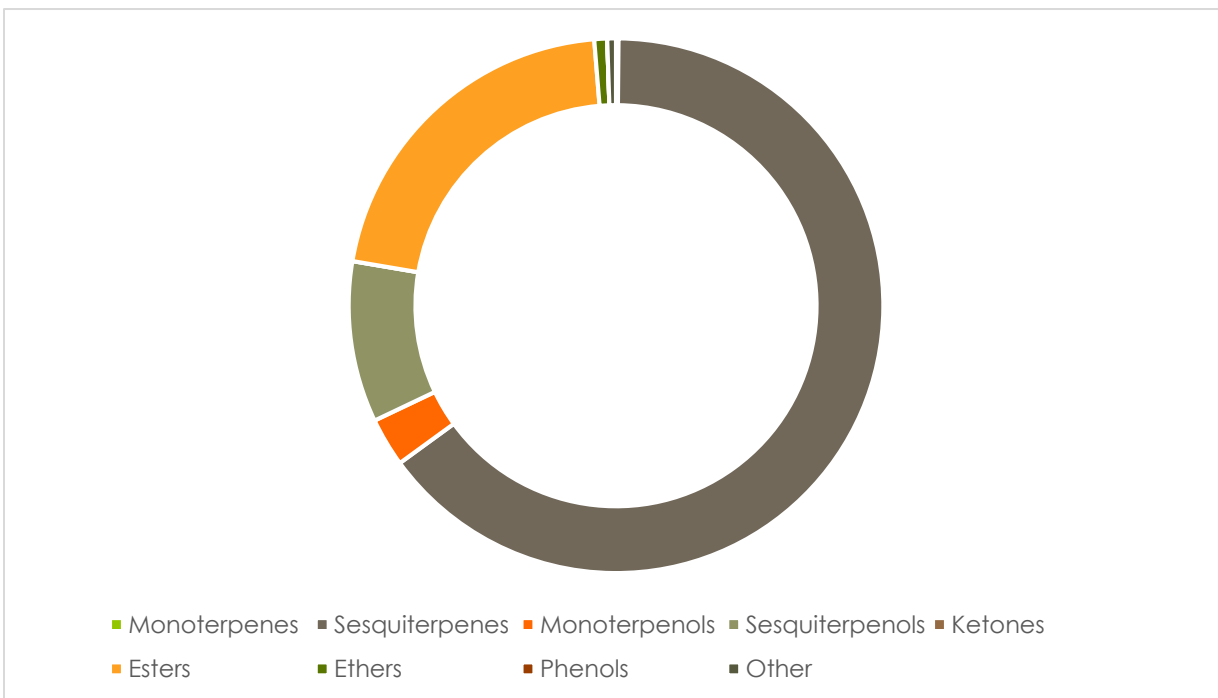
**Summary of Analyses**

---

A fresh sample of Ylang Ylang (Cananga odorata) Essential Oil (10 uL in .5to.5 mL Hexane + ETOH) was prepared and analyzed via split injection GC/EI-MS.

Main Compounds	Percentages
beta-Caryophyllene	19.30%
Germacrene D	11.65%
(Z,E)-alpha-Farnesene	9.01%
alpha-Humulene	5.39%
delta-Cadinene	5.01%
Geranyl acetate	3.92%
Geranyl acetate	3.92%
(E)-Cinnamyl acetate	2.99%
alpha-Muurolol	2.98%
gamma-Muurolene	2.82%
alpha-Muurolol	2.74%
Linalool	2.34%
beta-Cubebene	1.80%

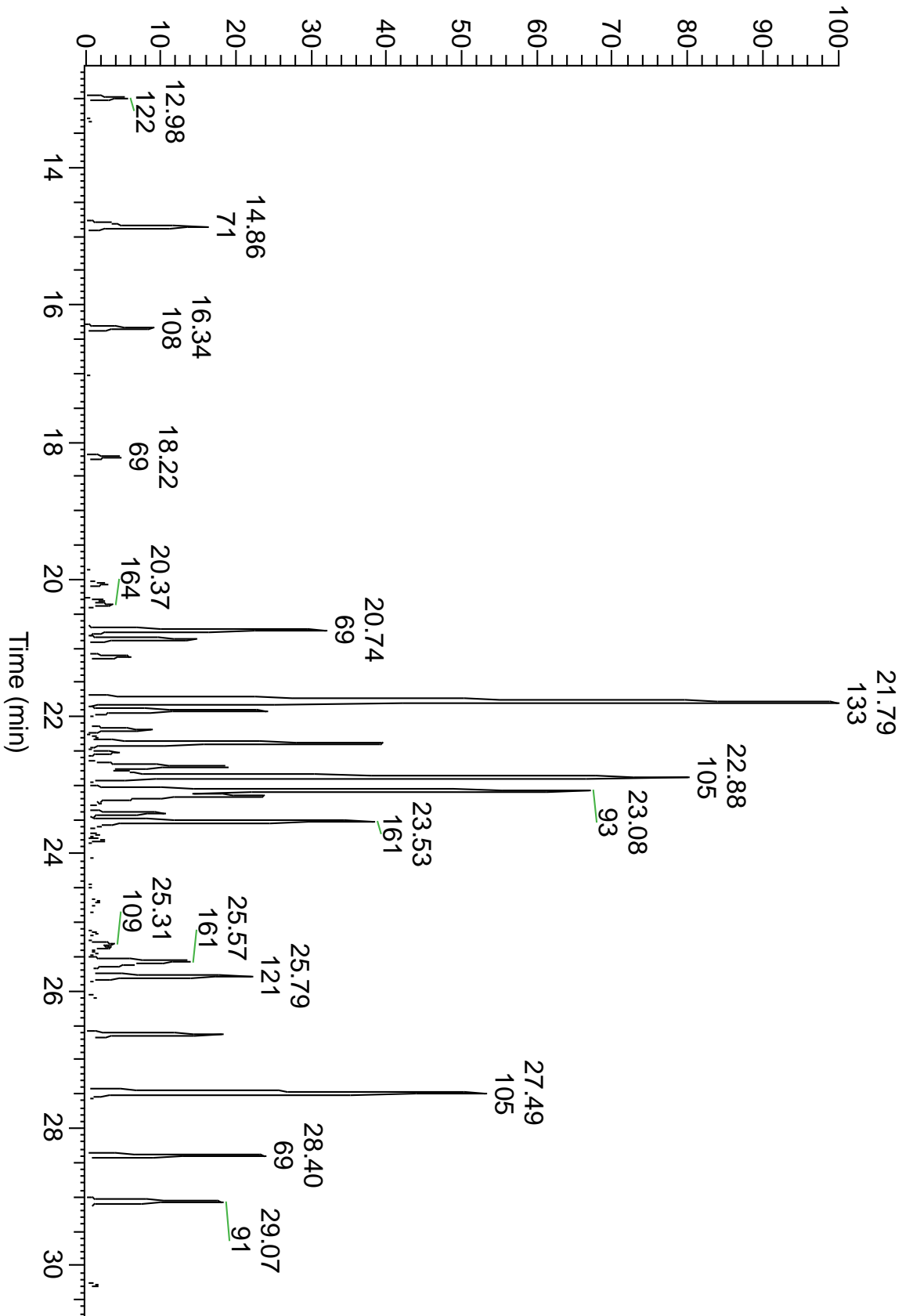
Monoterpenes	Sesquiterpenes	Monoterpenols	Sesquiterpenols	Ketones
0.15%	64.23%	2.92%	9.65%	0.00%
Esters	Ethers	Aldehydes	Phenols	Other
20.83%	0.77%	0.00%	0.55%	0.52%







RT: 12.50 - 30.82





Total Percentage	99.62%				
Peak Number	RT	Area %	Compound Name	RI	Chemical Family
1	10.75	0.08%	alpha-Pinene	936.10	Monoterpenes
2	12.22	0.07%	Myrcene	989.20	Monoterpenes
3	12.98	0.69%	p-Cresyl methyl ether	1019.50	Ethers
4	13.31	0.13%	Benzyl alcohol	1036.90	Phenols
5	14.86	2.34%	Linalool	1099.00	Monoterpenols
6	14.86	Co-Eluting	Methyl benzoate	1094.20	Esters
7	16.34	1.09%	Benzyl acetate	1163.00	Esters
8	17.00	0.07%	Methyl salicylate	1192.29	Esters
9	17.13	0.08%	Methyl chavicol	1202.00	Ethers
10	18.22	0.58%	Geraniol	1258.29	Monoterpenols
11	20.07	0.45%	delta-Elemene	1335.83	Sesquiterpenes
12	20.31	0.26%	alpha-Cubebene	1355.71	Sesquiterpenes
13	20.37	0.42%	Eugenol	1365.89	Phenols
14	20.74	3.92%	Geranyl acetate	1384.71	Esters
15	20.87	1.80%	beta-Cubebene	1390.50	Sesquiterpenes
16	21.13	0.79%	beta-Elemene	1388.30	Sesquiterpenes
17	21.79	19.30%	beta-Caryophyllene	1427.14	Sesquiterpenes
18	21.91	2.99%	(E)-Cinnamyl acetate	1443.00	Esters
19	22.19	1.10%	beta-Copaene	1445.00	Sesquiterpenes
20	22.29	0.15%	cis-Muurolo-3,5-diene	1453.00	Sesquiterpenes
21	22.39	5.39%	alpha-Humulene	1461.43	Sesquiterpenes
22	22.53	0.55%	allo-Aromadendrene	1471.00	Sesquiterpenes
23	22.73	2.82%	gamma-Muuroloene	1478.86	Sesquiterpenes
24	22.81	0.52%	UK Sesquiterpene	#N/A	#N/A
25	22.88	11.65%	Germacrene D	1484.71	Sesquiterpenes
26	23.08	9.01%	(Z,E)-alpha-Farnesene	1500.50	Sesquiterpenes
27	23.15	3.92%	(E,E)-alpha-Farnesene	1508.14	Sesquiterpenes
28	23.27	0.21%	beta-Bisabolene	1509.86	Sesquiterpenes
29	23.41	1.26%	gamma-Cadinene	1515.29	Sesquiterpenes
30	23.53	5.01%	delta-Cadinene	1524.14	Sesquiterpenes
31	23.72	0.15%	trans-Calamenene	1531.60	Sesquiterpenes
32	23.80	0.27%	trans-Cadina-1,4-diene	1532.71	Sesquiterpenes
33	23.96	0.14%	alpha-Cadinene	1537.86	Sesquiterpenes
34	24.04	0.08%	(E)-Nerolidol	1542.25	Sesquiterpenols
35	24.69	0.31%	Globulol	1589.71	Sesquiterpenols
36	24.77	0.12%	Isoeugenyl acetate	1610.00	Esters
37	24.82	0.08%	1,10-diepi-Cubenol	1612.29	Sesquiterpenols
38	25.16	0.26%	1-epi-Cubenol	1628.00	Sesquiterpenols
39	25.31	0.41%	T-Cadinol	1640.43	Sesquiterpenols
40	25.36	0.35%	Cubenol	1642.14	Sesquiterpenols
41	25.45	0.16%	T-Muurolol	1643.29	Sesquiterpenols
42	25.57	2.74%	alpha-Muurolol	1649.33	Sesquiterpenols

